

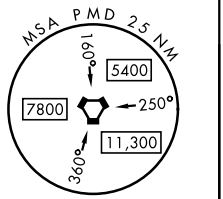
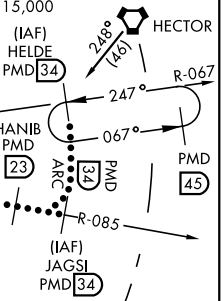
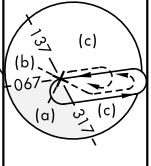
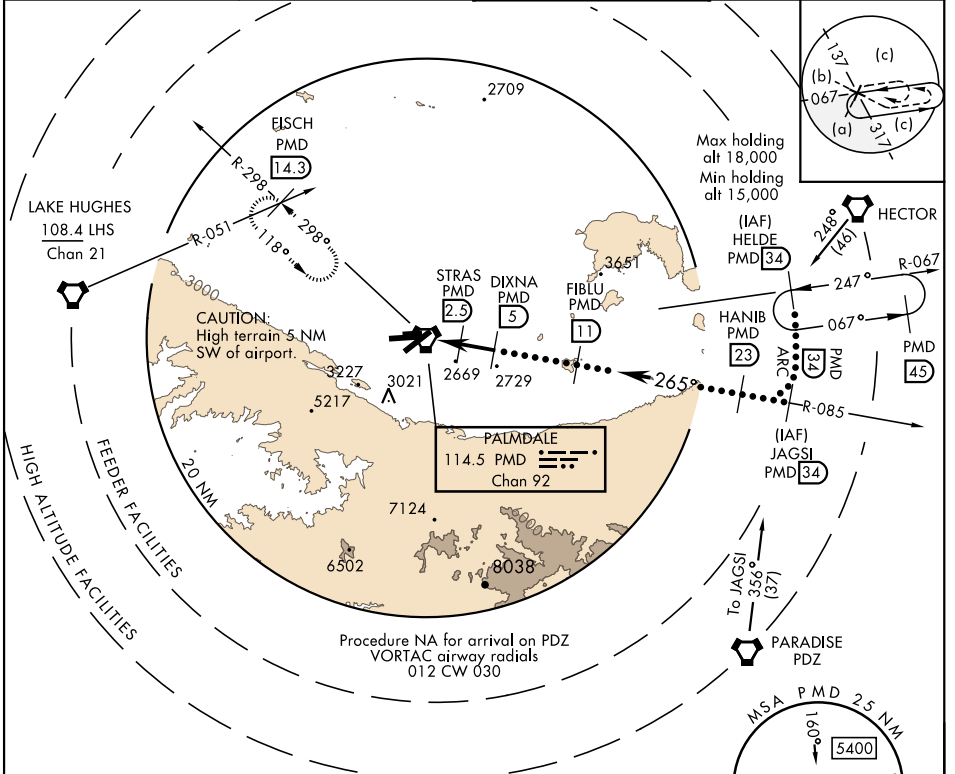
TACAN PMD Chan 92	APCH CRS 265°	Rwy Idg 12,002 TDZE 2503 Arprt Elev 2543
-----------------------------	-------------------------	---

JAL-310 [USAF]

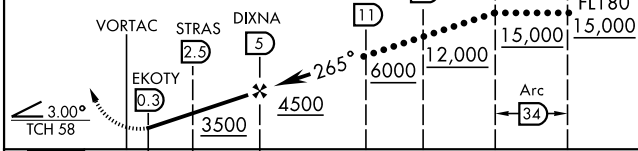
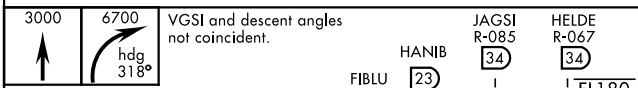
PALMDALE USAF PLANT 42 (KPMD)

▽ * Circling NA S of Rwy 4 and 25.
▲ MISSED APPROACH: Climb to 3000 then climbing right turn to 6700 on heading 318° on PMD VORTAC R-298 to FISCH INT/PMD 14.3 DME/RADAR and hold, continue climb-in-hold to 6700.

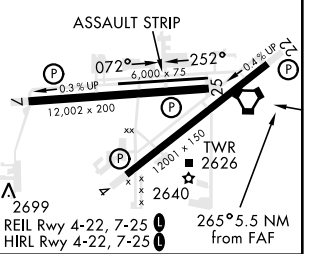
ATIS 118.275	JOSHUA APP CON 124.55 363.0	PALMDALE TOWER * 123.7 (CTAF) 0 317.6	GND CON 121.9 348.6
------------------------	---------------------------------------	---	-------------------------------



EMERG SAFE ALT 100 NM 14,400



ELEV 2543	TDZE 2503
-----------	-----------



CATEGORY	C	D	E
S-25	2840-1	337 (400-1)	
CIRCLING*	3140-1½ 597 (600-1½)	3740-3 1197 (1200-3)	3760-3 1217 (1300-3)

SW-3, 28 JAN 2021 to 25 FEB 2021

SW-3, 28 JAN 2021 to 25 FEB 2021