

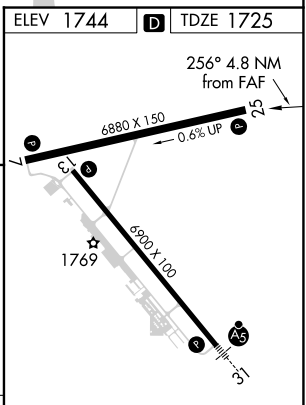
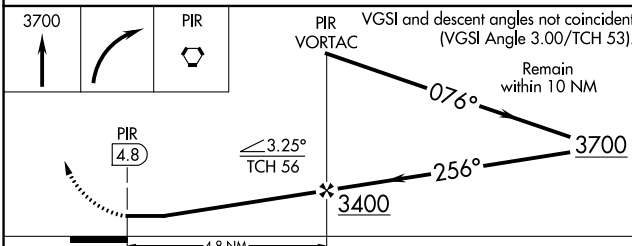
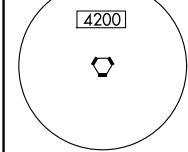
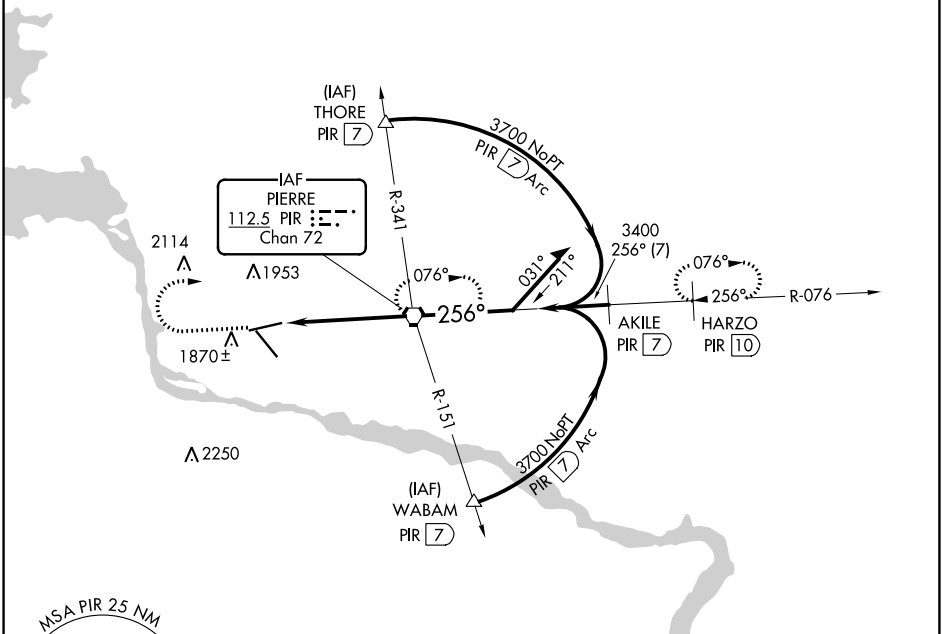
VORTAC PIR 112.5 Chan 72	APP CRS 256°	Rwy ldg TDZE Apt Elev 6880 1725 1744
---------------------------------------	------------------------	--

VOR or TACAN RWY 25

PIERRE RGNL (PIR)

MISSED APPROACH: Climb to 3700 then right turn direct PIR VORTAC and hold. (TACAN aircraft continue via PIR R-076 to HARZO 10 DME and hold east, right turns, 256° inbound)

ASOS 119.025	MINNEAPOLIS CENTER 125.1 269.1	CTAF 122.7	UNICOM 122.95
------------------------	--	----------------------	-------------------------



CATEGORY	A	B	C	D
S-25	2120-1	395 (400-1)		2120-1½ 395 (400-1½)
C CIRCLING	2240-1 496 (500-1)	2300-1 556 (600-1)	2400-1¾ 656 (700-1¾)	2460-2¼ 716 (800-2¼)

ELEV 1744	D TDZE 1725
REIL Rwy 7, 13, and 25	
HIRL Rwy 7-25 and 13-31	
FAF to MAP 4.8 NM	
Knots	60 90 120 150 180
Min:Sec	4:48 3:12 2:24 1:55 1:36

NC-1, 25 FEB 2021 to 25 MAR 2021

NC-1, 25 FEB 2021 to 25 MAR 2021