

LOC/DME I-PIH 110.3 Chan 40	APP CRS 211°	Rwy Idg TDZE 9059 4452	Apt Elev 4452
--	------------------------	--	-------------------------

ILS or LOC RWY 21

POCATELLO RGNL (PIH)

⚠ Circling NA southeast of Rwy 3-21. For inoperative MALSR, increase S-ILS-21 Cat E visibility to RVR 4000, and S-LOC-21 Cat E visibility to RVR 5000.
RVR 1800 authorized with the use of FD or AP or HUD to DA.

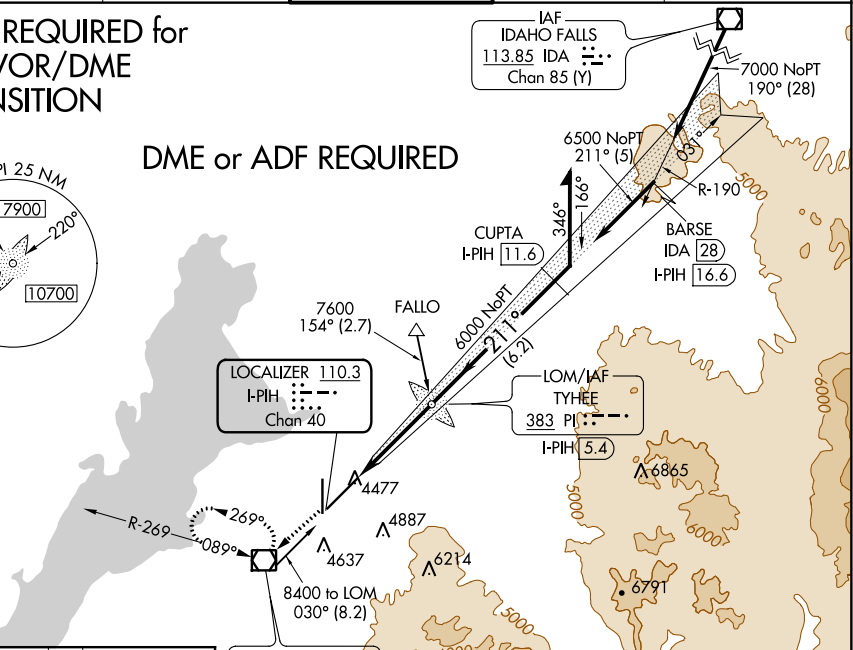
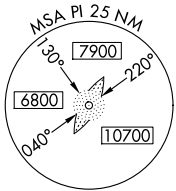


MISSED APPROACH: Climb to 7400 direct PIH VOR/DME, continue climb via PIH VOR/DME R-269, then right turn direct PIH VOR/DME and hold.

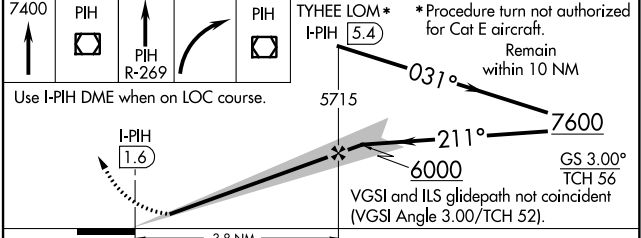
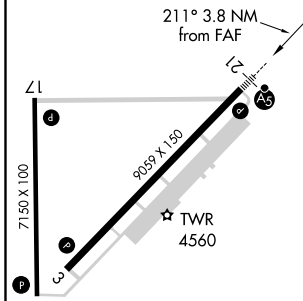
ATIS 135.625	SALT LAKE CENTER 128.35 239.25	POCATELLO TOWER * 119.1 (CTAF) 257.8	GND CON 121.9	UNICOM 122.95
------------------------	--	---	-------------------------	-------------------------

DME REQUIRED for IDA VOR/DME TRANSITION

DME or ADF REQUIRED



ELEV 4452	D	TDZE 4452
------------------	----------	------------------



FAF to MAP 3.8 NM					
Knots	60	90	120	150	180
Min:Sec	3:48	2:32	1:54	1:31	1:16
CATEGORY	A	B	C	D	E
S-ILS 21 #	4652/24 200 (200-½)				
S-LOC 21	4740/24 288 (300-½)			4740/40 288 (300-¾)	
CIRCLING	4820-1 368 (400-1)	4920-1 468 (500-1)	4920-1½ 468 (500-1½)	5020-2	568 (600-2)

NW-1, 09 SEP 2021 to 07 OCT 2021

NW-1, 09 SEP 2021 to 07 OCT 2021