

# FOOXX FOUR ARRIVAL (RNAV)

TAMPA, FLORIDA

TAMPA APP CON  
 132.52 269.1  
 TAMPA INTL D-ATIS ARR  
 126.45  
 ST. PETE-CLEARWATER INTL ATIS  
 134.5  
 MACDILL AFB ATIS  
 133.825 270.1  
 TAMPA EXECUTIVE AWOS-3  
 121.125

## ARRIVAL DESCRIPTION

### SEMINOLE TRANSITION (SZW.FOOXX4):

From TABIR on track 156° to DIPAY.

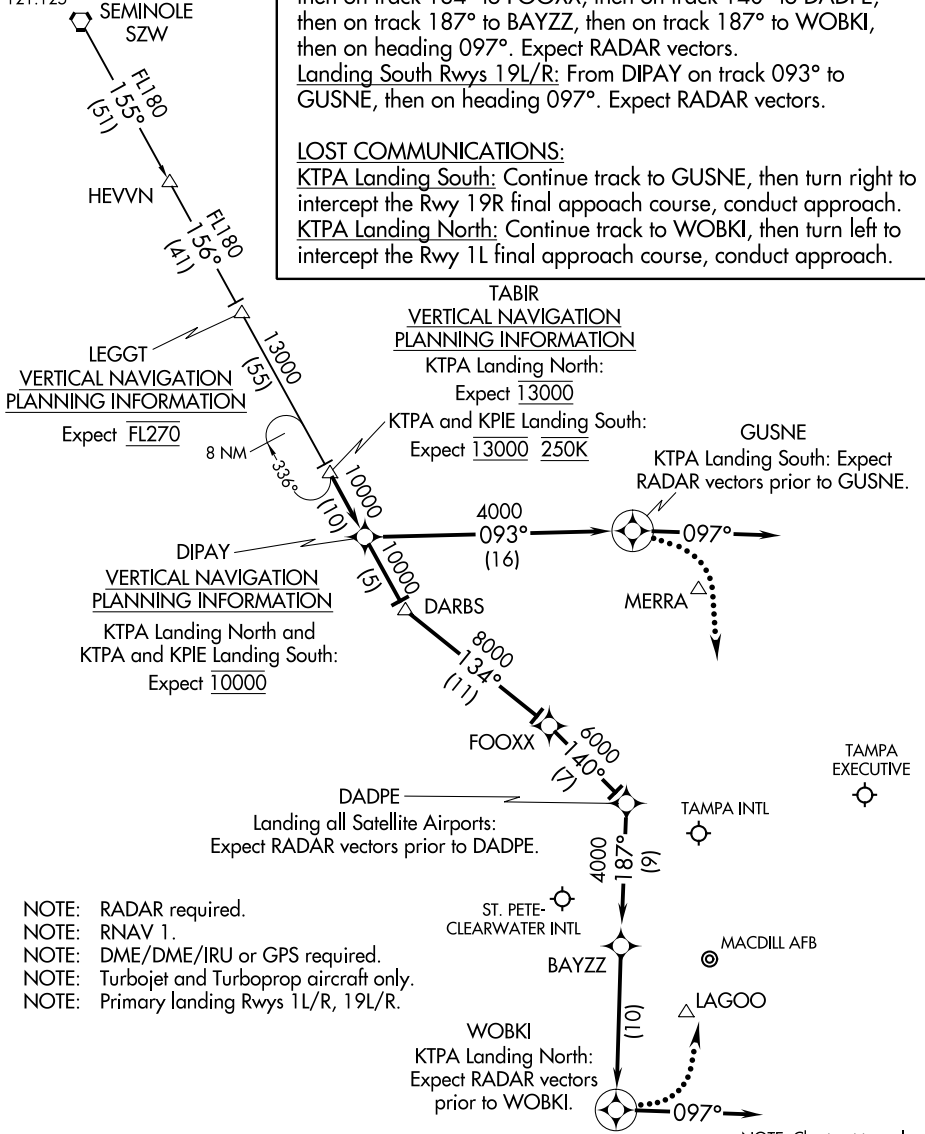
Landing North Rwy 1L/R: From DIPAY on track 156° to DARBS, then on track 134° to FOOXX, then on track 140° to DADPE, then on track 187° to BAYZZ, then on track 187° to WOBKI, then on heading 097°. Expect RADAR vectors.

Landing South Rwy 19L/R: From DIPAY on track 093° to GUSNE, then on heading 097°. Expect RADAR vectors.

### LOST COMMUNICATIONS:

KTPA Landing South: Continue track to GUSNE, then turn right to intercept the Rwy 19R final approach course, conduct approach.

KTPA Landing North: Continue track to WOBKI, then turn left to intercept the Rwy 1L final approach course, conduct approach.



SE-3, 01 FEB 2018 to 01 MAR 2018

SE-3, 01 FEB 2018 to 01 MAR 2018

- NOTE: RADAR required.
- NOTE: RNAV 1.
- NOTE: DME/DME/IRU or GPS required.
- NOTE: Turbojet and Turboprop aircraft only.
- NOTE: Primary landing Rwy 1L/R, 19L/R.

# FOOXX FOUR ARRIVAL (RNAV)

TAMPA, FLORIDA