

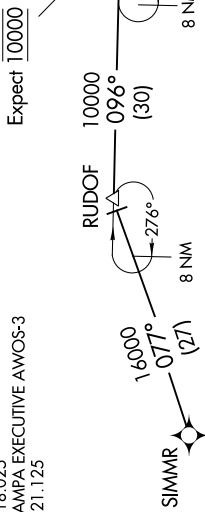
BLOND FOUR ARRIVAL (RNAV)

TAMPA, FLORIDA

SE-3, 29 MAR 2018 to 26 APR 2018

- TAMPA APP CON 118.8 269.1
- TAMPA INTL D-ATIS ARR 126.45
- ST. PETE-CLEARWATER INTL ATIS 134.5
- SARASOTA/BRADENTON INTL ATIS 124.375
- MACDILL AFB ATIS 133.825 270.1
- LAKELAND UNDER RGNL ATIS 118.025
- TAMPA EXECUTIVE AWOS-3 121.125

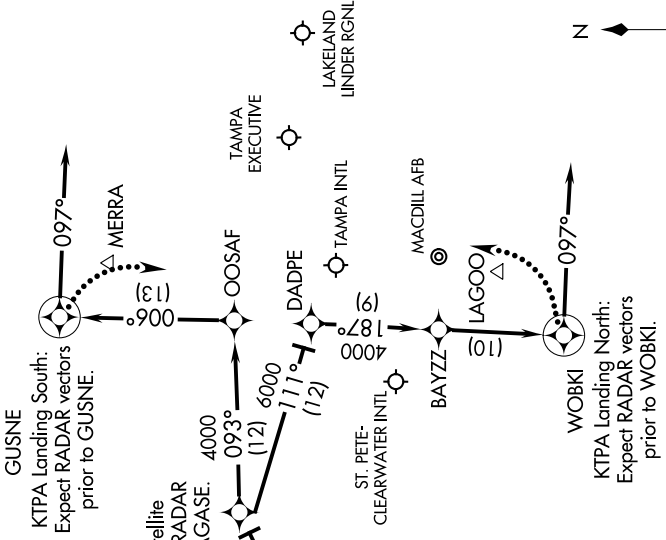
BLOND VERTICAL NAVIGATION PLANNING INFORMATION



Expect 10000

AGASE Landing all Satellite Airports: Expect RADAR vectors prior to AGASE.

GUSNE KTPA Landing South: Expect RADAR vectors prior to GUSNE.



MERRA

LAKELAND UNDER RGNL

TAMPA EXECUTIVE

OOSAF

DADPE

TAMPA INTL

BAYZZ

MACDILL AFB

WOBKI

SARASOTA/BRADENTON INTL

NOTE: Chart not to scale.

SIMMR TRANSITION (SIMMR.BLOND4):

From BLOND on track 068° to AGASE. Thence via assigned runway transition.
 Landing North Rwy 1L/R: From over AGASE on track 111° to DADPE, then on track 187° to BAYZZ, then on track 187° to WOBKI, then on heading 097°. Expect RADAR vectors.
 Landing South Rwy 19L/R: From over AGASE on track 093° to OOSAF, then on track 006° to GUSNE, then right turn on heading 097°. Expect RADAR vectors.

LOST COMMUNICATIONS:

KTPA Landing South: Continue track to GUSNE, then turn right to intercept the Rwy 19R final approach course, conduct approach.
 KTPA Landing North: Continue track to WOBKI, then turn left to intercept the Rwy 1L final approach course, conduct approach.

- NOTE: RADAR required.
- NOTE: RNAV 1.
- NOTE: DME/DME/IRU or GPS required.
- NOTE: Turbojet and Turboprop aircraft only.
- NOTE: Primary landing Rwy 1L/R, 19L/R.
- NOTE: For non-GPS equipped aircraft: GUSNE transition: SRQ, PIE must be operational; WOBKI transition: SRQ, LAL, ORL, and PIE must be operational.

BLOND FOUR ARRIVAL (RNAV)

(BLOND.BLOND4) 06FEB14

TAMPA, FLORIDA

SE-3, 29 MAR 2018 to 26 APR 2018