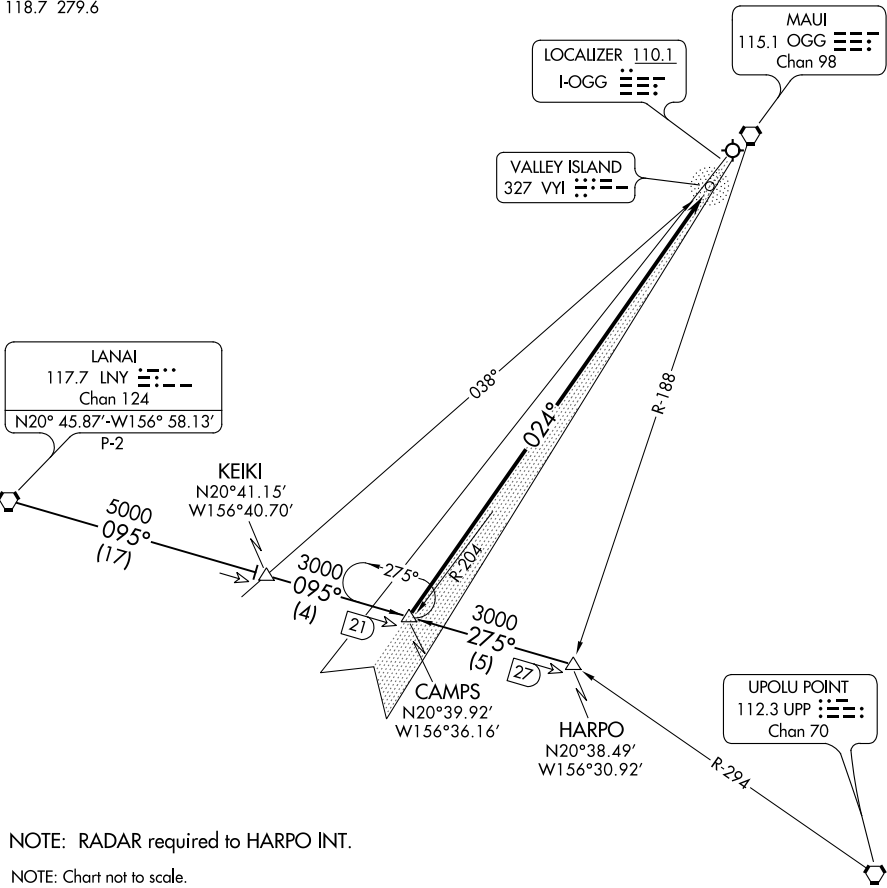


ATIS  
128.6  
HCF CENTER  
119.5 225.4  
MAUI TOWER★  
118.7 279.6



NOTE: RADAR required to HARPO INT.

NOTE: Chart not to scale.

### ARRIVAL ROUTE DESCRIPTION

HARPO TRANSITION (HARPO.CAMPS3): From over HARPO INT via LNY R-095 to CAMPS INT. Thence . . . .

LANAI TRANSITION (LNY.CAMPS3): From over LNY VORTAC via KEIKI INT and LNY R-095 to CAMPS INT. Thence . . . .

. . . . From over CAMPS INT on I-OGG localizer course to Kahului Airport.

#### LOST COMMUNICATIONS:

At CAMPS INT, proceed with the ILS RWY 2 approach.

PAC, 05 DEC 2019 to 30 JAN 2020

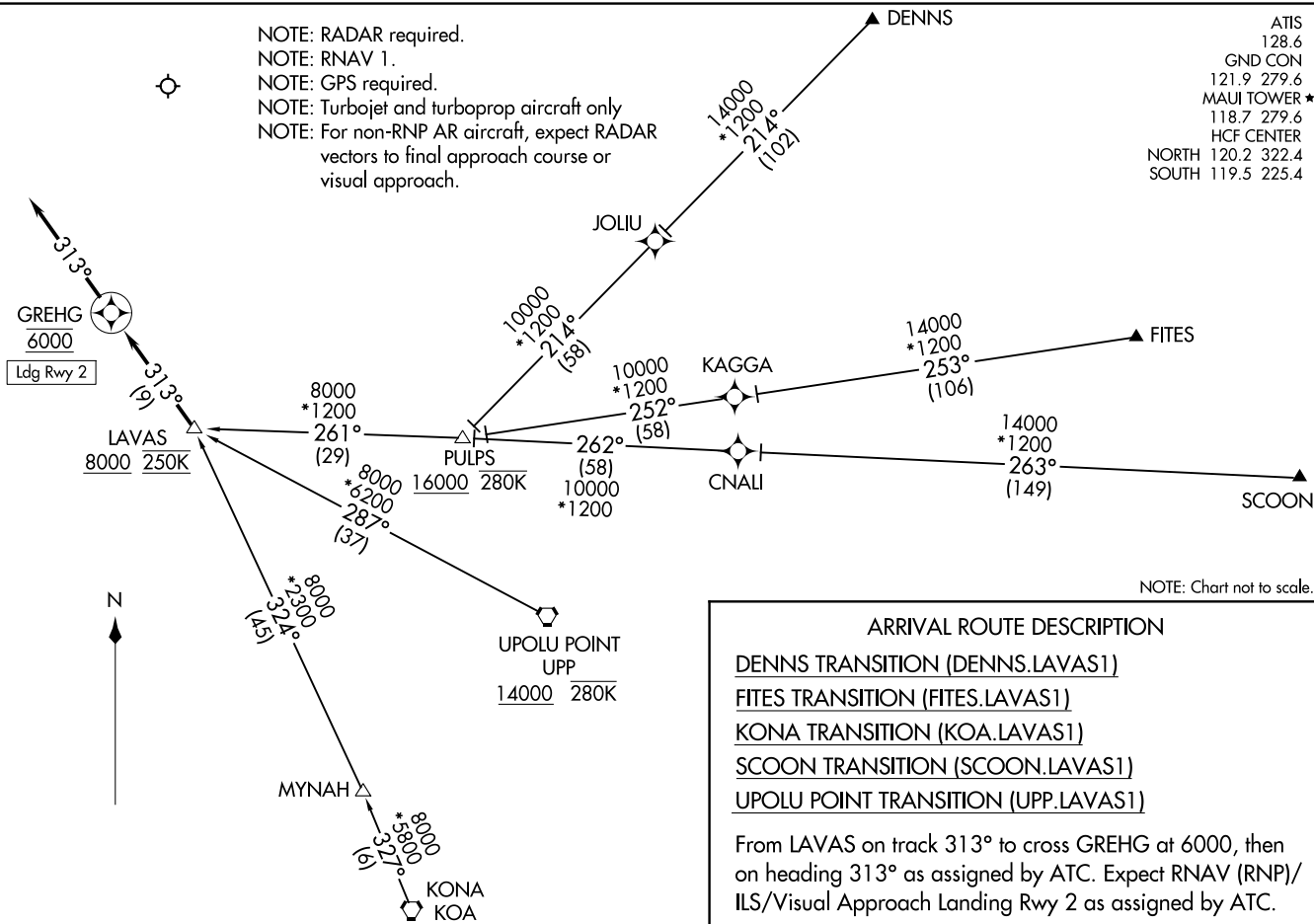
PAC, 05 DEC 2019 to 30 JAN 2020

LAVAS ONE ARRIVAL (RNAV)  
(LAVAS.LAVAS1) 20JUN19

KAHULUI HAWAII  
(OGG) (PHOG)  
(OGG) (PHOG)

NOTE: RADAR required.  
NOTE: RNAV 1.  
NOTE: GPS required.  
NOTE: Turbojet and turboprop aircraft only  
NOTE: For non-RNP AR aircraft, expect RADAR vectors to final approach course or visual approach.

ATIS 128.6  
GND CON 121.9 279.6  
MAUI TOWER \* 118.7 279.6  
HCF CENTER 120.2 322.4  
SOUTH 119.5 225.4



NOTE: Chart not to scale.

**ARRIVAL ROUTE DESCRIPTION**

DENNS TRANSITION (DENNS.LAVAS1)

FITES TRANSITION (FITES.LAVAS1)

KONA TRANSITION (KOA.LAVAS1)

SCOON TRANSITION (SCOON.LAVAS1)

UPOLU POINT TRANSITION (UPP.LAVAS1)

From LAVAS on track 313° to cross GREHG at 6000, then on heading 313° as assigned by ATC. Expect RNAV (RNP)/ILS/Visual Approach Landing Rwy 2 as assigned by ATC.

(LAVAS.LAVAS1) 19171  
LAVAS ONE ARRIVAL (RNAV)

AL-762 (FAA)

KAHULUI (OGG) (PHOG)  
KAHULUI HAWAII

(LNDHY.LNDHY1) 19171

# LNDHY ONE ARRIVAL (RNAV)

AL-762 (FAA)

KAHULUI (OGG) (PHOG)

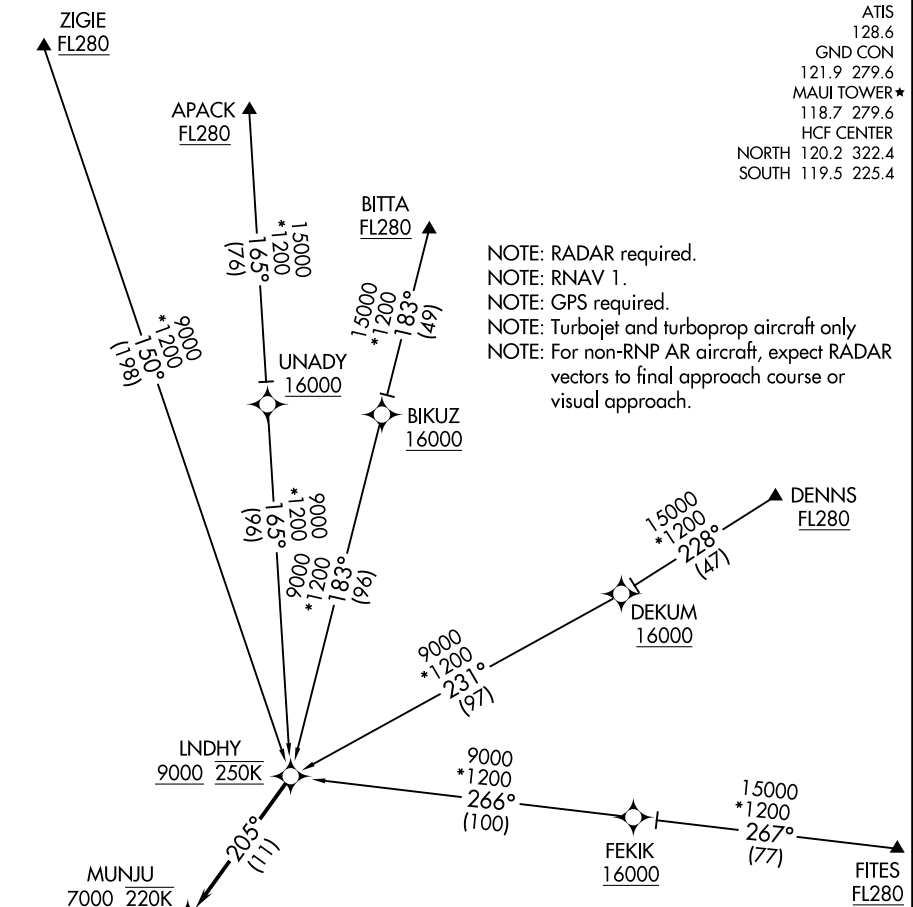
KAHULUI, HAWAII

ATIS 128.6  
 GND CON 121.9 279.6  
 MAUI TOWER\* 118.7 279.6  
 HCF CENTER  
 NORTH 120.2 322.4  
 SOUTH 119.5 225.4

NOTE: RADAR required.  
 NOTE: RNAV 1.  
 NOTE: GPS required.  
 NOTE: Turbojet and turboprop aircraft only  
 NOTE: For non-RNP AR aircraft, expect RADAR vectors to final approach course or visual approach.

PAC: 05 DEC 2019 to 30 JAN 2020

PAC: 05 DEC 2019 to 30 JAN 2020



## ARRIVAL ROUTE DESCRIPTION

- APACK TRANSITION (APACK.LNDHY1)
- BITTA TRANSITION (BITTA.LNDHY1)
- DENNS TRANSITION (DENNS.LNDHY1)
- FITES TRANSITION (FITES.LNDHY1)
- ZIGIE TRANSITION (ZIGIE.LNDHY1)

From LNDHY on track 205° to cross MUNJU at or above 7000 and at 220K, then on track 204° to cross HOMAI at 5000 and at 210K, then on track 204°. Expect RNAV (RNP)/ILS/Visual Approach Landing Rwy 2, as assigned by ATC.

NOTE: Chart not to scale.

# LNDHY ONE ARRIVAL (RNAV)

(LNDHY.LNDHY1) 20JUN19

KAHULUI, HAWAII  
KAHULUI (OGG) (PHOG)