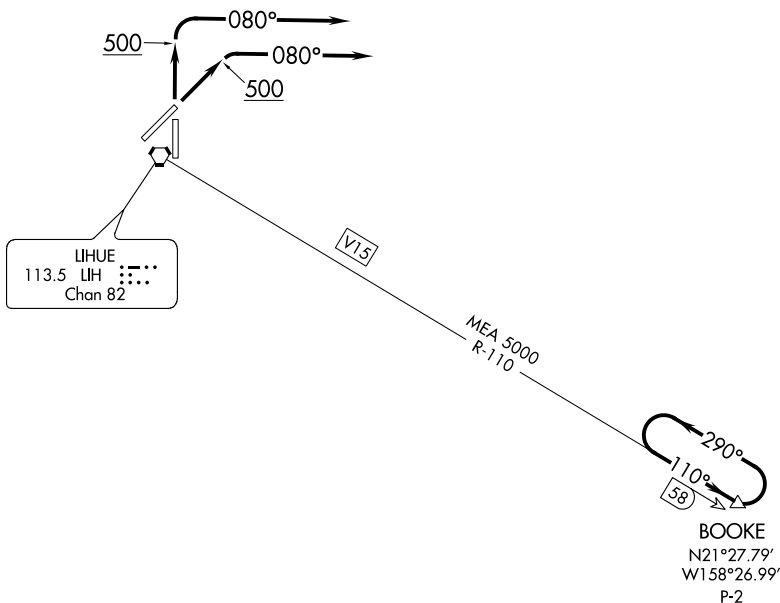


ATIS
127.2
GND CON
121.9
LIHUE TOWER ★
118.9 (CTAF) 263.1
HCF CENTER
126.5 269.4



PAC, 15 AUG 2019 to 10 OCT 2019

PAC, 15 AUG 2019 to 10 OCT 2019

NOTE: DME required.

NOTE: Chart not to scale.

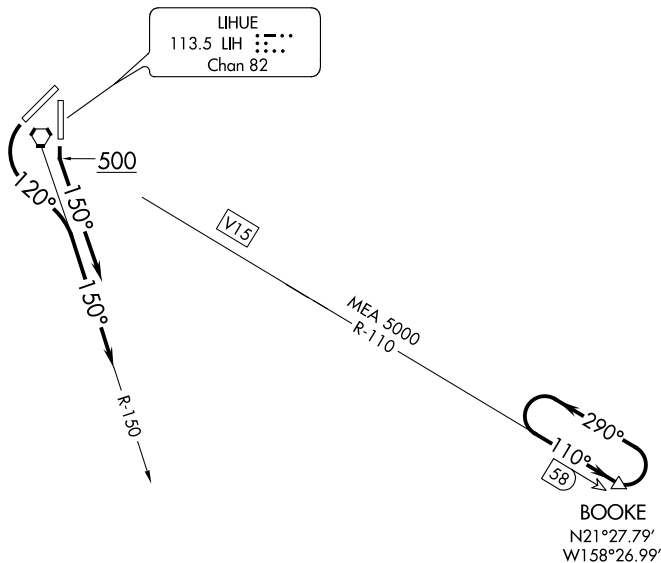


DEPARTURE ROUTE DESCRIPTION

TAKEOFF RUNWAYS 3 and 35: Climb runway heading to 500, then climbing right turn to heading 080, expect radar vectors to intercept LIH R-110 to BOOKE DME fix. MEA 5000.

LOST COMMUNICATIONS: If not in contact with Honolulu CERAP one minute after departure, maintain SID heading until 10 NM east of LIH VORTAC, then intercept LIH R-110 to BOOKE DME fix. MEA 5000.

ATIS
127.2
GND CON
121.9
121.9
LIHUE TOWER★
118.9 (CTAF) 263.1
HCF CENTER
126.5 269.4



LIHUE
113.5 LIH
Chan 82

BOOKE
N21°27.79'
W158°26.99'

PAC, 15 AUG 2019 to 10 OCT 2019

PAC, 15 AUG 2019 to 10 OCT 2019

NOTE: DME required.
NOTE: Terrain heights to 2297' occur within 4.5 NM southwest of the airport.
NOTE: Chart not to scale.



DEPARTURE ROUTE DESCRIPTION

TAKEOFF RUNWAY 17: Climb runway heading to 500 feet , then climbing left turn to heading 150°, expect RADAR vectors to intercept LIH R-110 to BOOKE DME fix. MEA 5000.

TAKEOFF RUNWAY 21: Immediate climbing left turn to heading 120° until crossing LIH R-150, thence fly heading 150°, expect RADAR vectors to intercept LIH R-110 to BOOKE DME fix. MEA 5000.

LOST COMMUNICATIONS: If not in contact with Honolulu CERAP one minute after departure, maintain SID heading until 10 NM southeast of LIH VORTAC, then intercept LIH R-110 to BOOKE DME fix. MEA 5000.