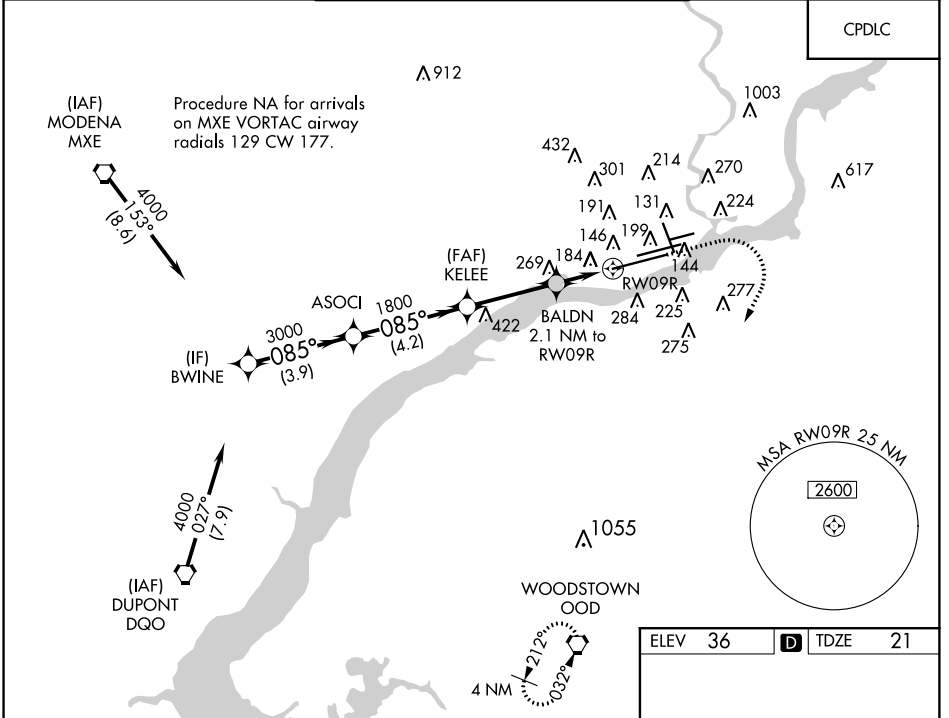


WAAS CH 40023 W09A	APP CRS 085°	Rwy Idg TDZE 21 Apt Elev 36	10506
---------------------------------	------------------------	---	--------------

RNAV (GPS) Y RWY 9R

PHILADELPHIA INTL (PHL)

<p>▼ For uncompensated Baro-VNAV systems, LNAV/VNAV NA below -12°C (11°F) or above 54°C (130°F). DME/DME RNP-0.3 NA. ▲ For inop ALS, increase LNAV/VNAV visibility all Cats to RVR 5000 and LNAV Cats C/D visibility to RVR 6000.</p>	<p>ALSF-2</p>	<p>MISSED APPROACH: Climb to 1500 then climbing right turn to 3000 direct OOD VORTAC and hold.</p>		
<p>D-ATIS ARR 133.4 DEP 135.925</p>	<p>PHILADELPHIA APP CON 124.35 319.15</p>	<p>PHILADELPHIA TOWER 118.5 327.05 (Rwys 9L/27R, 8/26 and 17/35) 135.1 327.05 (Rwy 9R/27L)</p>	<p>GND CON 121.9 348.6</p>	<p>CLNC DEL 118.85 348.6</p>



	BWINE	ASOCI	KELEE	BALDN 2.1 NM to RWY 9R	OOD
	4000	3000	1800	*740	1500 3000 OOD
	GP 3.00° TCH 58				
	3.9 NM	4.2 NM	3.3 NM	1 NM	1.1 NM
CATEGORY	A	B	C	D	
LPV DA		221/24	200 (200-½)		
LNAV/VNAV DA		346/30	325 (400-¾)		
LNAV MDA	440/24	419 (500-½)	440/40	419 (500-¾)	
CIRCLING	540-1 504 (600-1)	640-1 604 (700-1)	640-1¾ 604 (700-1¾)	720-2¼ 684 (700-2¼)	

ELEV 36	D TDZE 21
---------	------------------

REIL Rwys 9L and 35
TDZ/CL Rwy 9R
HIRL all Rwys

NE-4, 04 JAN 2018 to 01 FEB 2018

NE-4, 04 JAN 2018 to 01 FEB 2018