


WAAS CH 90122	APP CRS 268°	Rwy Idg TDZE 11	8864
W27B		Apt Elev 36	

RNAV (GPS) RWY 27R

PHILADELPHIA INTL (PHL)

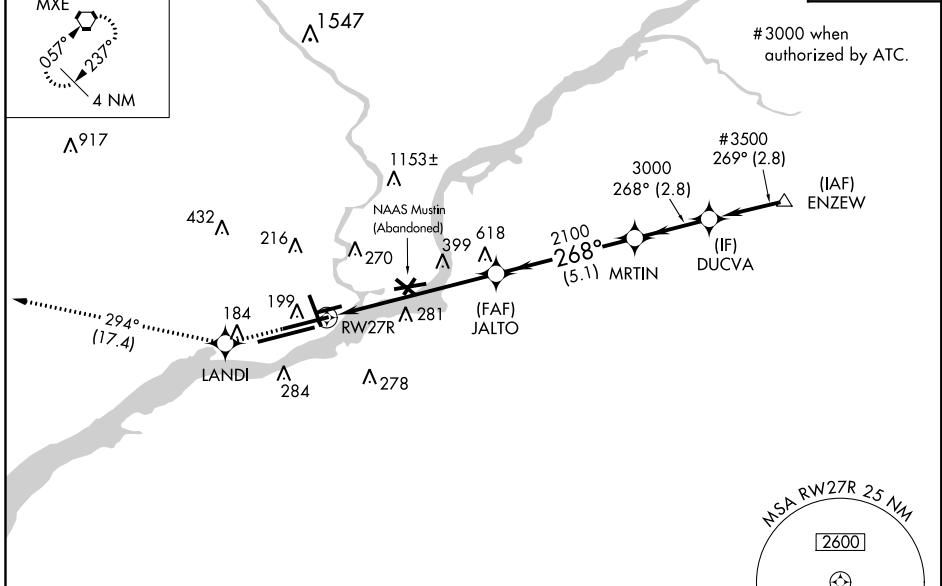
▼ For uncompensated Baro-VNAV systems, LNAV/VNAV NA below -12°C (11°F) or above 54°C (130°F). DME/DME RNP-0.3 NA. For inop ALS, increase LNAV/VNAV all Cats visibility to 1 3/8 SM and LNAV Cat C/D to 2 SM.

▲ MALSR  MISSED APPROACH: Climb to 3000 direct LANDI and on track 294° to MXE VORTAC and hold.

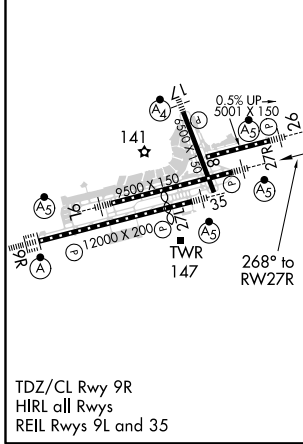
D-ATIS ARR 133.4 DEP 135.925	PHILADELPHIA APP CON 124.35 319.15	PHILADELPHIA TOWER 118.5 327.05 (Rwys 9L/27R, 8/26 and 17/35) 135.1 327.05 (Rwy 9R/27L)	GND CON 121.9 348.6	CLNC DEL 118.85 348.6
--	--	---	-------------------------------	---------------------------------

MISSED APCH FIX MODENA MXE  4 NM


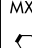
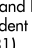
CPDLC

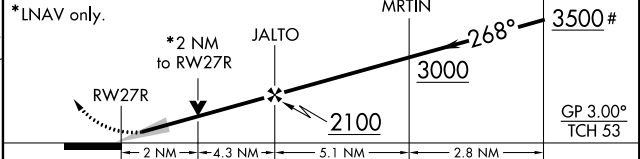


ELEV 36	D	TDZE 11
---------	----------	---------



PHILADELPHIA, PENNSYLVANIA
Amdt 1C 01FEB18

3000  LANDI  MSE  VGS and RNAV glidepath not coincident (VGS Angle 3.00°/TCH 81). # 3000 when authorized by ATC.



CATEGORY	A	B	C	D
LPV DA		267/24	256 (300-1/2)	
LNAV/VNAV DA		520/60	509 (500-1 1/4)	
LNAV MDA	720/24	709 (700-1/2)	720-1 1/2 709 (700-1 1/2)	720-1 3/4 709 (700-1 3/4)
CIRCLING	720-1	684 (700-1)	720-2 684 (700-2)	720-2 1/4 684 (700-2 1/4)

PHILADELPHIA INTL (PHL) RNAV (GPS) RWY 27R

NE-4, 10 OCT 2019 to 07 NOV 2019

NE-4, 10 OCT 2019 to 07 NOV 2019