

WAAS CH 78412 W25A	APP CRS 254°	Rwy Idg TDZE 1487 Apt Elev 1497	6300
--	------------------------	---	-------------

RNAV (GPS) RWY 25

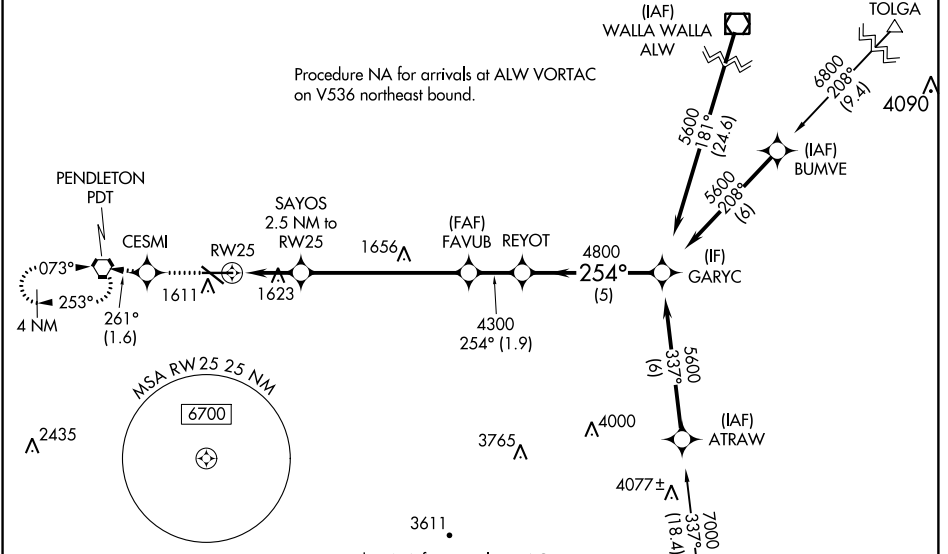
EASTERN OREGON RGNL AT PENDLETON (PDT)

⚠ For uncompensated Baro-VNAV systems, LNAV/VNAV NA below -17°C (2°F) or above 54°C (130°F). Baro-VNAV and VDP NA when using Walla Walla altimeter setting. DME/DME RNP-0.3 NA. When local altimeter setting not received, use Walla Walla altimeter setting and increase all DA/MDA 120 feet, increase all LPV visibilities to RVR 3000, all LNAV/VNAV visibilities to RVR 5000, LNAV Cat C/D visibilities to RVR 5500, and Circling Cat C/D visibilities ½ SM. For inop ALS, increase LNAV Cat C/D visibilities to RVR 6000. For inop ALS when using Walla Walla altimeter setting, increase LNAV/VNAV all Cats and LNAV Cat C/D visibility to 1½ SM. # RVR 1800 authorized with use of FD or AP or HUD to DA.

MALS

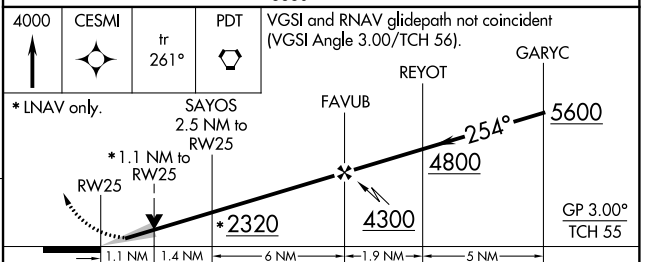
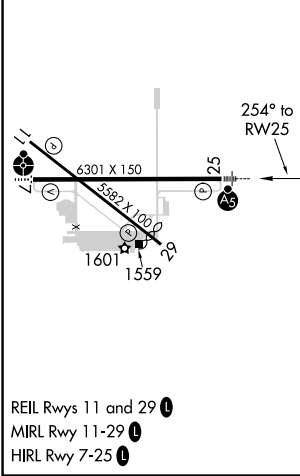
MISSED APPROACH:
Climb to 4000 direct CESMI and on track 261° to PDT VORTAC and hold, continue climb-in-hold to 4000.

ASOS 118.325	CHINOOK APP CON* 133.15 379.15	PENDLETON TOWER* 119.7 (CTAF) 0 257.8	GND CON 121.9 257.8	UNICOM 122.95
------------------------	--	---	-------------------------------	-------------------------



ELEV 1497	D	TDZE 1487
------------------	----------	------------------

Procedure NA for arrivals at LACED on V4 southeast bound.



CATEGORY	A	B	C	D
LPV DA #		1687/24	200 (200-½)	
LNAV/VNAV DA		1800/24	313 (400-½)	
LNAV MDA	1880/24	393 (400-½)	1880/40	393 (400-¾)
C CIRCLING	1920-1 423 (500-1)	1960-1 463 (500-1)	1980-1½ 483 (500-1½)	2200-2¼ 703 (800-2¼)

NW-1, 04 JAN 2018 to 01 FEB 2018

NW-1, 04 JAN 2018 to 01 FEB 2018