

WAAS CH <b>72841</b> <b>W21A</b>	APP CRS <b>200°</b>	Rwy Idg TDZE Apt Elev	<b>4400</b> <b>18</b> <b>18</b>
--	------------------------	-----------------------------	---------------------------------------

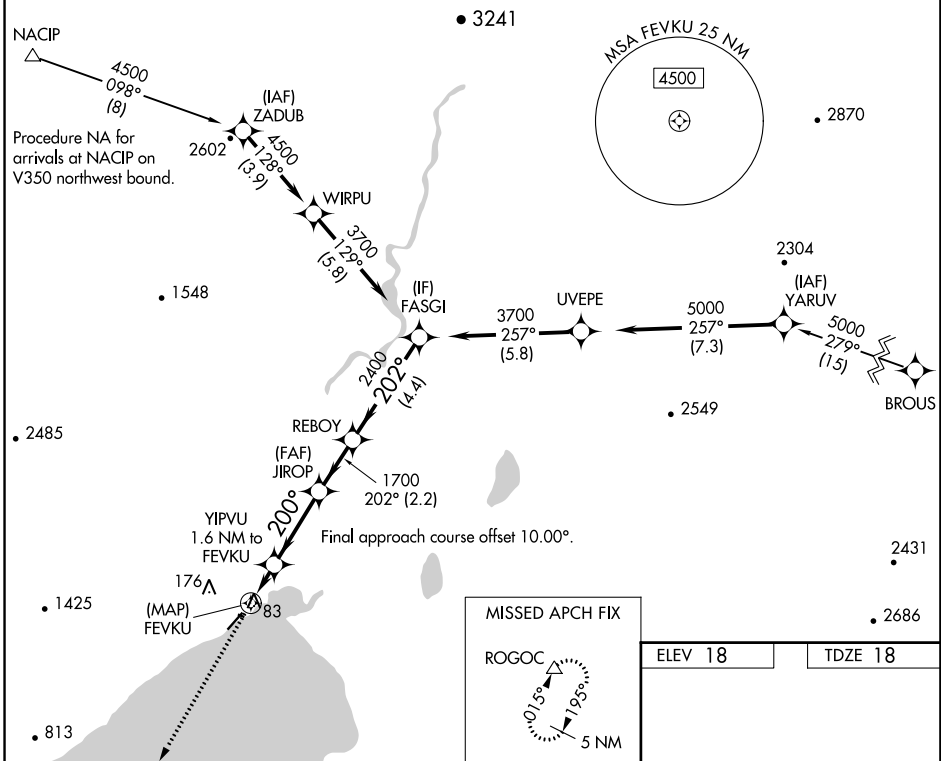
# RNAV (GPS) RWY 21

TOGIAK (TOG)(PATG)

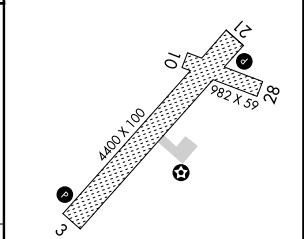
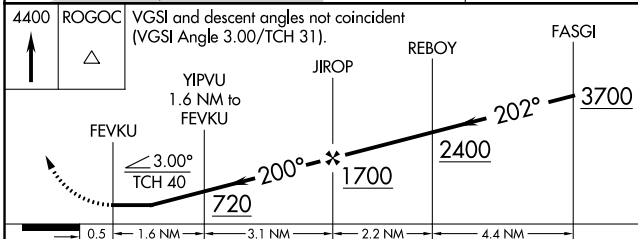
**⚠** Circling NA northwest of Rwy 3-21.  
**⚠** Rwy 21 helicopter visibility reduction below 1 SM NA.  
 DME/DME RNP-0.3 NA. Procedure NA at night.

**MISSED APPROACH:** Climb to 4400  
 direct ROGOC and hold, continue  
 climb-in-hold to 4400.

AWOS-3P <b>119.3</b>	ANCHORAGE CENTER <b>132.75 282.35</b>	CTAF <b>122.5 0</b>
-------------------------	--	------------------------



ELEV 18	TDZE 18
---------	---------



4400	ROGOC	VGSI and descent angles not coincident (VGSI Angle 3.00/TCH 31).				FASGI
0.5	1.6 NM	3.1 NM	2.2 NM	4.4 NM		
CATEGORY	A	B	C	D		
LP MDA	340-1		322 (400-1)			
LNAV MDA	340-1		322 (400-1)			
<b>C</b> CIRCLING	400-1 382 (400-1)	480-1 462 (500-1)	480-1½ 462 (500-1½)	800-2½ 782 (800-2½)		

MIRL Rwy 3-21 0

AK, 27 JAN 2022 to 24 MAR 2022

AK, 27 JAN 2022 to 24 MAR 2022

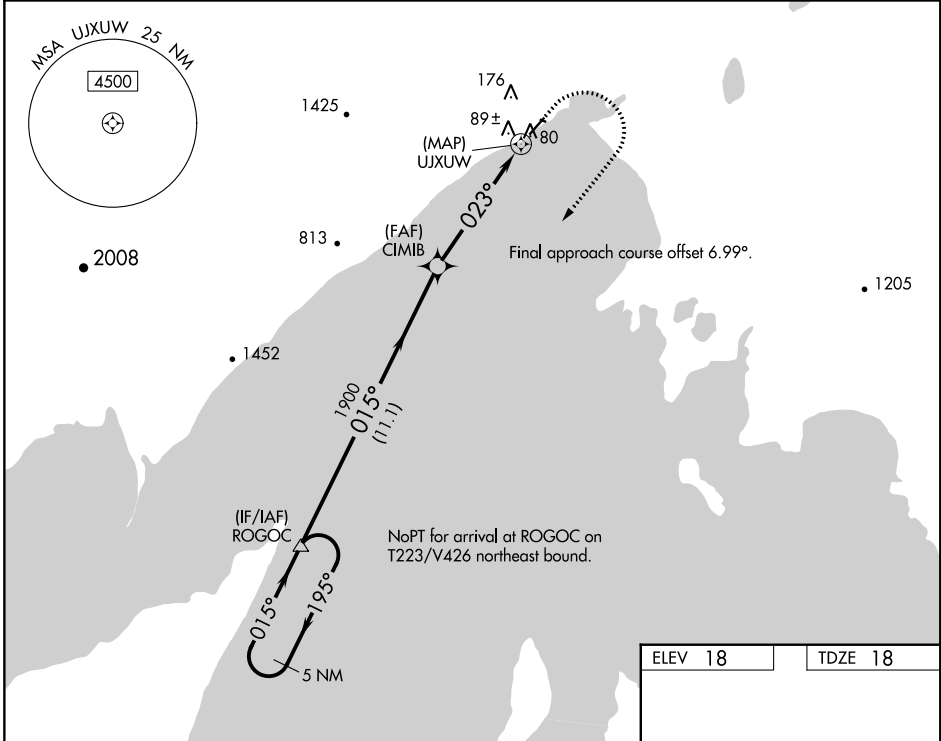
WAAS CH <b>69441</b> <b>W03A</b>	APP CRS <b>023°</b>	Rwy ldg <b>4400</b> TDZE <b>18</b> Apt Elev <b>18</b>
--	------------------------	---

# RNAV (GPS) RWY 3

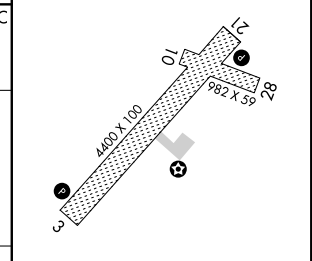
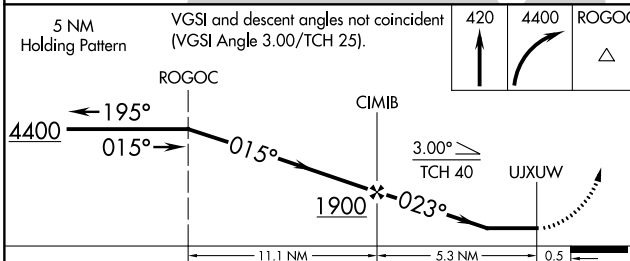
TOGIAK (TOG)(PATG)

- ⚠** Circling NA northwest of Rwy 3-21.
- ⚠** Rwy 3 helicopter visibility reduction below 1 SM NA. DME/DME RNP-0.3 NA. Procedure NA at night.
- MISSED APPROACH:** Climb to 420 then climbing right turn to 4400 direct ROGOC and hold, continue climb-in-hold to 4400.

AWOS-3P <b>119.3</b>	ANCHORAGE CENTER <b>132.75 282.35</b>	CTAF <b>122.5</b> <b>0</b>
-------------------------	--	-------------------------------



ELEV 18	TDZE 18
---------	---------



CATEGORY	A	B	C	D
LP MDA	380-1		362 (400-1)	
LNVA MDA	400-1	382 (400-1)	400-1½	382 (400-1½)
<b>C</b> CIRCLING	400-1 382 (400-1)	480-1 462 (500-1)	480-1½ 462 (500-1½)	800-2½ 782 (800-2½)

MIRL Rwy 3-21 **0**

AK, 27 JAN 2022 to 24 MAR 2022

AK, 27 JAN 2022 to 24 MAR 2022