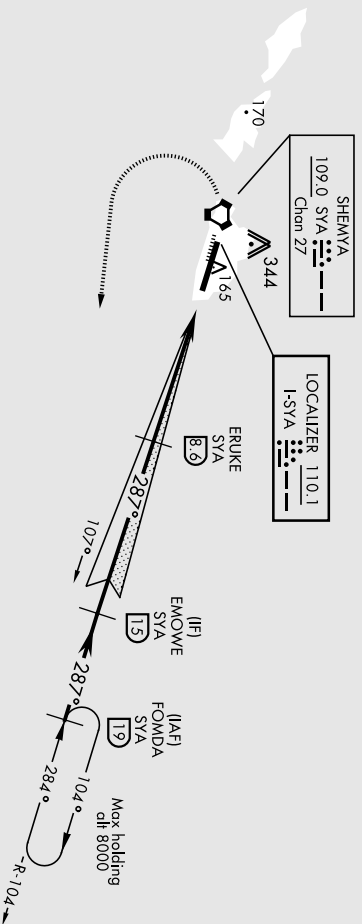
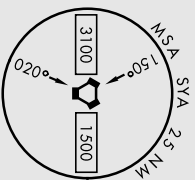


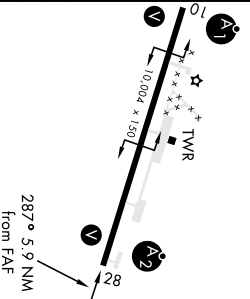
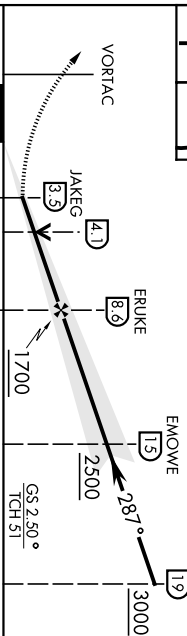
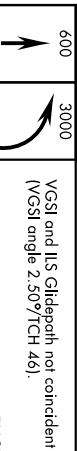
LOC 1- <b>SYA</b> <b>110.1</b>	APCH CRS <b>287°</b>	Rwy Idg <b>10,004</b>	TDZE <b>88</b>	ASOS <b>135.65</b>
	Arpt Elev <b>98</b>			
* When ALS Inop, increase CAT Ab vis to 1 mile, CAT CDE vis to 1 1/8 miles. ** Circling Not Authorized in area N of Rwy 10-28.		AI-1246 [USA F]	SALS 	MISSED APPROACH: Climb to 600, then climbing left turn to 3000, intercept SYA R-104 direct FOMDA and hold.
ANCHORAGE CENTER <b>119.1 339.8</b>		CTAF <b>127.2 352.05 0</b>		

CAUTION: Numerous obstructions in area N of Rwy 10-28.



EMERG SAFE ALT 100 NM 5200

ELEV 98	TDZE 88
---------	---------



CATEGORY	A	B	C	D	E
S-ILS 28	288-3/4 200 [200-3/4]				
S-LOC 28 *	500-3/4 412 [500-3/4]	500-1 412 [500-1]	500-1 1/2 660-2		
CIRCLING **	402 [500-1]	462 [500-1]	462 [500-1 1/2]	562 [600-2]	

HIRL Rwy 10-28	
REIL Rwy 10-28	

# VOR/DME or TACAN RWY 10

AL-1246 [USAF]

EARECKSON AS (PASY)

VORTAC SYA 109.0 Chan 27	APCH CRS 092°	Rwy Idg 10,004	THRE 98	Appt Elev 98
--------------------------------	------------------	-------------------	------------	-----------------

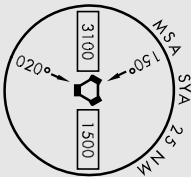
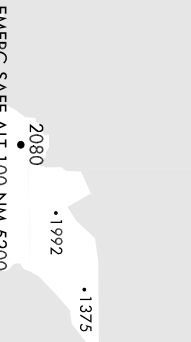
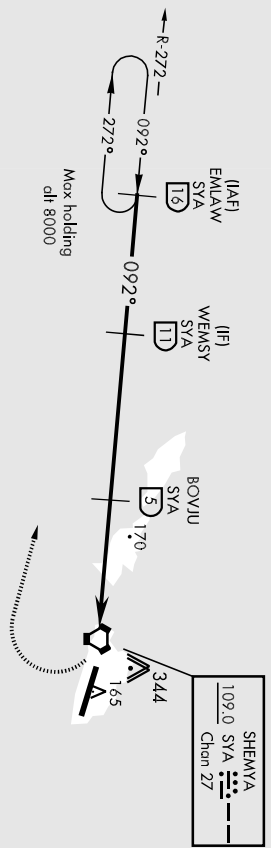


MISSED APPROACH: Climb to 1200', then climbing right turn to 4000', Intercept SYA R-272 direct EMLAW and hold.

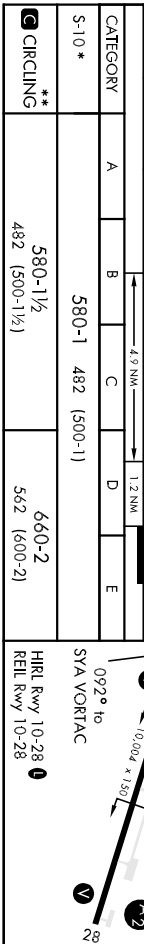
\*\* When ALS Inop, increase vis to 1½ miles.  
\*\* Circling Not Authorized in area N of Rwy 10-28.

ANCHORAGE CENTER 119.1 339.8	CTAF 127.2 352.05 0	ASOS 135.65
---------------------------------	------------------------	----------------

CAUTION: Numerous obstructions in area N of Rwy 10-28.



EMLAW (16)	WEMSY (11)	BOYJU (5)	VORTAC					EMLAW (16)
			1200	4000	R-272			
4000			4.9 NM			1200		
2500			1.2 NM			4000		
092°			EIVEK (07)			R-272		
2.56° ICH 42								
CATEGORY	A	B	C	D	E			
S-10 *	580-1 482 (500-1)							
CIRCLING **	580-1½			660-2				
	482 (500-1½)			562 (600-2)				
ELEV 98			THRE 98					



SHEMYA I., ALEUTIAN I., ALASKA  
Ampl 4 27JUN13  
52°43'N-174°07'E  
EARECKSON AS (PASY)  
VOR/DME or TACAN RWY 10

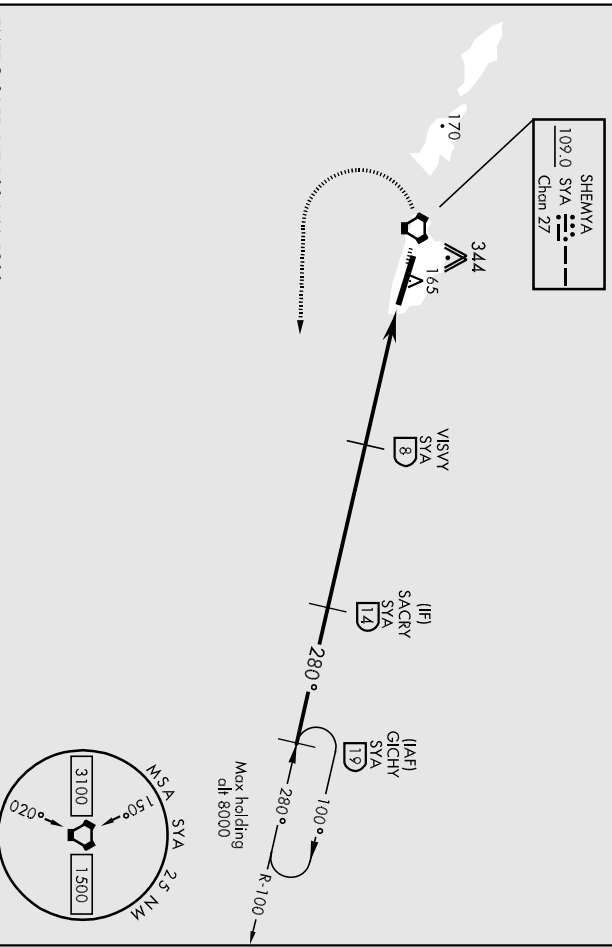
# VOR/DME or TACAN RWY 28

AL-1246 (USAF)

FARECKSON AS (PASY)

VORTAC SYA 109.0 Chan 27	APCH CRS 280°	Rwy Idg 10,004	THRE Elev 83	ASOS 135.65
* When A/S Inop, increase CAT AB vis to 1 mile, CAT CDE vis to 1½ miles		SALS A2	MISSED APPROACH: Climbing left turn to 3000, intercept SYA R-100 direct GICHY and hold.	
** Circling Not Authorized in area N of Rwy 10-28.		ANCHORAGE CENTER 119.1 339.8		
		CTAF 127.2 352.05 0		

CAUTION: Numerous obstructions in area N of Rwy 10-28.

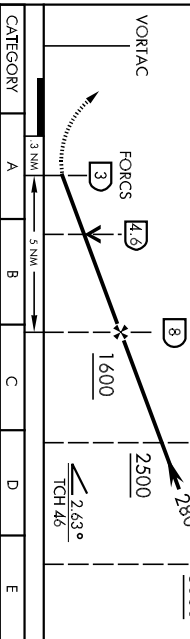


AK, 19 JUL 2018 to 13 SEP 2018

AK, 19 JUL 2018 to 13 SEP 2018

EMERG SAFE ALT 100 NM 5200

3000 GICHY R-100 19						ELEV 98	THRE 83
------------------------------	--	--	--	--	--	---------	---------



VORTAC							
CATEGORY	A	B	C	D	E		
S-28 *	620-¾ 537 (600-¾)	620-1½ 537 (600-1½)	620-1 537 (600-1)	660-2 562 (600-2)	620-1¼ 537 (600-1¼)		
CIRCLING **	522 (600-1)	522 (600-1½)	522 (600-1)	562 (600-2)	522 (600-1)		

SHEMYA I., ALEUTIAN I., ALASKA  
52°43'N-174°07'E  
FARECKSON AS (PASY)  
Ampl 4 27JUN13  
VOR/DME or TACAN RWY 28