

13178

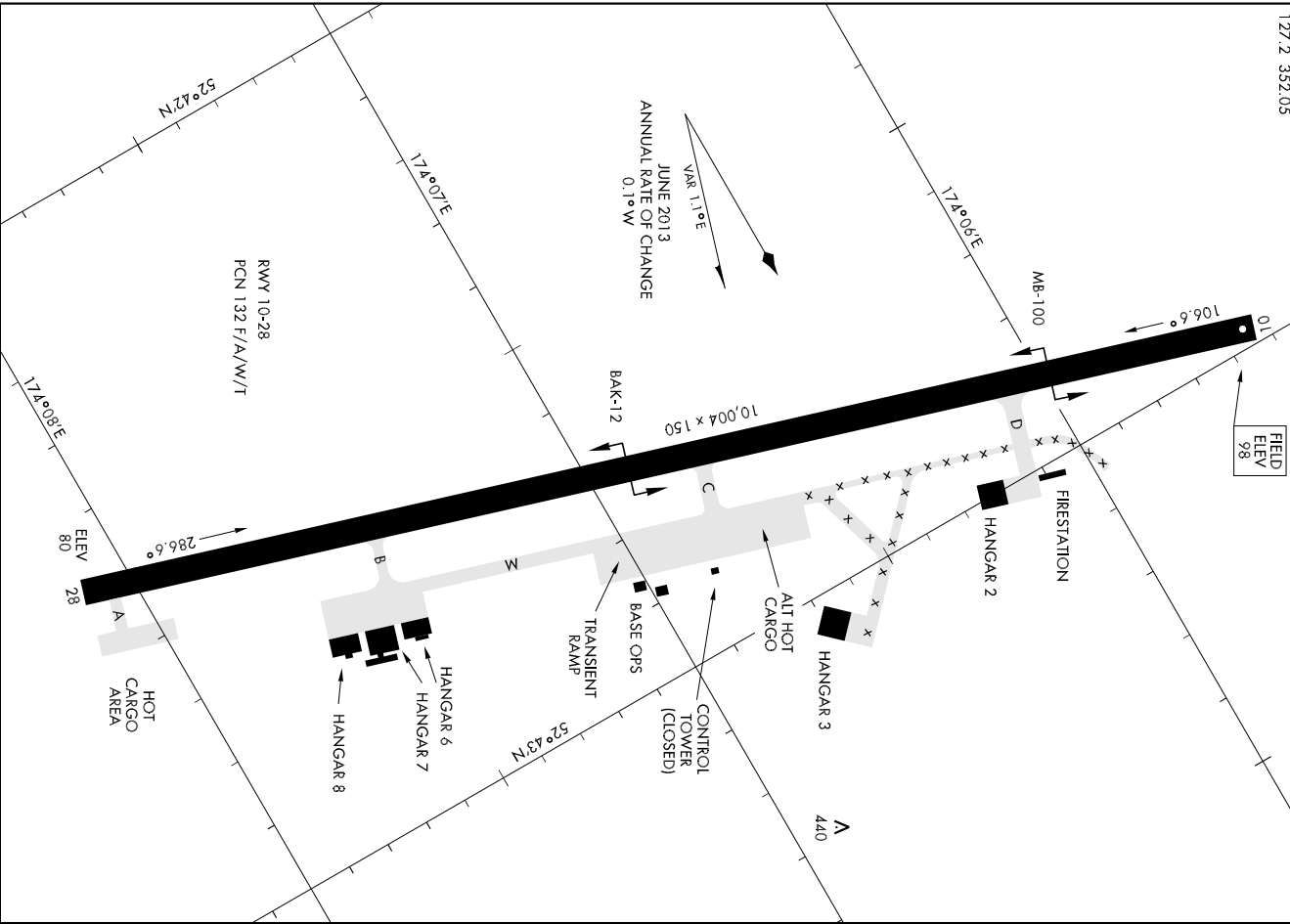
# AIRPORT DIAGRAM

AFD-1246 [USAF]

EARECKSON AS (PASV)

SHEMYA ISLAND, ALASKA

CTAF  
127.2 352.05



AK, 08 NOV 2018 to 03 JAN 2019

AK, 08 NOV 2018 to 03 JAN 2019

# AIRPORT DIAGRAM

SHEMYA ISLAND, ALASKA  
EARECKSON AS (PASV)

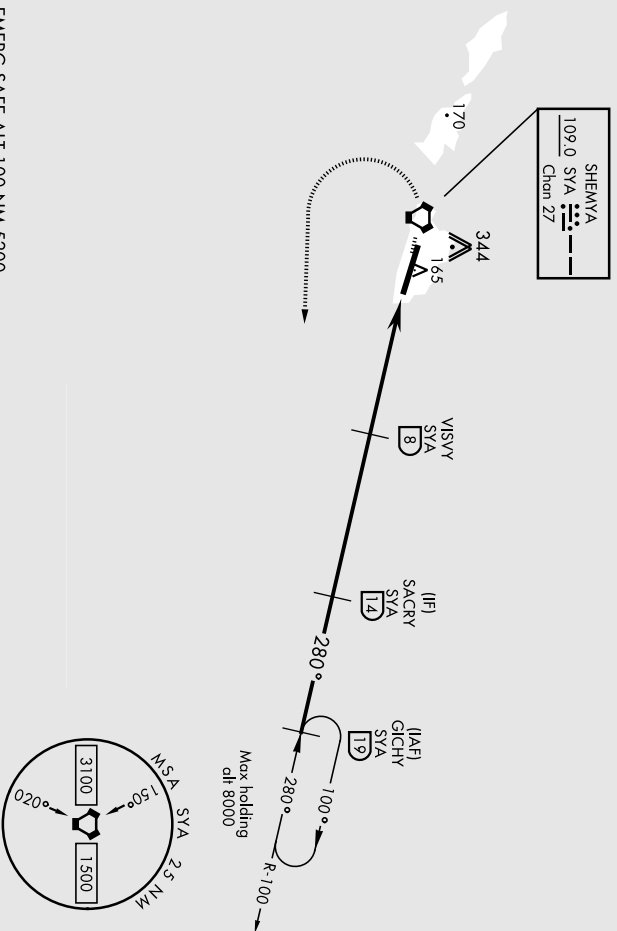
SHEMVA I., ALEUTIAN I., ALASKA

# VOR/DME or TACAN RWY 28

18312

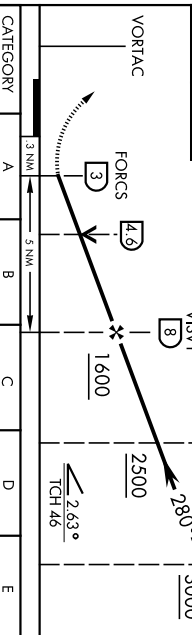
VORTAC SYA <b>109.0</b> Chan 27	APCH CRS <b>280°</b>	Rwy Idg <b>10,004</b>	THRE <b>83</b>	AI-1246 [USAF]	EAARECKSON AS (PAS)
		Arpt Elev <b>98</b>		SALS <b>A2</b>	MISSED APPROACH: Climbing left turn to 3000, intercept SYA R-100 direct GICHY and hold.
* When AIS inop, increase CAT AB vis to 1 mile, CAT CDE vis to 1½ miles ** Circling Not Authorized in area N of Rwy 10-28.					
ANCHORAGE CENTER <b>119.1 339.8</b>		CTAF <b>127.2 352.05 0</b>		ASOS <b>135.65</b>	

CAUTION: Numerous obstructions in area N of Rwy 10-28.  
Missed approach requires use of RNAV or ATC radar monitoring.

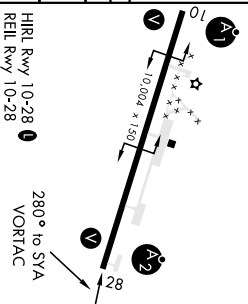


EMERG SAFE ALT 100 NM 5200

3000 GICHY R-100 <b>19</b>						ELEV 98	THRE 83
-------------------------------------	--	--	--	--	--	---------	---------



VORTAC							
	FORCS	VISVY	SAGRY	GICHY			
	3	8	14	19			
	3 NM	5 NM					
			1600	2500	263°		
			TCH 46				
CATEGORY	A	B	C	D	E		
S-28 *	620-¾ (532 (600-¾))	620-1¼ (532 (600-1¼))	620-1½ (523 (600-1½))	660-2 (563 (600-2))			
CIRCLING **	620-1 (523 (600-1))	620-1½ (523 (600-1½))	660-2 (563 (600-2))				

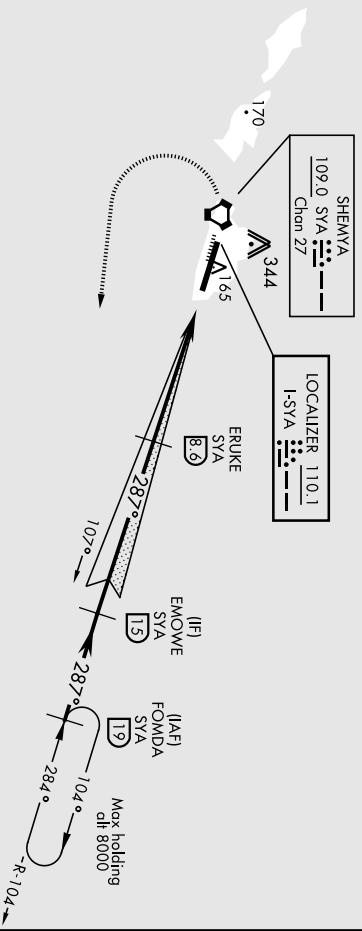
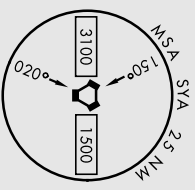


SHEMVA I., ALEUTIAN I., ALASKA  
Amdt 5 08NOV18  
52°43'N-117°07'E  
FAARECKSON AS (PAS)

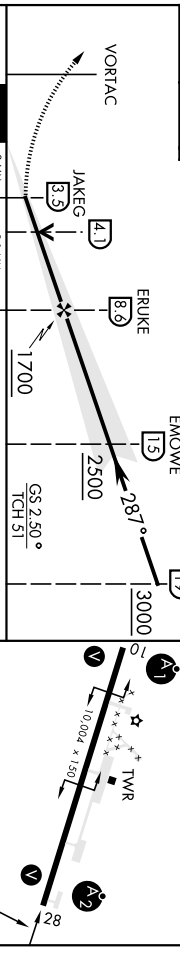
# VOR/DME or TACAN RWY 28

LOC 1-SYA <b>110.1</b>	APCH CRS 287°	Rwy Idg 10,004	TDZE 88	ASOS 135.65
	Arpt Elev 98	AI-1246 [USA#]	SALS 	MISSED APPROACH: Climb to 600, then climbing left turn to 3000, intercept SYA R-104 direct FOMDA and hold.
<p>* When ALS Inop, increase CAT AB vis to 1 mile, CAT CDE vis to 1 1/8 miles. ** Circling Not Authorized in area N of Rwy 10-28.</p>		<p>ANCHORAGE CENTER <b>119.1 339.8</b></p>		
<p>EMERG SAFE ALT 100 NM 5200</p>		<p>CTAF <b>127.2 352.05 0</b></p>		

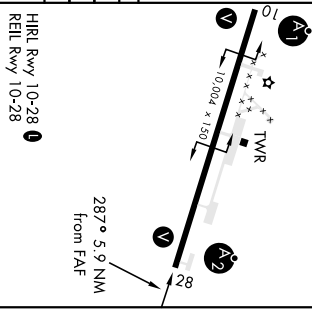
CAUTION: Numerous obstructions in area N of Rwy 10-28.



600	3000	ELEV 98	TDZE 88
<p>VGSI and ILS Glidepath not coincident (VGSI angle 2.50°/TCH 461)</p>			



CATEGORY	A	B	C	D	E
S-ILS 28	288-3/4 200 [200-3/4]				
S-LOC 28 *	500-3/4 412 [500-3/4]	500-1 412 [500-1]	500-1 1/2 660-2		
CIRCLING **	500-1 402 [500-1]	560-1 462 [500-1]	560-1 1/2 462 [500-1 1/2]	562 [600-2]	

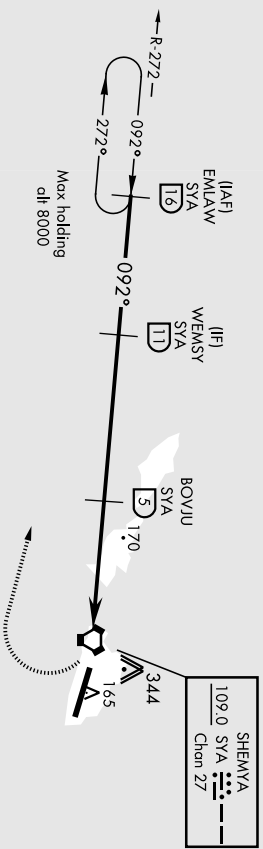


SHEMYA I., ALEUTIAN I., ALASKA 52°43'N-174°07'E FARECKSON AS (PAS)  
 Andl 5 07DEC17 IIS or LOC/DME RWY 28

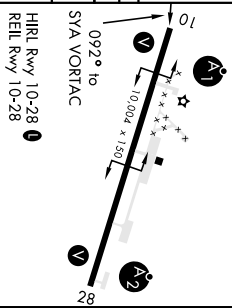
# VOR/DME or TACAN Rwy 10

VORTAC SYA <b>109.0</b> Chan <b>27</b>	APCH CRS <b>092°</b>	Rwy Idg <b>10,004</b>	THRE <b>98</b>	ASPL Elev <b>98</b>	ALSF-1 	MISS'D APPROACH: Climb to 1200, then climbing right turn to 4000, intercept SYA R-272 direct EMLAW and hold.	EARECKSON AS (PAS)
ANCHORAGE CENTER			CTAF		ASOS		
<b>119.1 339.8</b>			<b>127.2 352.05 0</b>		<b>135.65</b>		

CAUTION: Numerous obstructions in area N of Rwy 10-28.  
Missed approach requires use of RNAV or ATC radar monitoring.



EMERG SAFE ALT 100 NM 5200					ELEV	98	THRE	98	
EMLAW 16	WEMSY 11	BOYJU 5	VORTAC EIVEK 01		1200	4000	EMLAW R-272 16		
4000	092°	2500	1800		4.8 NM		1.2 NM		
CATEGORY					A	B	C	D	E
S-10 *					460-1 362 (400-1)				
CIRCLING					460-1½ 363 (400-1½)	560-1½ 463 (500-1½)	660-2 563 (600-2)		
SHEMVA I., ALEUTIAN I., ALASKA					52°43'N-174°07'E				
SHEMVA I., ALEUTIAN I., ALASKA					EARECKSON AS (PAS)				



# VOR/DME or TACAN Rwy 10