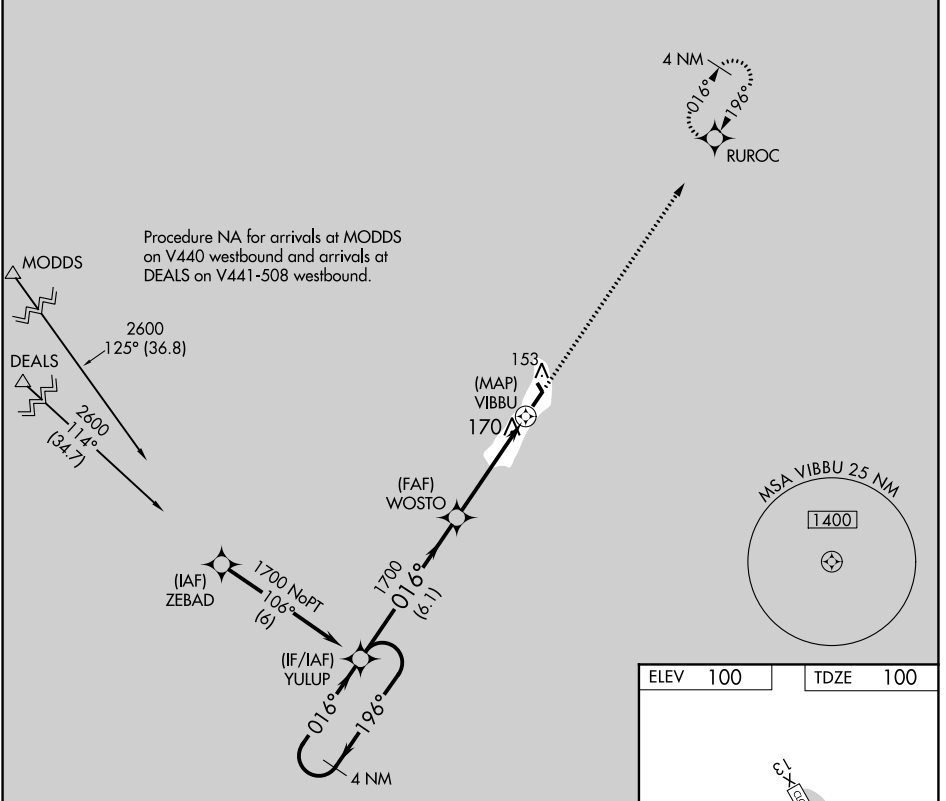


WAAS CH <b>86427</b> <b>W02A</b>	APP CRS <b>016°</b>	Rwy Idg TDZE Apt Elev	<b>3158</b> <b>100</b> <b>100</b>
--	------------------------	-----------------------------	---

**RNAV (GPS) RWY 2**  
MIDDLETON ISLAND (MDO) (P.A.M.D)

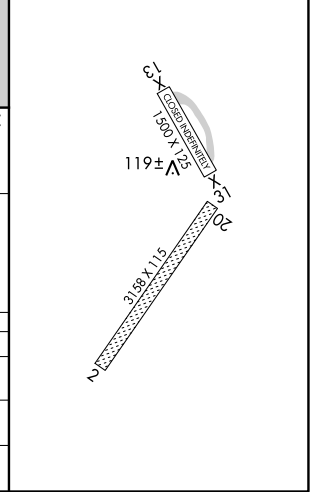
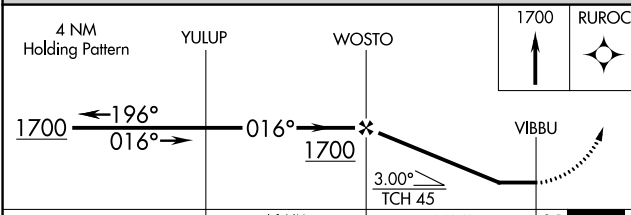
<p><b>▼</b> DME/DME RNP-0.3 NA Procedure NA at night. Helicopter visibility reduction below 1 SM NA.</p>		<p>MISSED APPROACH: Climb to 1700 direct RUROC and hold.</p>	
AWOS-3P <b>135.725</b>	ANCHORAGE CENTER <b>133.6 269.4</b>	JUNEAU RADIO <b>122.05</b>	CTAF <b>122.9</b>



AK, 22 APR 2021 to 17 JUN 2021

AK, 22 APR 2021 to 17 JUN 2021

ELEV 100	TDZE 100
----------	----------



CATEGORY	A	B	C	D
LP MDA	560-1	460 (500-1)	560-1 <sup>3</sup> / <sub>8</sub> 460 (500-1 <sup>3</sup> / <sub>8</sub> )	NA
LNAV MDA	580-1	480 (500-1)	580-1 <sup>3</sup> / <sub>8</sub> 480 (500-1 <sup>3</sup> / <sub>8</sub> )	NA
CIRCLING	600-1	500 (500-1)	600-1 <sup>1</sup> / <sub>2</sub> 500 (500-1 <sup>1</sup> / <sub>2</sub> )	NA

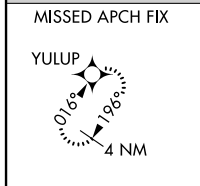
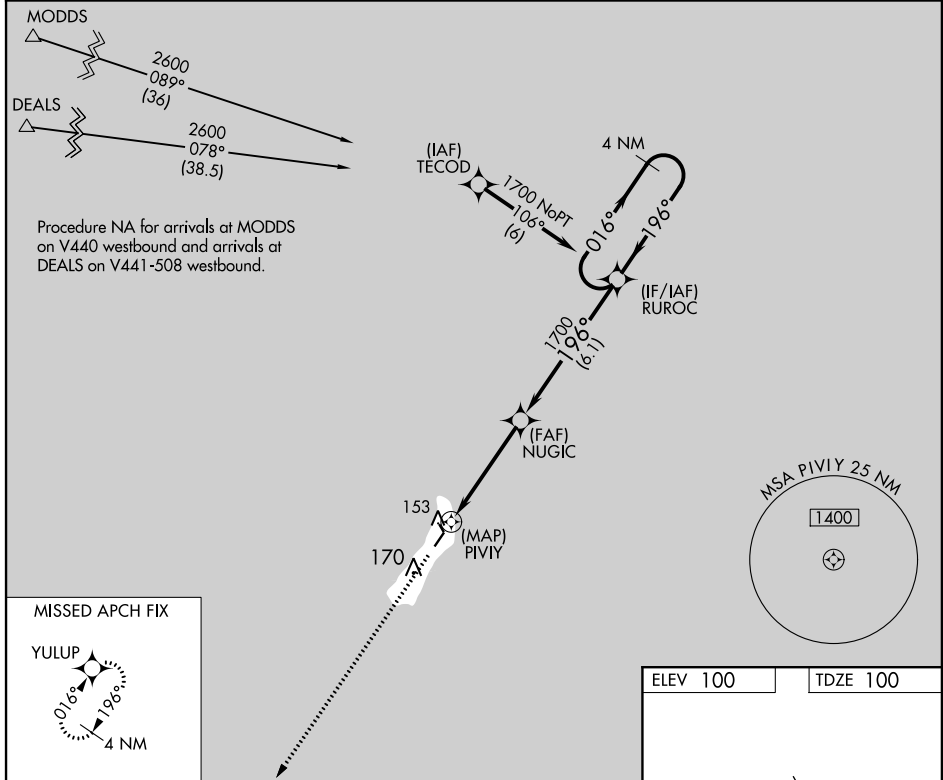
WAAS CH <b>42627</b> <b>W20A</b>	APP CRS <b>196°</b>	Rwy Idg TDZE Apt Elev	<b>3158</b> <b>100</b> <b>100</b>
--	------------------------	-----------------------------	---

# RNAV (GPS) RWY 20

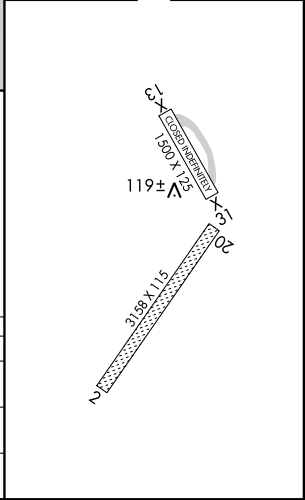
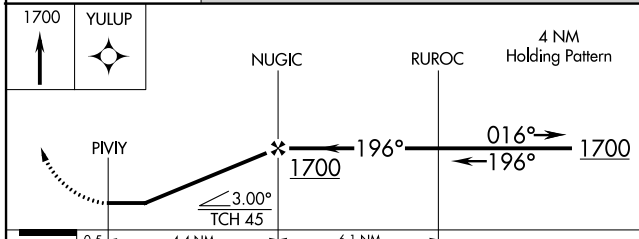
MIDDLETON ISLAND (MDO) (PAMD)

**▼** DME/DME RNP-0.3 NA. Procedure NA at night. Helicopter visibility reduction below 1 SM NA. MISSED APPROACH: Climb to 1700 direct YULUP and hold.

AWOS-3P <b>135.725</b>	ANCHORAGE CENTER <b>133.6 269.4</b>	JUNEAU RADIO <b>122.05</b>	CTAF <b>122.9</b>
---------------------------	--	-------------------------------	----------------------



ELEV 100	TDZE 100
----------	----------



CATEGORY	A	B	C	D
LP MDA	420-1 320 (400-1)			NA
LNAV MDA	660-1	560 (600-1)	660-1½ 560 (600-1½)	NA
CIRCLING	660-1	560 (600-1)	660-1½ 560 (600-1½)	NA

AK, 22 APR 2021 to 17 JUN 2021

AK, 22 APR 2021 to 17 JUN 2021

VOR/DME MDO <b>115.3</b> Chan <b>100</b>	APP CRS <b>022°</b>	Rwy Idg <b>3158</b> TDZE <b>100</b> Apt Elev <b>100</b>
--	------------------------	---

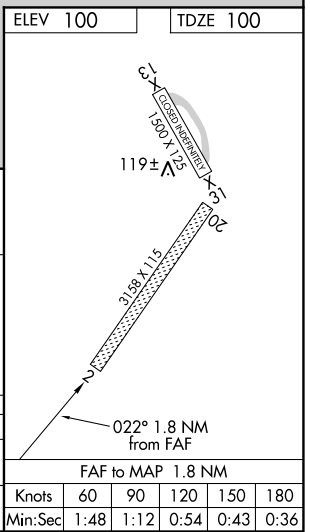
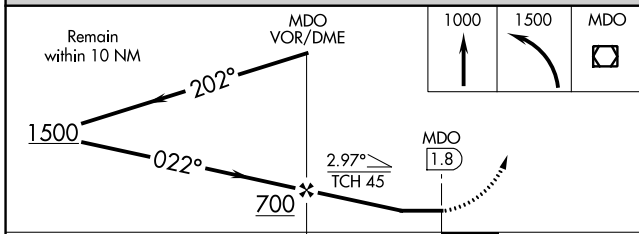
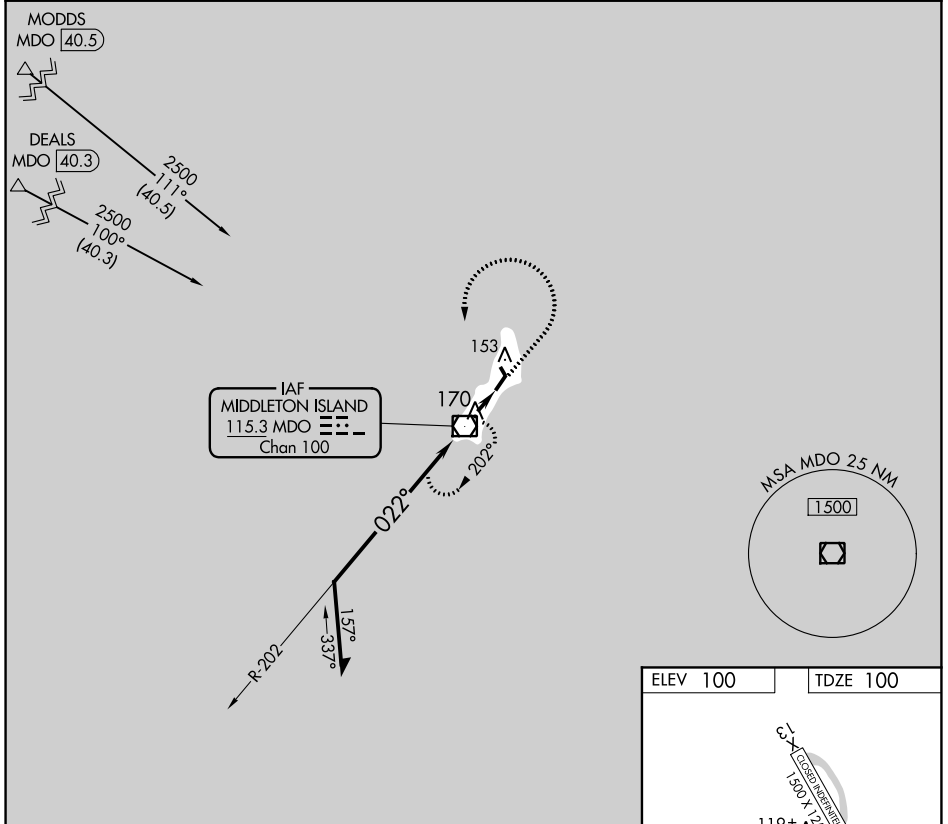
# VOR RWY 2

MIDDLETON ISLAND (MDO) (PAMD)

▼ When local altimeter setting not received, procedure NA.  
Procedure NA at night.  
Helicopter visibility reduction below 1 SM NA.

MISSED APPROACH: Climb to 1000 then climbing left turn to 1500 direct MDO VOR/DME and hold.

AWOS-3P <b>135.725</b>	ANCHORAGE CENTER <b>133.6 269.4</b>	JUNEAU RADIO <b>122.05</b>	CTAF <b>122.9</b>
---------------------------	--	-------------------------------	----------------------



CATEGORY	A	B	C	D
S-2	560-1	460 (500-1)	560-1 <sup>3</sup> / <sub>8</sub> 460 (500-1 <sup>3</sup> / <sub>8</sub> )	NA
CIRCLING	600-1	500 (500-1)	600-1 <sup>1</sup> / <sub>2</sub> 500 (500-1 <sup>1</sup> / <sub>2</sub> )	NA

FAF to MAP 1.8 NM					
Knots	60	90	120	150	180
Min:Sec	1:48	1:12	0:54	0:43	0:36

AK, 22 APR 2021 to 17 JUN 2021

AK, 22 APR 2021 to 17 JUN 2021