

WAAS CH 87033 W17A	APP CRS 173°	Rwy Idg TDZE Apt Elev	3200 20 20
--	------------------------	-----------------------------	---------------------------------------

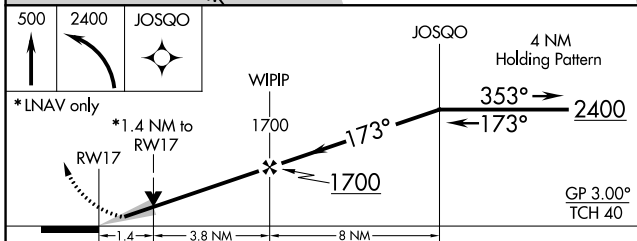
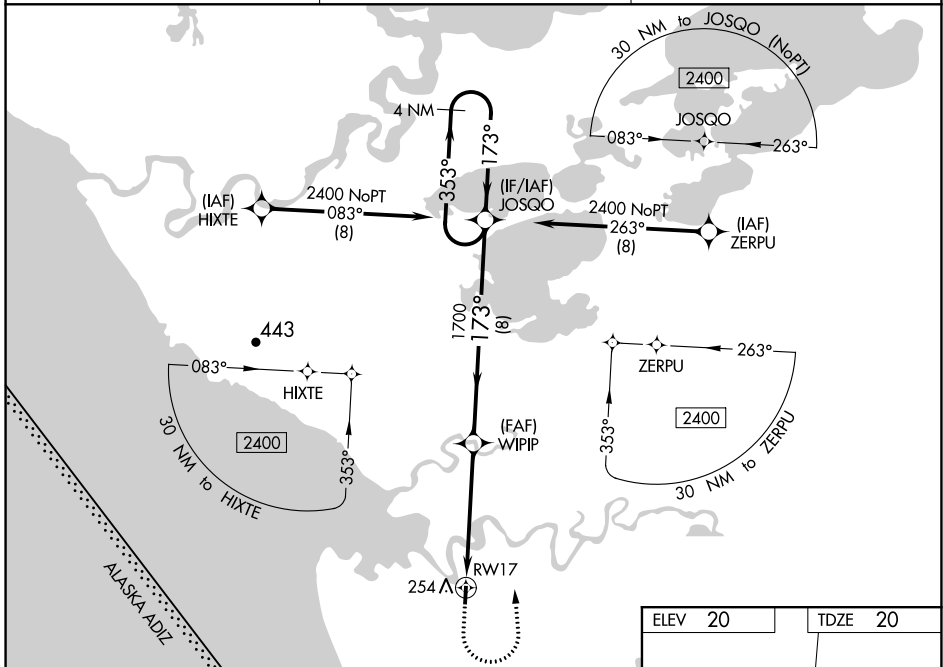
RNAV (GPS) RWY 17

KIPNUK (IIK) (PAKI)

⚠ Baro-VNAV NA when using Toksook Bay altimeter setting. For uncompensated Baro-VNAV systems, LNAV/VNAV NA below -20°C (-4°F) or above 54°C (130°F). DME/DME RNP-0.3 NA. Procedure NA at night. VDP NA when using Toksook Bay altimeter setting. When local altimeter setting not received use Toksook Bay altimeter setting; increase LPV DA to 389 feet and visibility all Cats ¼ SM. Increase LNAV/VNAV DA to 553 feet and visibility all Cats ½ SM. Increase all MDA 120 feet. Increase LNAV Cat C and D visibility to 1¾ SM, Circling Cat C to 2 SM, Cat D to 2¼ SM.

MISSED APPROACH:
Climb to 500 then climbing left turn to 2400 direct JOSQO and hold.

AWOS-3P 118.325	ANCHORAGE CENTER 125.2 372.0	CTAF 122.7 0
---------------------------	--	-------------------------------



ELEV 20	TDZE 20
MIRL Rwy 17-35 0	

CATEGORY	A	B	C	D
LPV DA	270-1 250 (300-1)			
LNAV/VNAV DA	434-1¾ 414 (500-1¾)			
LNAV MDA	520-1	500 (500-1)	520-1¾	500 (500-1¾)
C CIRCLING	580-1	560 (600-1)	580-1½	580-2 560 (600-2)

AK, 12 AUG 2021 to 07 OCT 2021

AK, 12 AUG 2021 to 07 OCT 2021

WAAS CH 93833 W35A	APP CRS 353°	Rwy Idg TDZE Apt Elev	3200 20 20
--	------------------------	-----------------------------	---------------------------------------

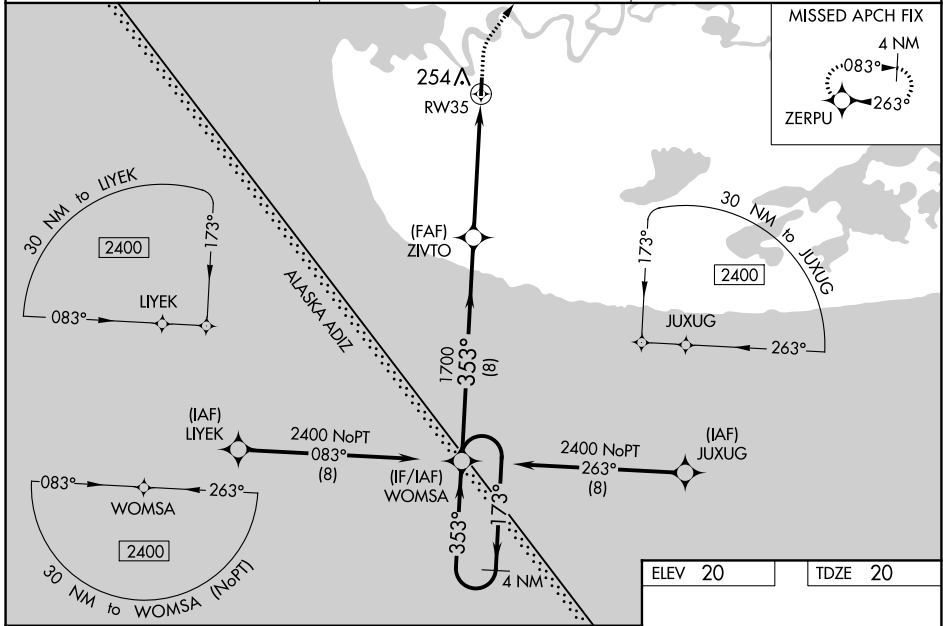
RNAV (GPS) RWY 35

KIPNUK (IIK) (PAKI)

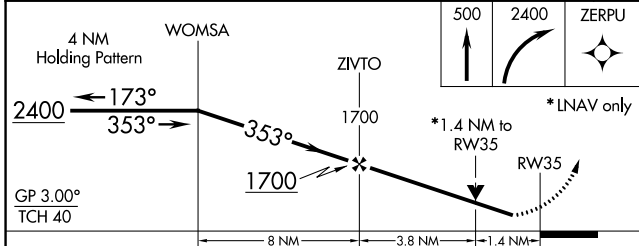
⚠ Baro-VNAV NA when using Toksook Bay altimeter setting. For uncompensated Baro-VNAV systems, LNAV/VNAV NA below -20°C (-4°F) or above 54°C (130°F). Helicopter visibility reduction below ¾ SM NA. DME/DME RNP-0.3 NA. Procedure NA at night. VDP NA when using Toksook Bay altimeter setting. When local altimeter setting is not received use Toksook Bay altimeter setting: increase LPV DA to 389 feet and visibility all Cats ¼ SM. Increase LNAV/VNAV DA to 465 and visibility all Cats ⅓ SM. Increase all MDA 120 feet. Increase LNAV Cat C and D visibility to 1 ¼ SM, Circling Cat C to 2 SM, Cat D to 2 ¼ SM.

MISSED APPROACH: Climb to 500 then climbing right turn to 2400 direct ZERPU and hold.

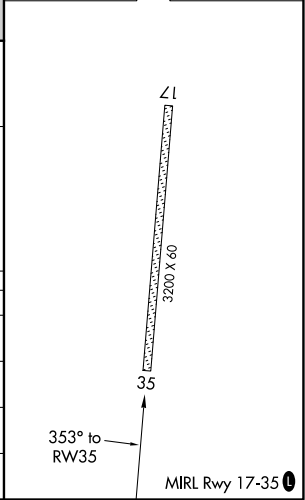
AWOS-3P 118.325	ANCHORAGE CENTER 125.2 372.0	CTAF 122.7
---------------------------	--	----------------------



ELEV 20	TDZE 20
---------	---------



CATEGORY	A	B	C	D
LPV DA	270-1 250 (300-1)			
LNAV/VNAV DA	346-1 ⅓ 326 (400-1 ⅓)			
LNAV MDA	520-1	500 (500-1)	520-1 ⅓	500 (500-1 ⅓)
C CIRCLING	580-1	560 (600-1)	580-1 ½	580-2 560 (600-2)



AK, 12 AUG 2021 to 07 OCT 2021

AK, 12 AUG 2021 to 07 OCT 2021