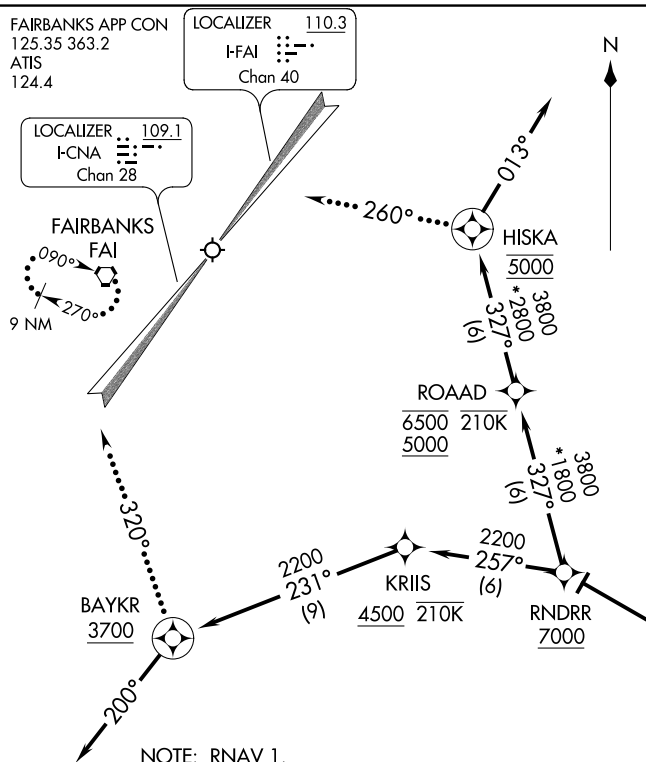


HRDNG TWO ARRIVAL (RNAV)
(RDFLG,HRDNG2) 10DEC15

FAIRBANKS INTL (FAI)(PAFA)
FAIRBANKS, ALASKA



- NOTE: RNAV 1.
- NOTE: GPS required.
- NOTE: RADAR required after RNDRR.
- NOTE: Monitor ATIS for Rwy in use.
- NOTE: Expect Rwy assignment from Fairbanks Approach Control on initial contact.

NOTE: Chart not to scale.

ARRIVAL ROUTE DESCRIPTION

From RDFLG on track 288° to HRDNG, then on track 285° to cross RNDRR at or above 7000.

LANDING RUNWAY 2L: From RNDRR on track 257° to cross KRIIS at or above 4500 and at or below 210K, then on track 231° to cross BAYKR at or above 3700, then on track 200°. Expect RADAR vectors to final approach course.

LANDING RUNWAY 20R: From RNDRR on track 327° to cross ROAAD between 5000 and 6500 and at or below 210K, then on track 327° to cross HSKA at 5000, then on track 013°. Expect RADAR vectors to final approach course.

LOST COMMUNICATIONS

RUNWAY 2L: After BAYKR fly heading 320°, maintain 3700, intercept and execute the ILS or LOC RWY 2L approach. If unable, proceed direct to FAI VORTAC and hold, maintain 5000.

RUNWAY 20R: After HSKA, fly heading 260°, maintain 4200, intercept and execute the ILS or LOC RWY 20R approach. If unable, proceed direct to FAI VORTAC and hold, maintain 5000.

RDFLG
12000

Expect 17000
when DELTA ATCAA
is active.

(RDFLG,HRDNG2) 17341
HRDNG TWO ARRIVAL (RNAV)

AL-1234 (FAA)

FAIRBANKS INTL (FAI)(PAFA)
FAIRBANKS, ALASKA

(CAWIN.LIBER3) 17173

LIBER THREE ARRIVAL (RNAV)

FAIRBANKS INTL (FAI) (PAFA)
FAIRBANKS, ALASKA

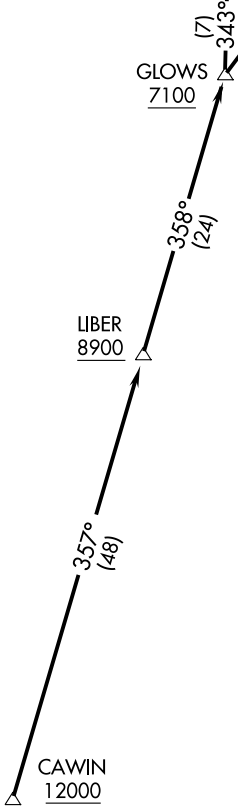
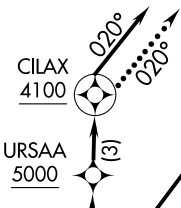
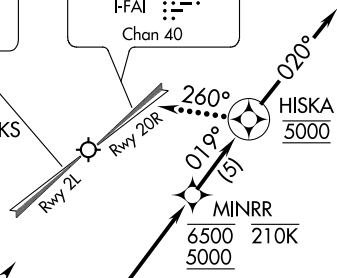
AL-1234 (FAA)

FAIRBANKS APP CON
125.35 363.2
ATIS
124.4

NOTE: Chart not to scale.

LOCALIZER 109.1
I-CNA
Chan 28

LOCALIZER 110.3
I-FAI
Chan 40



- NOTE: RNAV 1.
- NOTE: GPS required.
- NOTE: RADAR required after GLOWES.
- NOTE: Monitor ATIS for Rwy in use.
- NOTE: Expect Rwy assignment from Fairbanks Approach control upon initial contact.

ARRIVAL ROUTE DESCRIPTION

From CAWIN on track 357° to cross LIBER at or above 8900, then on track 358° to cross GLOWES at or above 7100.

LANDING RUNWAY 2L: From GLOWES on track 343° to cross URSAA at or above 5000, then on track 343° to cross CILAX at or above 4100, then on track 020°. Expect RADAR vectors to final approach course.

LANDING RUNWAY 20R: From GLOWES on track 018° to cross MINRR between 5000 and 6500 and at or below 210K, then on track 019° to cross HISKA at 5000, then on track 020°. Expect RADAR vectors to final approach course.

LOST COMMUNICATIONS

RUNWAY 2L: After CILAX, fly heading 020° then proceed on the ILS or LOC RWY 2L approach. If unable, proceed direct FAI VORTAC and hold, maintain 5000.

RUNWAY 20R: After HISKA, fly heading 260°, maintain 4200, then proceed on the ILS or LOC RWY 20R approach. If unable, proceed direct FAI VORTAC and hold, maintain 5000.

LIBER THREE ARRIVAL (RNAV)

(CAWIN.LIBER3) 22JUN17

FAIRBANKS, ALASKA
FAIRBANKS INTL (FAI) (PAFA)

AK, 08 NOV 2018 to 03 JAN 2019

AK, 08 NOV 2018 to 03 JAN 2019