

(DRLL2.DRLL) 17341

DRLL TWO DEPARTURE (RNAV)

AL-1234 (FAA)

FAIRBANKS INTL (FAI) (PAFA)
FAIRBANKS, ALASKA

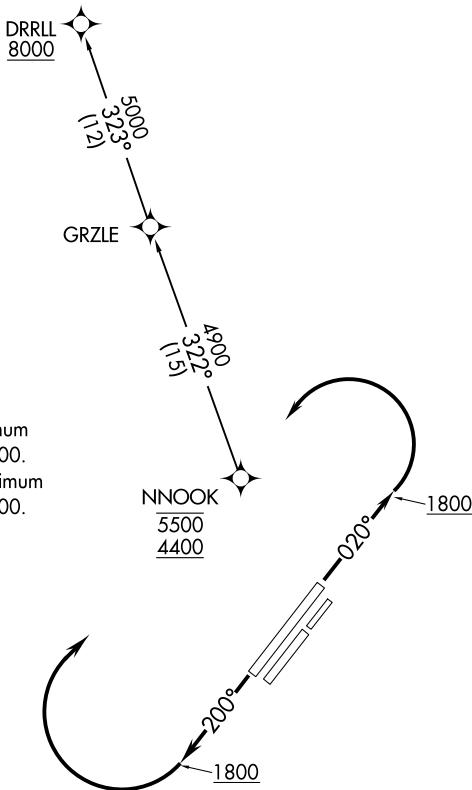
ATIS 124.4
 CLNC DEL
 127.6
 GND CON
 121.9
 FAIRBANKS TOWER
 118.3 257.8
 FAIRBANKS DEP CON
 125.35 363.2 (180°-359°)
 126.5 381.4 (360°-179°)

**TOP ALTITUDE:
ASSIGNED BY ATC**

TAKEOFF MINIMUMS

Rwy 2L: Standard with minimum climb of 500' per NM to 1800.

Rwy 2OR: Standard with minimum climb of 500' per NM to 3000.



NOTE: GPS required.
NOTE: RNAV-1.

NOTE: Chart not to scale.



DEPARTURE ROUTE DESCRIPTION

TAKEOFF RUNWAY 2L: Climb heading 020° to 1800, then left turn direct NNOOK, cross NNOOK at or above 4400 and at or below 5500, then on DRRLL Transition.

TAKEOFF RUNWAY 2OR: Climb heading 200° to 1800, then right turn direct NNOOK, cross NNOOK at or above 4400 and at or below 5500, then on DRRLL Transition.

DRLL TRANSITION (DRLL2.DRLL)

DRLL TWO DEPARTURE (RNAV)
 (DRLL2.DRLL) 10DEC15

FAIRBANKS, ALASKA
 FAIRBANKS INTL (FAI) (PAFA)

AK, 13 SEP 2018 to 08 NOV 2018

AK, 13 SEP 2018 to 08 NOV 2018

DEPARTURE ROUTE DESCRIPTION

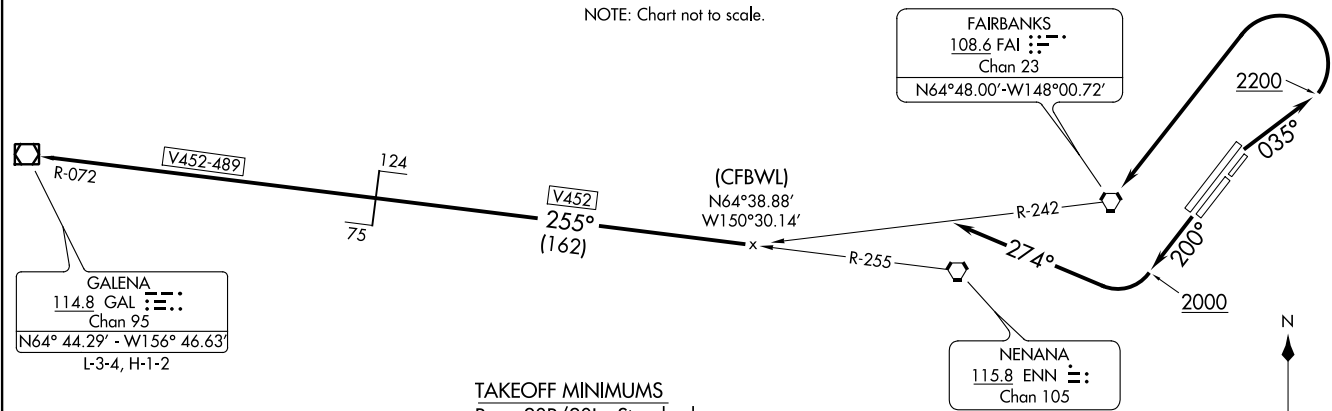
TAKEOFF RUNWAYS 2L/2R: Climb heading 035° to 2200, then left turn direct FAI VORTAC, thence . . .

TAKEOFF RUNWAYS 20L/20R: Climb heading 200° to 2000, then right turn heading 274°, thence . . .

. . . intercept FAI R-242 to ENN R-255, then on ENN R-255 and GAL R-072 to GAL VOR/DME, then continue climb on assigned route and altitude.

ATIS 124.4
CLNC DEL 127.6
GND CON 121.9
FAIRBANKS TOWER 118.3 257.8
FAIRBANKS DEP CON 125.35 363.2 (180°-359°)
126.5 381.4 (360°-179°)

NOTE: Chart not to scale.



TAKEOFF MINIMUMS
Rwys 20R/20L: Standard.
Rwys 2L/2R: Standard with a minimum climb of 230' per NM to 2200.

NOTE: DME Required

GALENA FIVE DEPARTURE
(GLEENS, GAL) 10DECT5

FAIRBANKS, ALASKA
FAIRBANKS INTL (FAI) (PAFA)

(GLEENS, GAL) 17341
GALENA FIVE DEPARTURE

AL-1234 (FAA)

FAIRBANKS INTL (FAI) (PAFA)
FAIRBANKS, ALASKA

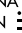
(MKNLY1.TKA) 17341

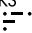
MCKINLEY ONE DEPARTURE

AL-1234 (FAA)

FAIRBANKS INTL (FAI) (PAFA)
FAIRBANKS, ALASKA

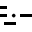
ATIS 124.4
 CLNC DEL
 127.6
 GND CON
 121.9
 FAIRBANKS TOWER
 118.3 257.8
 FAIRBANKS DEP CON
 125.35 363.2 (180°-359°)
 126.5 381.4 (360°-179°)

NENANA
 115.8 ENN 
 Chan 105

FAIRBANKS
 108.6 FAI 
 Chan 23
 N64°48.00'-W148°00.72'

PUYVO
 N64°03.33'
 W149°19.75'

J125
 V436
 171°
 (108)

TALKEETNA
 116.2 TKA 
 Chan 109
 N62°17.90'
 W150°06.32'
 L-3-4,
 H-1-2

91
 50

R-352

TAKEOFF MINIMUMS

Rwy's 2L/R: Standard with minimum
 climb of 230' per NM to 2000.
 Rwy's 20L/R: Standard.

NOTE: DME required.

NOTE: Chart not to scale.



DEPARTURE ROUTE DESCRIPTION

TAKEOFF RUNWAYS 2L/R: Climb heading
 035° to 2000, then left turn direct FAI VORTAC,
 thence

TAKEOFF RUNWAYS 20L/R: Climb heading
 200° to 2000, then right turn heading 227°,
 thence

. . . . intercept FAI R-197 to PUYVO/FAI 56
 DME fix then on ENN R-171 and TKA R-352
 to TKA VOR/DME, then on assigned route
 and altitude.

AK, 13 SEP 2018 to 08 NOV 2018

AK, 13 SEP 2018 to 08 NOV 2018

MCKINLEY ONE DEPARTURE

(MKNLY1.TKA) 10DEC15

FAIRBANKS, ALASKA
FAIRBANKS INTL (FAI) (PAFA)

(PUYVO2.PUYVO) 17341

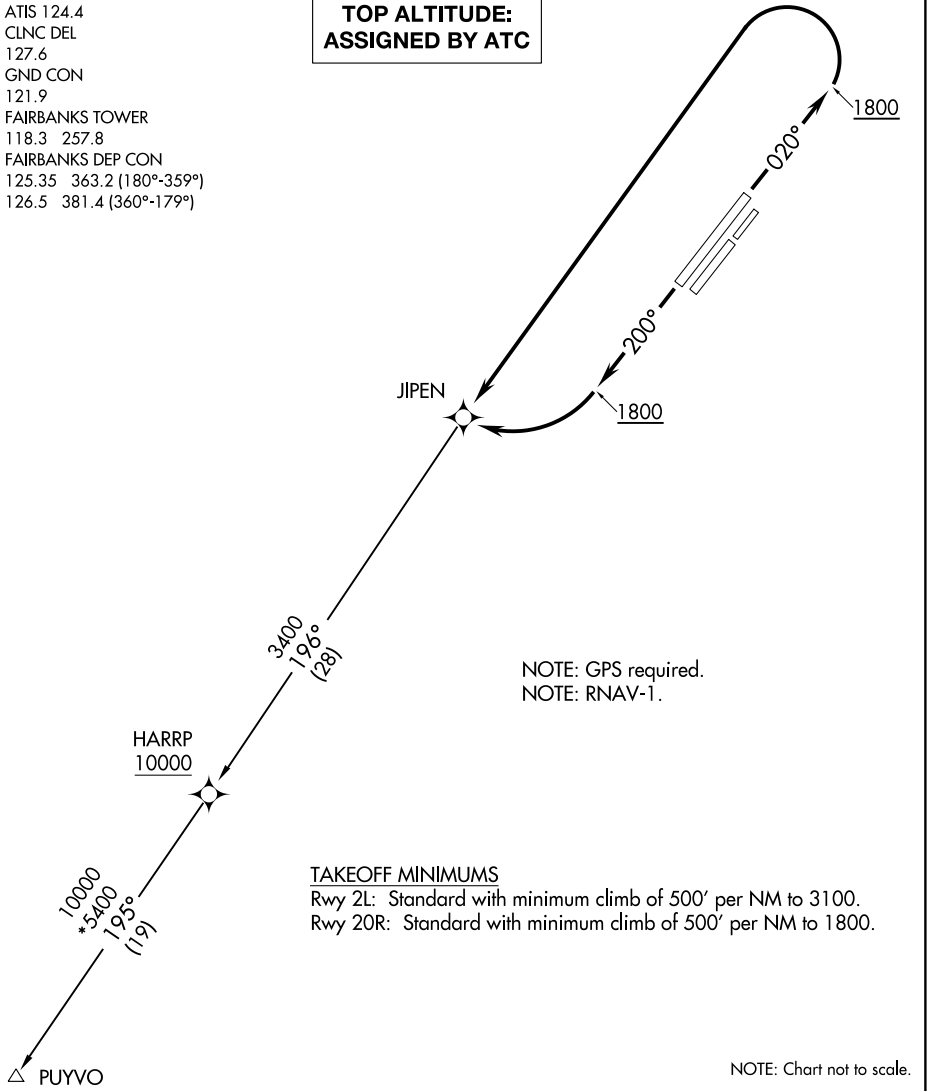
PUYVO TWO DEPARTURE (RNAV)

AL-1234 (FAA)

FAIRBANKS INTL (FAI) (PAFA)
FAIRBANKS, ALASKA

ATIS 124.4
 CLNC DEL
 127.6
 GND CON
 121.9
 FAIRBANKS TOWER
 118.3 257.8
 FAIRBANKS DEP CON
 125.35 363.2 (180°-359°)
 126.5 381.4 (360°-179°)

**TOP ALTITUDE:
ASSIGNED BY ATC**



NOTE: GPS required.
NOTE: RNAV-1.

TAKEOFF MINIMUMS

Rwy 2L: Standard with minimum climb of 500' per NM to 3100.
Rwy 20R: Standard with minimum climb of 500' per NM to 1800.

NOTE: Chart not to scale.

AK, 13 SEP 2018 to 08 NOV 2018

AK, 13 SEP 2018 to 08 NOV 2018



DEPARTURE ROUTE DESCRIPTION

TAKEOFF RUNWAY 2L: Climb heading 020° to 1800, then left turn direct JIPEN, then on PUYVO transition.

TAKEOFF RUNWAY 20R: Climb heading 200° to 1800, then right turn direct JIPEN, then on PUYVO transition.

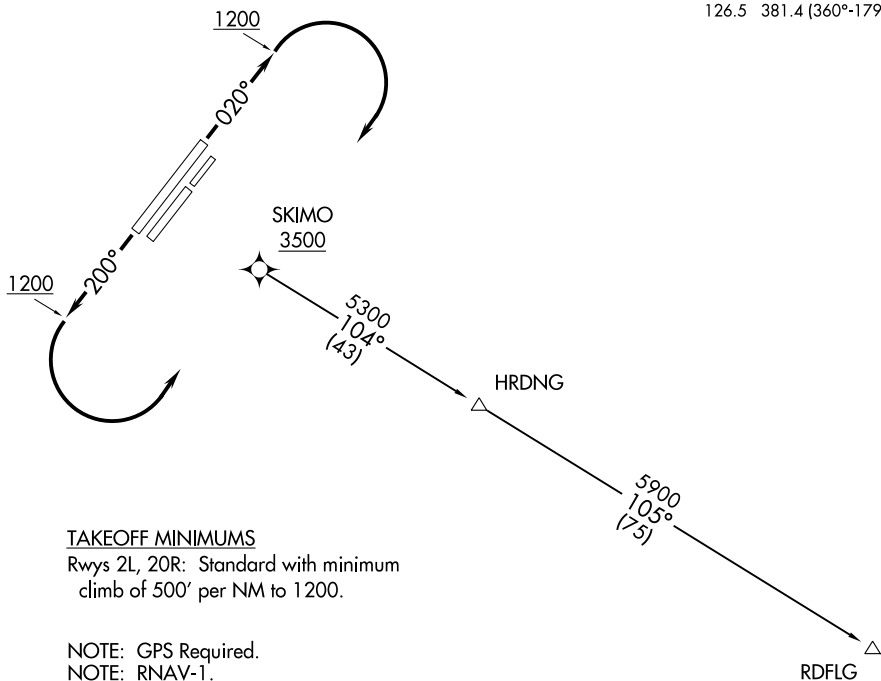
PUYVO TRANSITION (PUYVO2.PUYVO)

PUYVO TWO DEPARTURE (RNAV)
 (PUYVO2.PUYVO) 10DEC15

FAIRBANKS, ALASKA
 FAIRBANKS INTL (FAI) (PAFA)

**TOP ALTITUDE:
ASSIGNED BY ATC**

ATIS 124.4
CLNC DEL
127.6
GND CON
121.9
FAIRBANKS TOWER
118.3 257.8
FAIRBANKS DEP CON
125.35 363.2 (180°-359°)
126.5 381.4 (360°-179°)



TAKEOFF MINIMUMS

Rwys 2L, 20R: Standard with minimum climb of 500' per NM to 1200.

NOTE: GPS Required.

NOTE: RNAV-1.

NOTE: Expect to cross RDFLG at or below 17000 when Delta ATCAA is active.

NOTE: Chart not to scale.



DEPARTURE ROUTE DESCRIPTION

TAKEOFF RUNWAY 2L: Climb heading 020° to 1200, then right turn direct SKIMO, cross SKIMO at or above 3500, then on RDFLG transition.

TAKEOFF RUNWAY 20R: Climb heading 200° to 1200, then left turn direct SKIMO, cross SKIMO at or above 3500, then on RDFLG transition.

RDFLG TRANSITION (RDFLG2.RDFLG)