

WAAS CH 86702 W16A	APP CRS 163°	Rwy Idg TDZE Apt Elev	4601 16 16
--	------------------------	-----------------------------	---------------------------------------

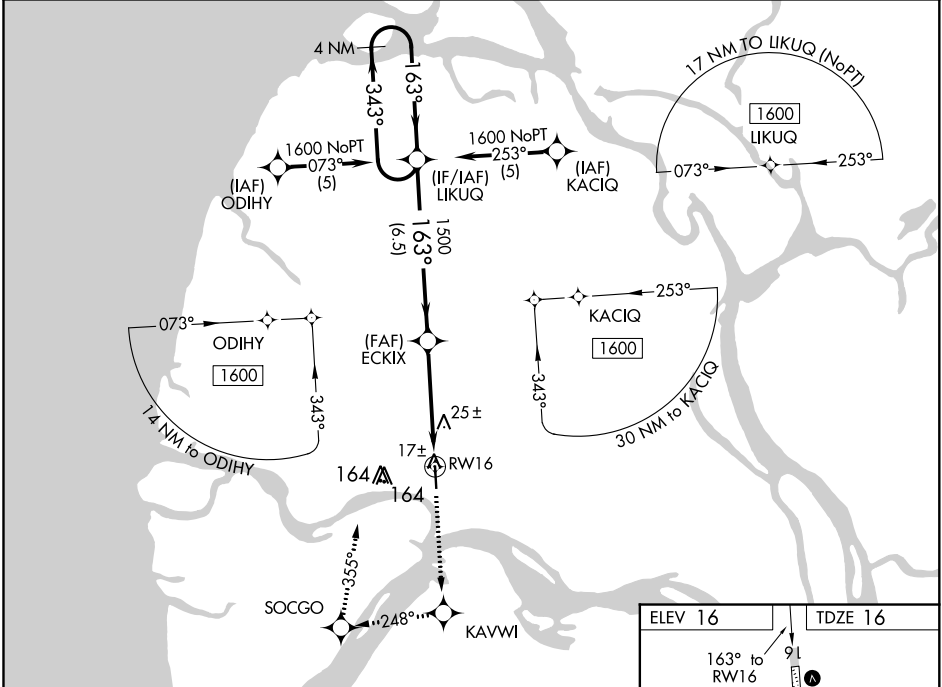
RNAV (GPS) RWY 16

EMMONAK (ENM) (PAEM)

⚠ If local altimeter setting not received, use St Mary's altimeter setting and increase all DAs 168 feet and all MDAs 180 feet. VDP NA with St Mary's altimeter setting. DME/DME RNP- 0.3 NA. Baro-VNAV NA when using St Mary's altimeter setting. For uncompensated Baro-VNAV systems, LNAV/VNAV NA below -25°C (-13°F) or above 48°C (119°F).

MISSED APPROACH: Climb to 1600 direct KAVWI and right turn via 248° track to SOCGO and right turn via 355° track to LIKUQ and hold.

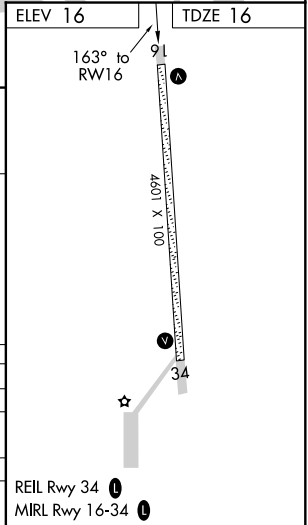
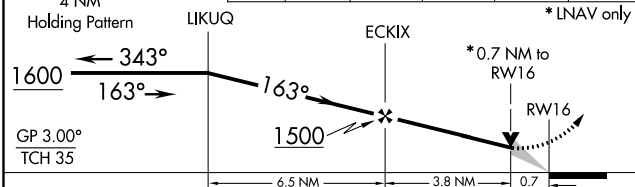
AWOS-3P 135.35	ANCHORAGE CENTER 124.5	CTAF 122.9
--------------------------	----------------------------------	----------------------



AK, 27 JAN 2022 to 24 MAR 2022

AK, 27 JAN 2022 to 24 MAR 2022

VGSI and RNAV glidepath not coincident (VGSI Angle 3.00/TCH 32).	1600	KAVWI	SOCGO	LIKUQ
	↑	✧	↻ fr 248°	↻ fr 355°



CATEGORY	A	B	C	D
LPV DA		266-1	250 (300-1)	
LNAV/ VNAV DA		280-1	264 (300-1)	
LNAV MDA		280-1	264 (300-1)	
CIRCLING	520-1	504 (600-1)	520-1½ 504 (600-1½)	580-2 564 (600-2)

WAAS CH 42502 W34A	APP CRS 343°	Rwy Idg TDZE Apt Elev	4601 16 16
--	------------------------	-----------------------------	---------------------------------------

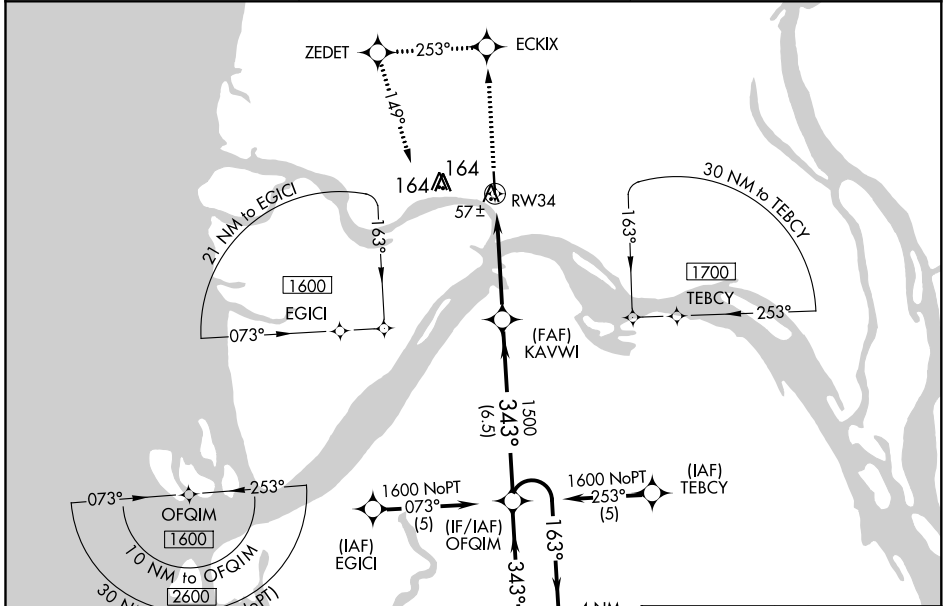
RNAV (GPS) RWY 34

EMMONAK (ENM) (PAEM)

⚠ If local altimeter setting not received, use St Mary's altimeter setting and increase all DAs 168 feet and MDAs 180 feet. VDP NA with St Mary's altimeter setting. DME/DME RNP-0.3 NA. Baro-VNAV NA when using St Mary's altimeter setting. For uncompensated Baro-VNAV systems, LNAV/VNAV NA below -25°C (-13°F) or above 48°C (119°F).

MISSED APPROACH: Climb to 1600 direct ECKIX and left turn via 253° track to ZEDET and left turn via 149° track to OFQIM and hold.

AWOS-3P 135.35	ANCHORAGE CENTER 124.5	CTAF 122.9 0
--------------------------	----------------------------------	-------------------------------

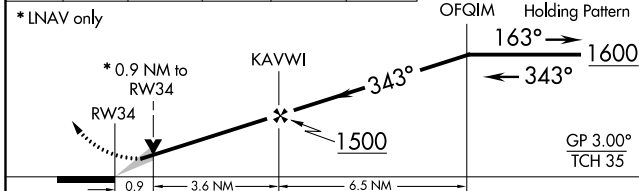


AK, 27 JAN 2022 to 24 MAR 2022

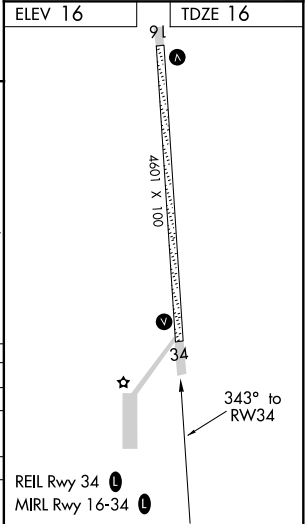
AK, 27 JAN 2022 to 24 MAR 2022

ELEV 16	TDZE 16
---------	---------

1600	ECKIX	ZEDET	OFQIM	VGSI and RNAV glidepath not coincident (VGSI Angle 3.00/TCH 32).
↑	✧	✧	✧	
	tr 253°	tr 149°		



CATEGORY	A	B	C	D
LPV DA		266-1	250 (300-1)	
LNAV/VNAV DA		320-1	304 (400-1)	
LNAV MDA		320-1	304 (400-1)	
CIRCLING	520-1	504 (600-1)	520-1½ 504 (600-1½)	580-2 564 (600-2)



VOR/DME ENM 117.8 Chan 125	APP CRS 159°	Rwy Idg TDZE Apt Elev	4601 16 16
--	------------------------	-----------------------------	---------------------------------------

VOR RWY 16

EMMONAK (ENM) (PAEM)



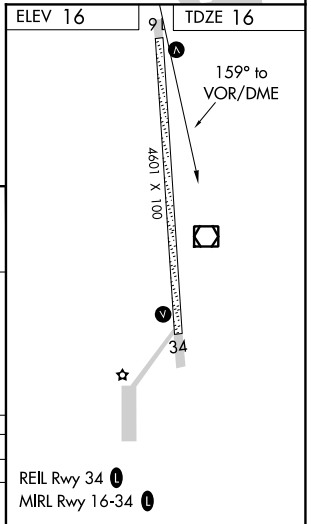
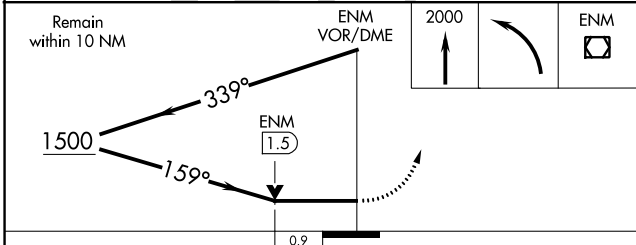
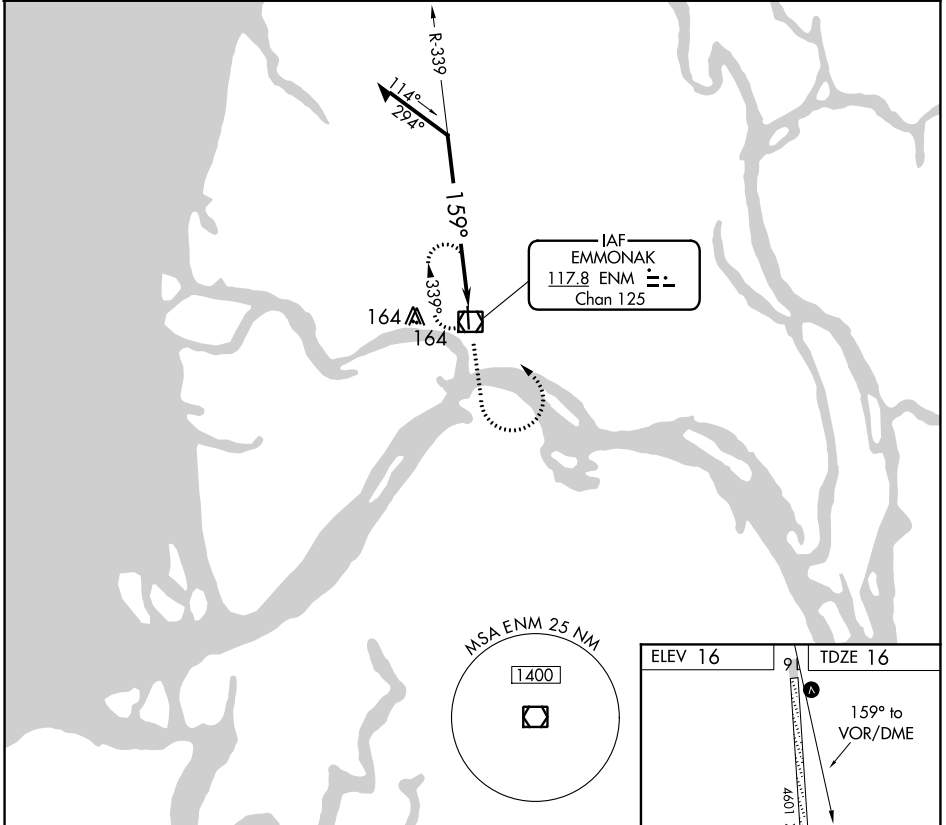
If local altimeter setting not received, use St. Mary's altimeter setting and increase all MDAs 180 feet.
VDP not authorized with St. Mary's altimeter setting.

MISSED APPROACH: Climb to 2000 then left turn direct ENM VOR/DME and hold.

AWOS-3P
135.35

ANCHORAGE CENTER
124.5

CTAF
122.90



CATEGORY	A	B	C	D
S-16	340-1 324 (400-1)			
CIRCLING	520-1 504 (600-1)	520-1½ 504 (600-1½)	580-2 564 (600-2)	

REIL Rwy 34
MIRL Rwy 16-34

AK, 27 JAN 2022 to 24 MAR 2022

AK, 27 JAN 2022 to 24 MAR 2022