

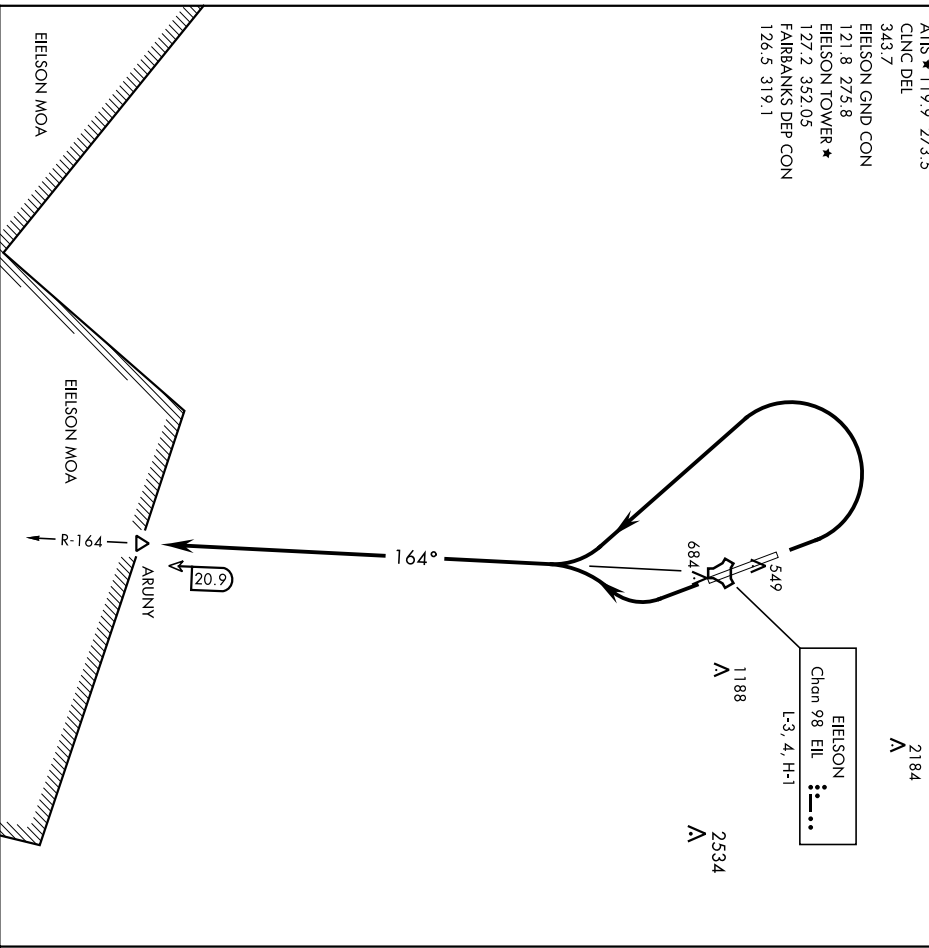
ARUNY TWO DEPARTURE

SI-1729 [USAF]

EIELSON AFB (PAEI)

FAIRBANKS, ALASKA

- ATIS ★ 119.9 273.5
- CINC DEL 343.7
- EIELSON GND CON 121.8 275.8
- EIELSON TOWER ★ 127.2 352.05
- FAIRBANKS DEP CON 126.5 319.1



DEPARTURE ROUTE DESCRIPTION

TAKE-OFF RWY 14 (ARUNY2-ARUNY): Turn right to intercept EIL TACAN R-164 to ARUNY.
 Maintain assigned altitude.

TAKE-OFF RWY 32 (ARUNY2-ARUNY): Turn left to intercept EIL TACAN R-164 to ARUNY.
 Maintain assigned altitude.

ARUNY TWO DEPARTURE

FAIRBANKS, ALASKA
EIELSON AFB (PAEI)

DELTA-FIVE DEPARTURE

SH-1729 [USAF]

EIELSON AFB (PAEI)

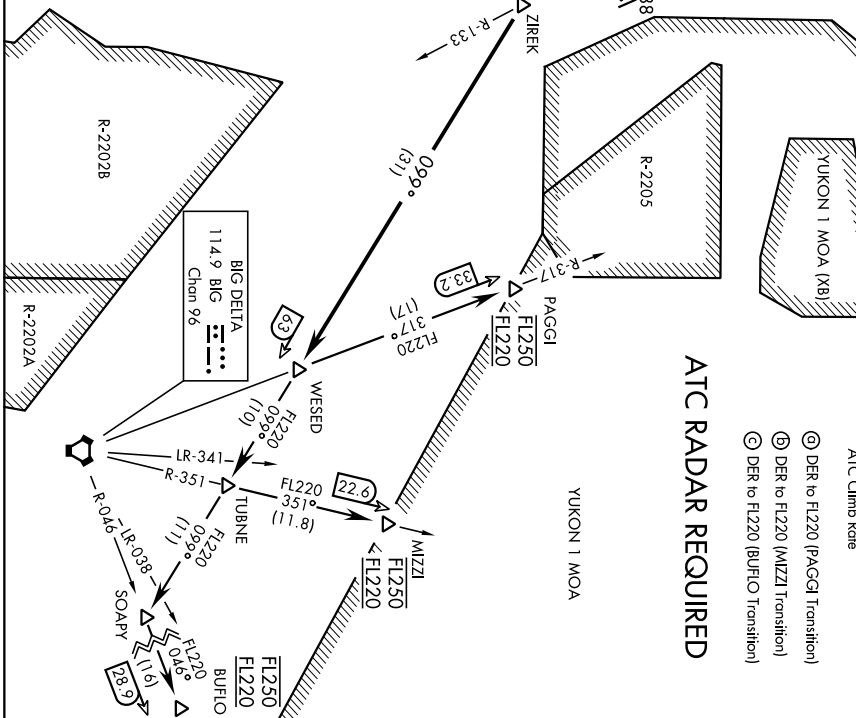
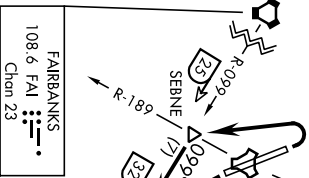
FAIRBANKS, ALASKA

YUKON 2 MOA	Rwy	Knots	60	120	180	240	300	360
4/320	V/Vflpm	456	912	1368	1824	2280	2736	
4/320	N/Vflpm	410	820	1230	1640	2040	2450	
4/320	N/Vflpm	300	600	900	1200	1500	1800	

ATC Climb Rate

ATIS * 119.9 273.5
CINC DEL
 343.7
EIELSON GND CON
 121.8 275.8
EIELSON TOWER *
 127.2 352.05
FAIRBANKS DEP CON
 126.5 319.1

EIELSON
 Chan 98 ELI...



ATC RADAR REQUIRED

- ⊙ DER to FL220 (PAGGI Transition)
- ⊕ DER to FL220 (MIZZI Transition)
- ⊗ DER to FL220 (BUFLIO Transition)

DEPARTURE ROUTE DESCRIPTION

- ▼ **TAKE-OFF RMY 14 (DELTA5; ZIREK):** Intercept ELI TACAN R-133 to join FAI VORTAC R-099 at ZIREK and track outbound. Thence...
- ▼ **TAKE-OFF RMY 32 (DELTA5; ZIREK):** Turn left to intercept FAI VORTAC R-099 at SENBE. Proceed outbound direct ZIREK. Thence...
- ▼ **BUFLIO GATE TRANSITION (DELTA5; BUFLIO):** Turn left at SOAPY and track outbound on BIG VORTAC R-046 to BUFLIO. Cross BUFLIO at FL220 block FL250.
- ▼ **MIZZI GATE TRANSITION (DELTA5; MIZZI):** Turn left at TUBNE and track outbound on BIG VORTAC R-351 to MIZZI. Cross MIZZI at FL220 block FL250.
- ▼ **PAGGI GATE TRANSITION (DELTA5; PAGGI):** Turn left at WESED and track outbound on BIG VORTAC R-317 to PAGGI. Cross PAGGI at FL220 block FL250.

DELTA-FIVE DEPARTURE

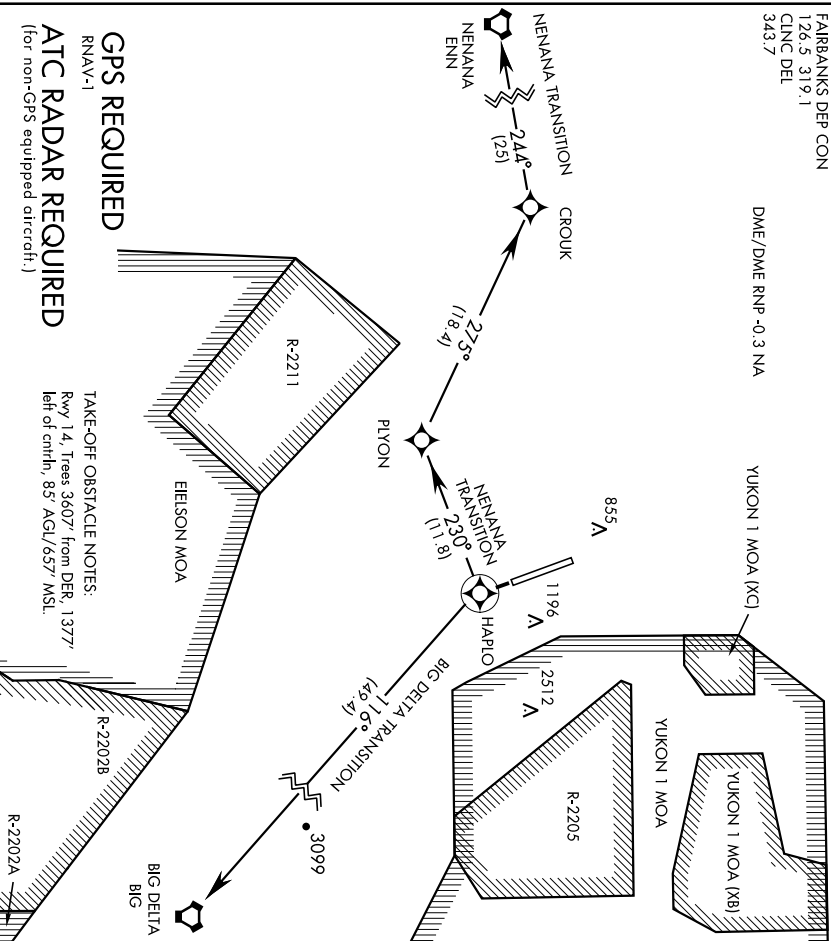
FAIRBANKS, ALASKA
 EIELSON AFB (PAEI)

HAPLO THREE DEPARTURE (RNAV) (HAPLO3.HAPLO)

EIELSON AFB (PAEI)
FAIRBANKS, ALASKA

SL-1729 [USAF]

ATIS ★
 119.9 273.5
 EIELSON GND CON
 121.8 275.8
 EIELSON TOWER ★
 127.2 352.05
 FAIRBANKS DEP CON
 126.5 319.1
 CLNC DEL
 343.7



GPS REQUIRED

RNAV-1

ATC RADAR REQUIRED

(for non-GPS equipped aircraft.)

TAKE-OFF OBSTACLE NOTES:
 Rwy 14, Trees 3607' from DER, 1377'
 left of center, 85' AGL/657' MSL.

DEPARTURE ROUTE DESCRIPTION

TAKE-OFF Rwy 14 (HAPLO3.HAPLO): Climb direct HAPLO, thence...

BIG DELTA TRANSITION (HAPLO3.BIG): Turn left, track 116° to BIG VORTAC.

NENANA TRANSITION (HAPLO3.ENN): Turn right, track 230° to PLYON then track 275° to CROUK, then track 244° to ENN VORTAC.

HAPLO THREE DEPARTURE (RNAV) (HAPLO3.HAPLO)

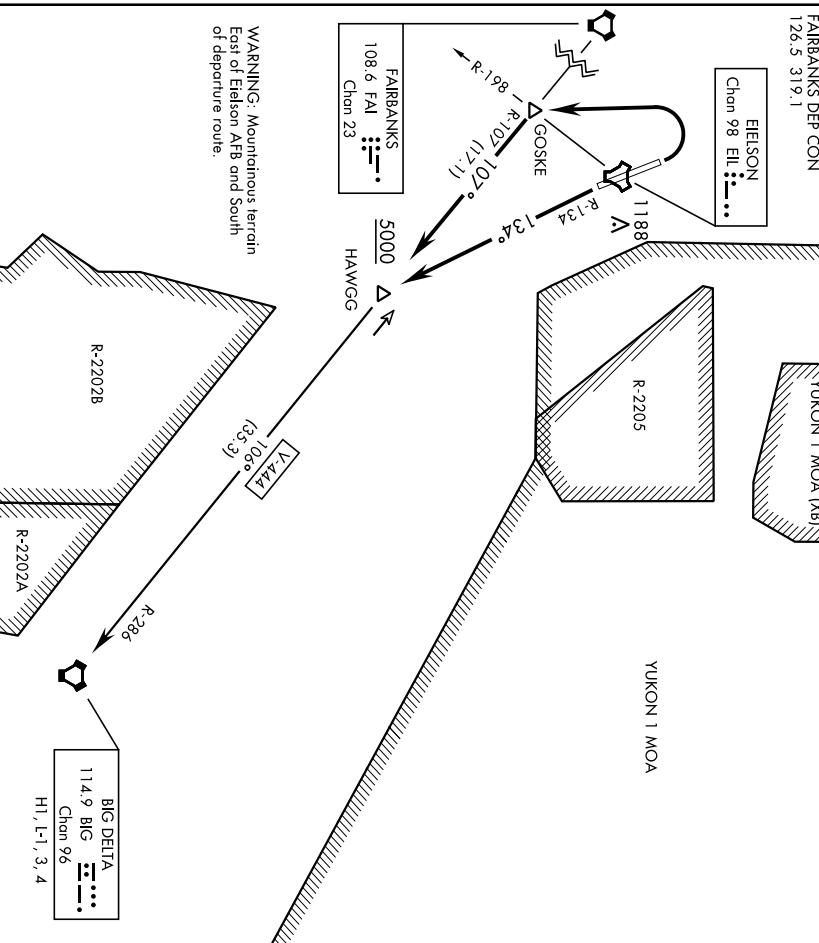
Orig 13SEP18

FAIRBANKS, ALASKA
EIELSON AFB (PAEI)

HAWGG SIX DEPARTURE (HAWGG6•HAWGG) SHL-1729 [USAF] FAIRBANKS, ALASKA

ATIS	* 119.9	273.5	YUKON 2 MOA	ATIS	CLimb Rate to 5000
CINC	DEI			Rwy	Knots
343.7	EIELSON GND CON		1.4	V/V [fpm]	60
121.8 275.8	EIELSON TOWER*			250	490
127.2 352.05	FAIRBANKS DEP CON			730	970
126.5 319.1				970	1210
					1450

ATC RADAR REQUIRED



TAKE-OFF RWY 1.4: Turn left to join ELI TACAN R-134 to FAI VORTAC R-107. Cross HAWGG at or above 5000. Thence . . .

TAKE-OFF RWY 32: Turn left to GOSKE then continue outbound FAI VORTAC R-107 to HAWGG. Cross HAWGG at or above 5000. Thence . . .

Intercept V-444 to BIG VORTAC, thence via assigned route.

HAWGG SIX DEPARTURE (HAWGG6•HAWGG)

18256

JEWELL ONE DEPARTURE (RNAV) (JEWLL1 .JEWLL)

EISELSON AFB (PAEI)
FAIRBANKS, ALASKA

SL-1729 [USAF]

ATIS ★
119.9 273.5
EISELSON GND CON
121.8 275.8
EISELSON TOWER ★
127.2 352.05
FAIRBANKS DEP CON
126.5 319.1
CINC DEL
343.7

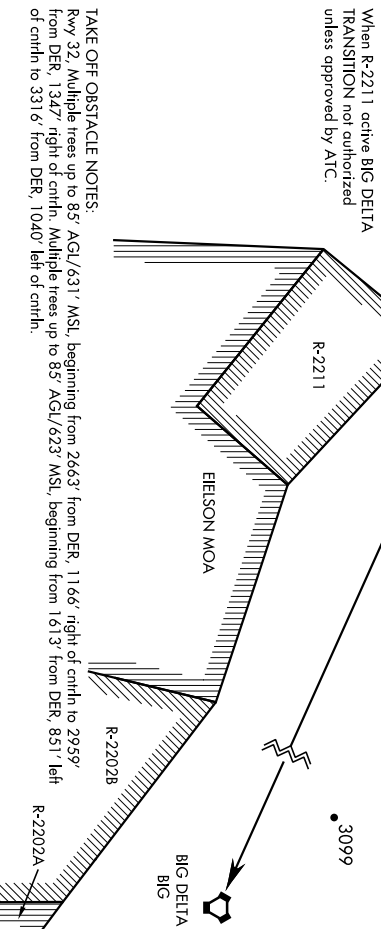
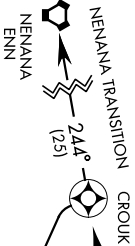
DME/DME RNP -0.3 NA

ATC RADAR REQUIRED

(for non-GPS equipped aircraft.)

GPS REQUIRED

RNAV-1



TAKE OFF OBSTACLE NOTES:
Rwy 32, Multiple trees up to 85' AGL/631' MSL, beginning from DER, 1166', right of cntrl to 2959'
from DER, 1347', right of cntrl. Multiple trees up to 85' AGL/623' MSL, beginning from 1613' from DER, 851' left
of cntrl to 3316' from DER, 1040' left of cntrl.

DEPARTURE ROUTE DESCRIPTION

▼ TAKE-OFF RWY 32 (JEWLL1 .JEWLL): Climb direct JEWLL, thence...

BIG DELTA TRANSITION (JEWLL1 .BIG): Turn left, track 238° to CROUK then turn left,
track 102° direct to BIG VORTAC.

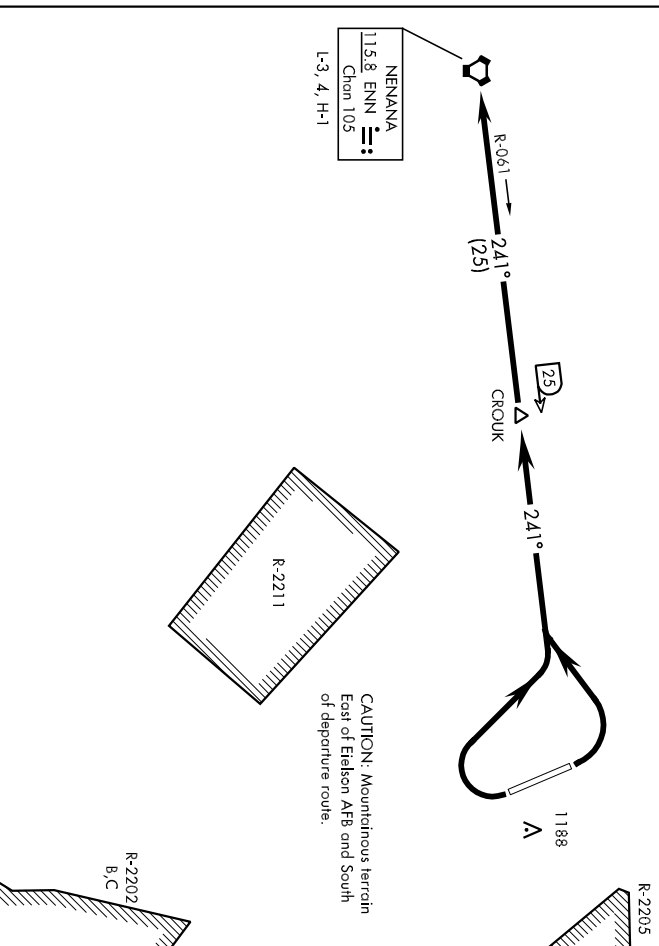
NENANA TRANSITION (JEWLL1 .ENN): Turn left, track 238° to CROUK then track 244°
to ENN VORTAC.

JEWELL ONE DEPARTURE (RNAV) (JEWLL1 .JEWLL)

Orig 13SEP18

FAIRBANKS, ALASKA
EISELSON AFB (PAEI)

ATIS ★ 119.9 273.5
CINC DEL
343.7
EIELSON GND CON
121.8 275.8
EIELSON TOWER ★
127.2 352.05
FAIRBANKS DEP CON
126.5 319.1



▼ DEPARTURE ROUTE DESCRIPTION

TAKE-OFF RWY 14: Turn right to intercept ENN VORTAC R-061 and climb to assigned altitude, thence . . .

TAKE-OFF RWY 32: Turn left to intercept ENN VORTAC R-061 and climb to assigned altitude, thence . . .

Proceed to NENANA via R-061 then via assigned route.

15064

WAPAX TWO DEPARTURE (WAPAX2 • WAPAX) SH-1729 (USAF)

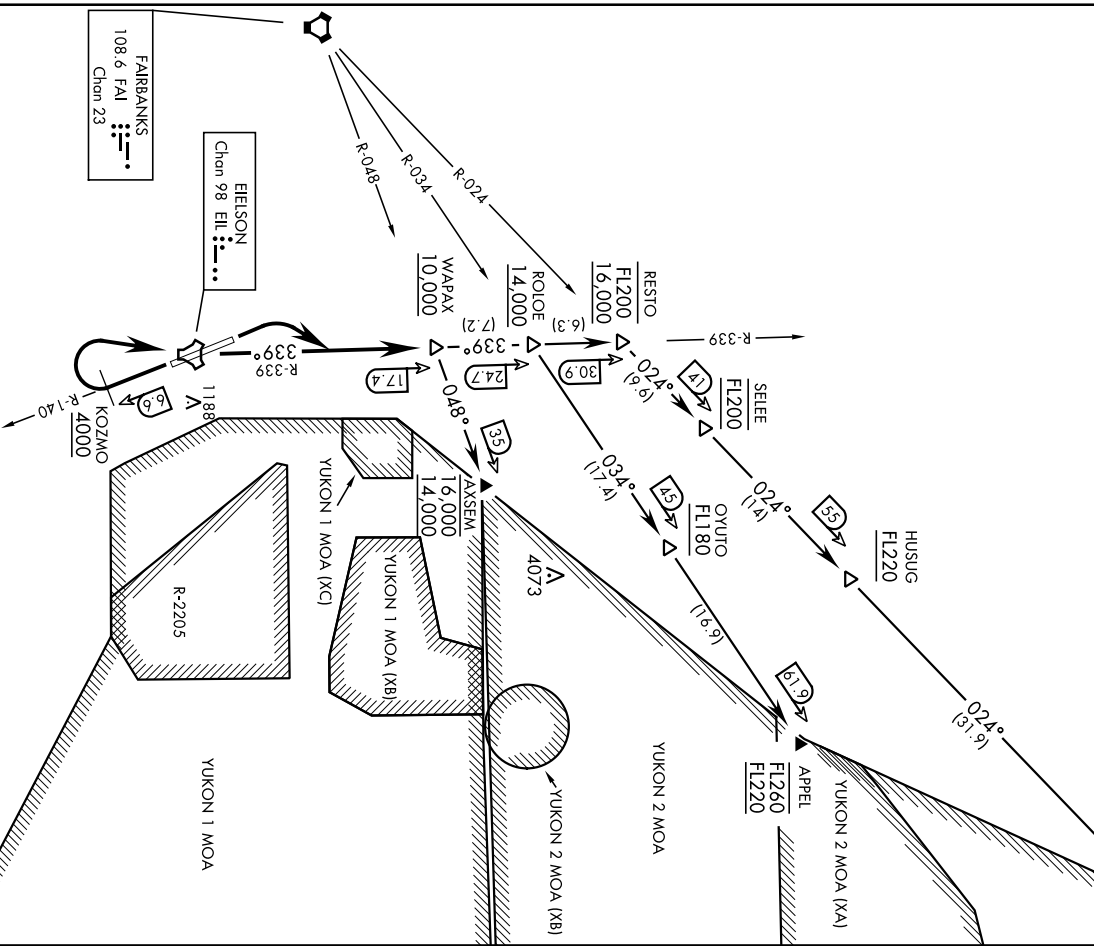
EIELSON AFB (PAEI)
FAIRBANKS, ALASKA

Alt	Rwy	Knots	120	180	240	300	360
14	ⓐ	V/Vl(fpm)	1126	1689	2252	2815	3378
32	ⓑ	V/Vl(fpm)	1224	1836	2448	3060	3672

ATC Climb Rate

ATIS * 119.9 273.5
CLNC DEL
343.7
EIELSON GND CON
121.8 275.8
EIELSON TOWER *
127.2 332.05
FAIRBANKS DEP CON
126.5 319.1

- ⓐ DER to 14,000 (AXSEM Transition)
- ⓑ DER to FL220 (APPEL Transition)
- ⓓ DER to FL200 (CABIN Transition)



AK, 13 SEP 2018 to 08 NOV 2018

AK, 13 SEP 2018 to 08 NOV 2018

ATC RADAR REQUIRED

(Continued on next page)

WAPAX TWO DEPARTURE (WAPAX2 • WAPAX)

FAIRBANKS, ALASKA
EIELSON AFB (PAEI)

15064

WAPAX TWO DEPARTURE (WAPAX2 • WAPAX)

EIELSON AFB (PAEI)

FAIRBANKS, ALASKA

SH-1729 [USAF]

DEPARTURE ROUTE DESCRIPTION

TAKE-OFF RWY 14: Turn right to intercept EIL TACAN R-140 to KOZMO. Cross KOZMO at or above 4000, then turn right direct EIL to intercept EIL R-339 outbound to WAPAX. Cross WAPAX at or above 10,000. Thence . . .

TAKE-OFF RWY 32: Turn right to intercept EIL TACAN R-339 to WAPAX. Cross WAPAX at or above 10,000. Thence . . .

APPEL GATE TRANSITION (WAPAX2.APPEL): Cross ROLOE at or above 14,000. Turn right track outbound on FAI VORTAC R-034 direct OYUTO, direct APPEL. Cross OYUTO at or above FL180, cross APPEL at or above FL220 block FL260.

AXSEM GATE TRANSITION (WAPAX2.AXSEM): Turn right and track outbound on FAI VORTAC R-048 to AXSEM. Cross AXSEM at or above 14,000 block 16,000.

CABIN GATE TRANSITION (WAPAX2.CABIN): Cross RESTO at or above 16,000 block FL200. Turn right and track outbound on FAI VORTAC R-024 direct SELEE, direct HUSUG, direct CABIN. Cross SELEE at FL200, cross HUSUG at or above FL220, cross CABIN at or above FL220 block FL260.

AK, 13 SEP 2018 to 08 NOV 2018

AK, 13 SEP 2018 to 08 NOV 2018

WAPAX TWO DEPARTURE (WAPAX2 • WAPAX)

FAIRBANKS, ALASKA
EIELSON AFB (PAEI)