

(CASEL7.CASEL) 18088

# CASEL SEVEN DEPARTURE

AL-1195 (FAA)

MERLE K (MUDHOLE) SMITH (CDV)(PACV)

CORDOVA, ALASKA

ANCHORAGE CENTER  
119.3 133.6 269.4  
JUNEAU RADIO  
122.2 123.6 (CTAF)  
ASOS 134.8

**TOP ALTITUDE:  
ASSIGNED BY ATC**

JOHNSTONE POINT  
116.7 JOH  
Chan 114

GLACIER RIVER  
404 GCR

ORCA BAY  
233 ALJ

MIDDLETON ISLAND  
115.3 MDO  
Chan 100

CASEL  
N60°19.87'  
W145°17.90'  
L-1-3-4, H-1

CORVA  
N60°16.94'  
W145°14.86'  
L-1-3-4

WEVIN  
N60°08.50'  
W145°06.12'  
L-1-3

HUMPY  
N60°07.11'  
W145°00.24'  
H-1

**TAKEOFF MINIMUMS**  
Rwys 16, 34: NA - ATC  
Rwys 9, 27: Standard.

NOTE: Do not exceed 210K until established  
on 135° bearing from GCR NDB.  
NOTE: ADF required.

NOTE: Chart not to scale.



## DEPARTURE ROUTE DESCRIPTION

**TAKEOFF RUNWAY 9:** Climbing right turn to intercept bearing 135° from GCR NDB to CASEL INT, Thence. . . .

**TAKEOFF RUNWAY 27:** Climbing left turn to intercept bearing 135° from GCR NDB to CASEL INT, Thence. . . .

. . . .on assigned route, maintain ATC assigned altitude.

# CASEL SEVEN DEPARTURE

(CASEL7.CASEL) 29MAR18

CORDOVA, ALASKA

MERLE K (MUDHOLE) SMITH (CDV)(PACV)

AK, 31 DEC 2020 to 25 FEB 2021

AK, 31 DEC 2020 to 25 FEB 2021

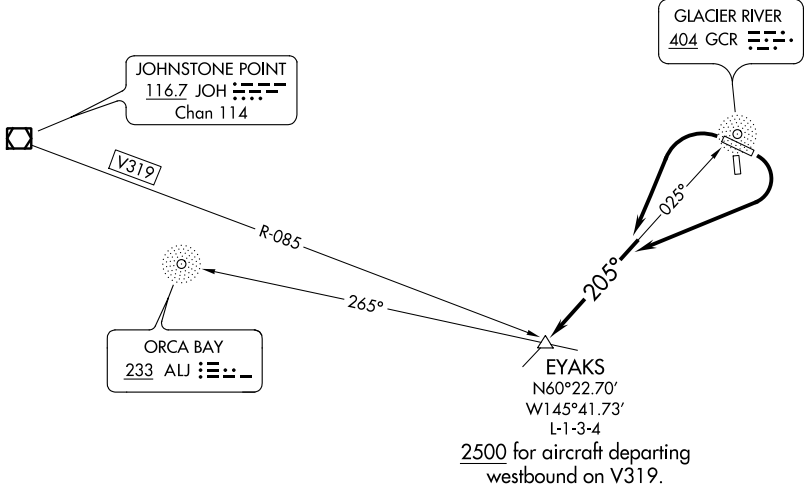
(EYAKS6.EYAKS) 18088

# EYAKS SIX DEPARTURE

AL-1195 (FAA) MERLE K (MUDHOLE) SMITH (CDV)(PACV)  
CORDOVA, ALASKA

ANCHORAGE CENTER  
119.3 133.6 269.4  
JUNEAU RADIO  
122.2 123.6 (CTAF)  
ASOS  
134.8

**TOP ALTITUDE:  
ASSIGNED BY ATC**



**TAKEOFF MINIMUMS**  
Rwys 16, 34: NA-ATC.  
Rwys 9, 27: Standard.

NOTE: Do not exceed 210K until established on 205° bearing from GCR NDB.  
NOTE: ADF required.

NOTE: Chart not to scale.

## DEPARTURE ROUTE DESCRIPTION

**TAKEOFF RUNWAY 9:** Climbing right turn to intercept bearing 205° from GCR NDB to EYAKS INT, thence. . . .

**TAKEOFF RUNWAY 27:** Climbing left turn to intercept bearing 205° from GCR NDB to EYAKS INT, thence. . . .

. . . .on assigned route, maintain ATC assigned altitude.

**EYAKS SIX DEPARTURE**  
(EYAKS6.EYAKS) 29MARI8

CORDOVA, ALASKA  
MERLE K (MUDHOLE) SMITH (CDV)(PACV)

AK, 31 DEC 2020 to 25 FEB 2021

AK, 31 DEC 2020 to 25 FEB 2021