

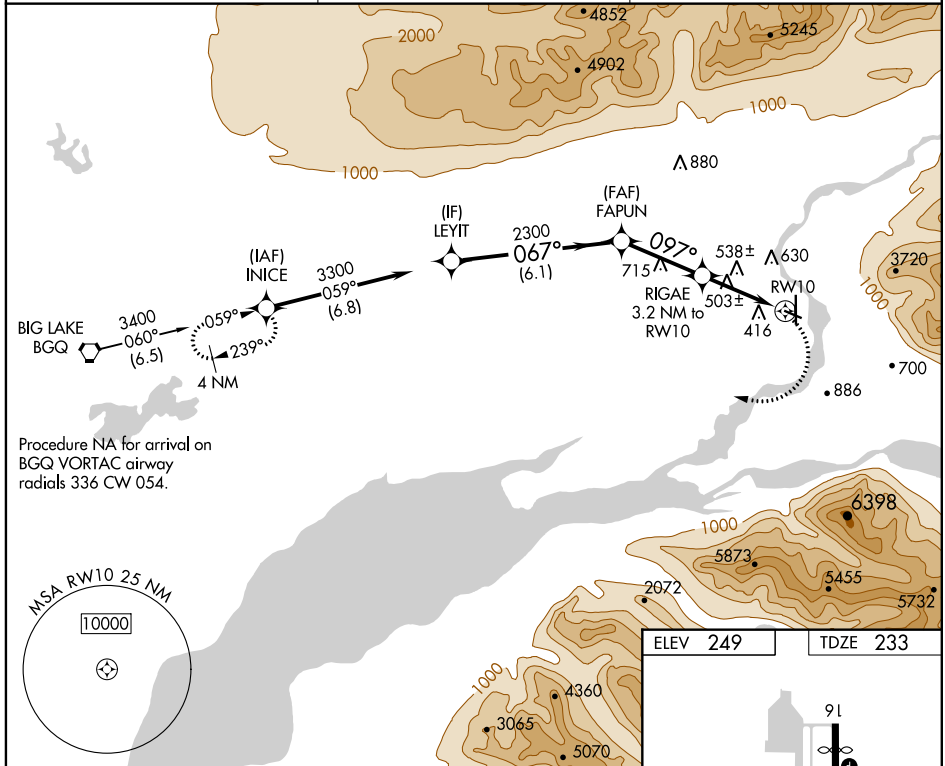
WAAS CH 40425 W10A	APP CRS 097°	Rwy Idg TDZE Apt Elev	3616 233 249
--	------------------------	-----------------------------	---

RNAV (GPS) RWY 10

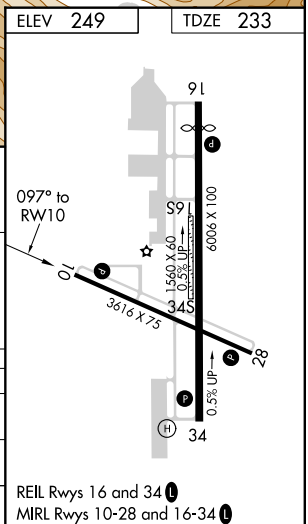
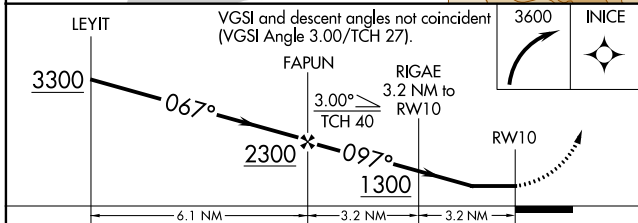
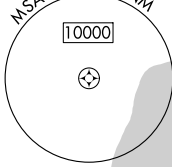
WARREN "BUD" WOODS PALMER MUNI (PAQ) (PAAQ)

RNP APCH.	MISSED APPROACH: (Do not exceed 185K until INICE) Climbing right turn to 3600 direct INICE and hold.
<p>⚠ Circling NA northeast of Rwy 16-28. Procedure NA at night. Rwy 10 helicopter visibility reduction below 1 SM NA.</p>	

ASOS 134.75	ANCHORAGE APP CON 118.6 290.5	PALMER RADIO 123.6 (CTAF) 122.4
-----------------------	---	---



Procedure NA for arrival on BGQ VORTAC airway radials 336 CW 054.



CATEGORY	A	B	C	D
LP MDA	760-1	527 (600-1)	760-1½	527 (600-1½)
LNNAV MDA	820-1	587 (600-1)	820-1⅝	587 (600-1⅝)
CIRCLING	860-1 611 (700-1)	940-1 691 (700-1)	1300-3	1051 (1100-3)

REIL Rwy 16 and 34
MIRL Rwy 10-28 and 16-34

RNAV (GPS) RWY 10

AK, 21 MAY 2020 to 16 JUL 2020

AK, 21 MAY 2020 to 16 JUL 2020

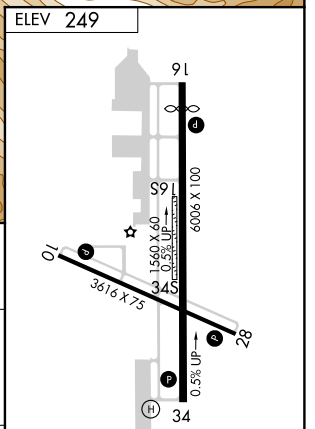
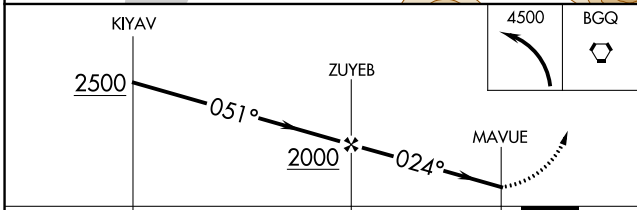
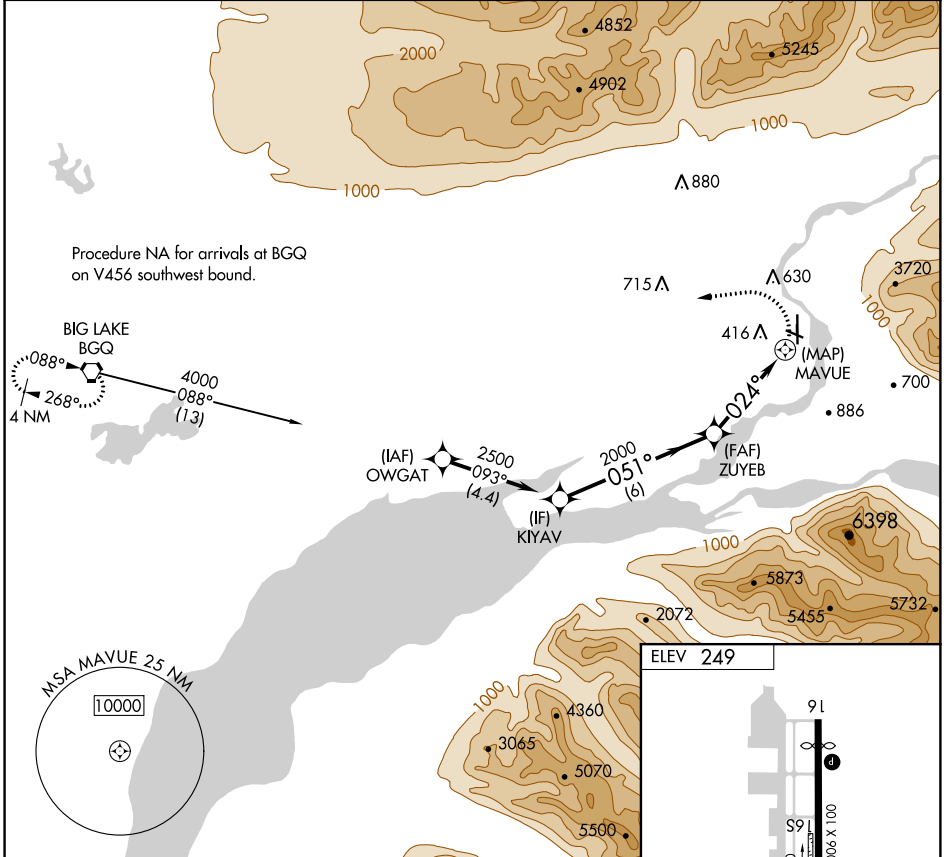
APP CRS 024°	Rwy Idg TDZE Apt Elev	N/A N/A 249
------------------------	-----------------------------	--

RNAV (GPS)-A

WARREN "BUD" WOODS PALMER MUNI (PAQ) (PAAQ)

RNP APCH.	MISSED APPROACH: Climbing left turn to 4500 direct BGQ VORTAC and hold.
<p>▼ Circling NA northeast of Rwy 16-28. ▲ Procedure NA at night.</p>	

ASOS 134.75	ANCHORAGE APP CON 118.6 290.5	PALMER RADIO 123.6 (CTAF) 0 122.4
-----------------------	---	---



CATEGORY	A	B	C	D
CIRCLING	860-1¼ 611 (700-1¼)	940-1¼ 691 (700-1¼)	1300-3	1051 (1100-3)

REIL Rwy 16 and 34
 MIRL Rwy 10-28 and 16-34

RNAV (GPS)-A

AK, 21 MAY 2020 to 16 JUL 2020

AK, 21 MAY 2020 to 16 JUL 2020