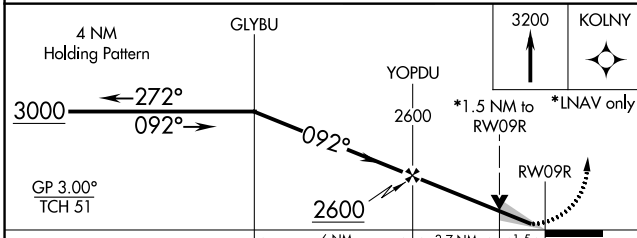
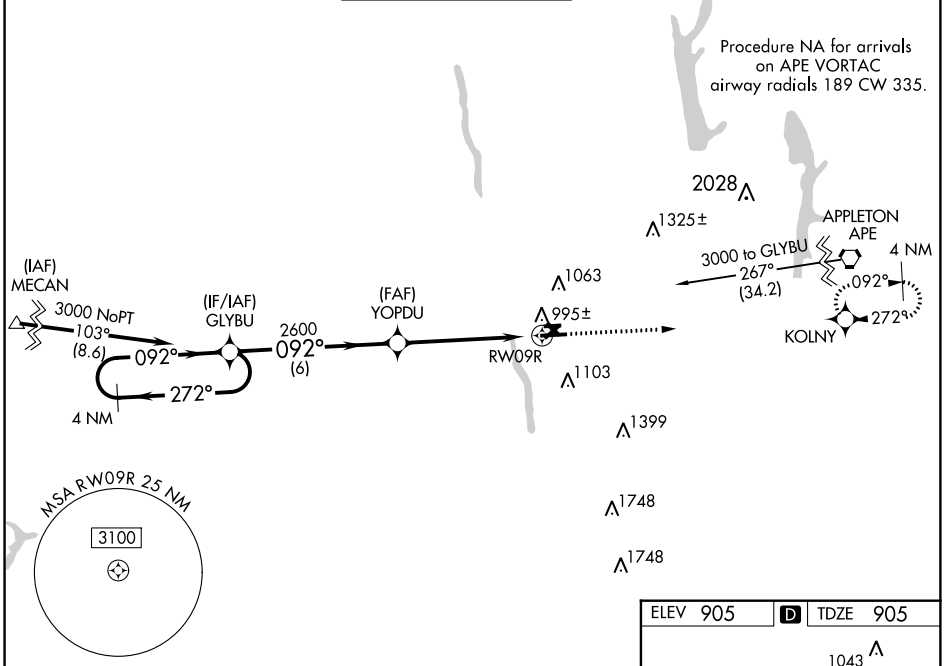


WAAS CH 86420 W09A	APP CRS 092°	Rwy Idg TDZE Apt Elev	5004 905 905
--	------------------------	-----------------------------	---

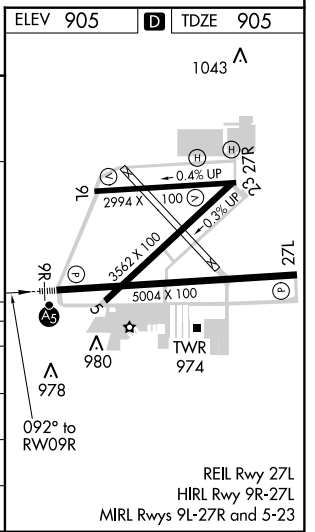
RNAV (GPS) RWY 9R

OHIO STATE UNIVERSITY (OSU)

<p>⚠ Baro-VNAV NA when using Port Columbus altimeter setting. For uncompensated Baro-VNAV systems, LNAV/VNAV NA below -16°C (4°F) or above 38°C (100°F). DME/DME RNP-0.3 NA. VDP NA with Port Columbus altimeter setting. When local altimeter setting not received, use Port Columbus altimeter setting and increase all DA 35 feet and all MDA 40 feet. Increase LNAV Cat C/D visibility ½ mile.</p>				<p>MALSR </p>		<p>MISSED APPROACH: Climb to 3200 direct KOLNY and hold.</p>	
ATIS 121.35	COLUMBUS APP CON 125.95 317.775	STATE TOWER ★ 118.8 (CTAF) 0 254.325	GND CON 121.7	CLNC DEL 121.7	UNICOM 122.95		



CATEGORY	A	B	C	D
LPV DA		1105-½	200 (200-½)	
LNAV/VNAV DA		1168-½	263 (300-½)	
LNAV MDA	1420-½	515 (600-½)	1420-1	515 (600-1)
CIRCLING	1420-1	515 (600-1)	1420-1 ½	1460-2
			515 (600-1 ½)	555 (600-2)



REIL Rwy 27L
HIRL Rwy 9R-27L
MIRL Rwys 9L-27R and 5-23

EC-2: 26 APR 2018 to 24 MAY 2018

EC-2: 26 APR 2018 to 24 MAY 2018