

LOM OS 515	APP CRS 093°	Rwy Idg 5004 TDZE 905 Apt Elev 905
----------------------	------------------------	---

NDB RWY 9R

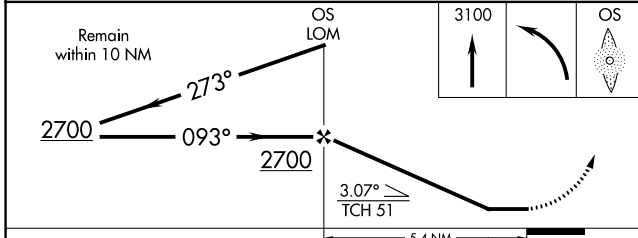
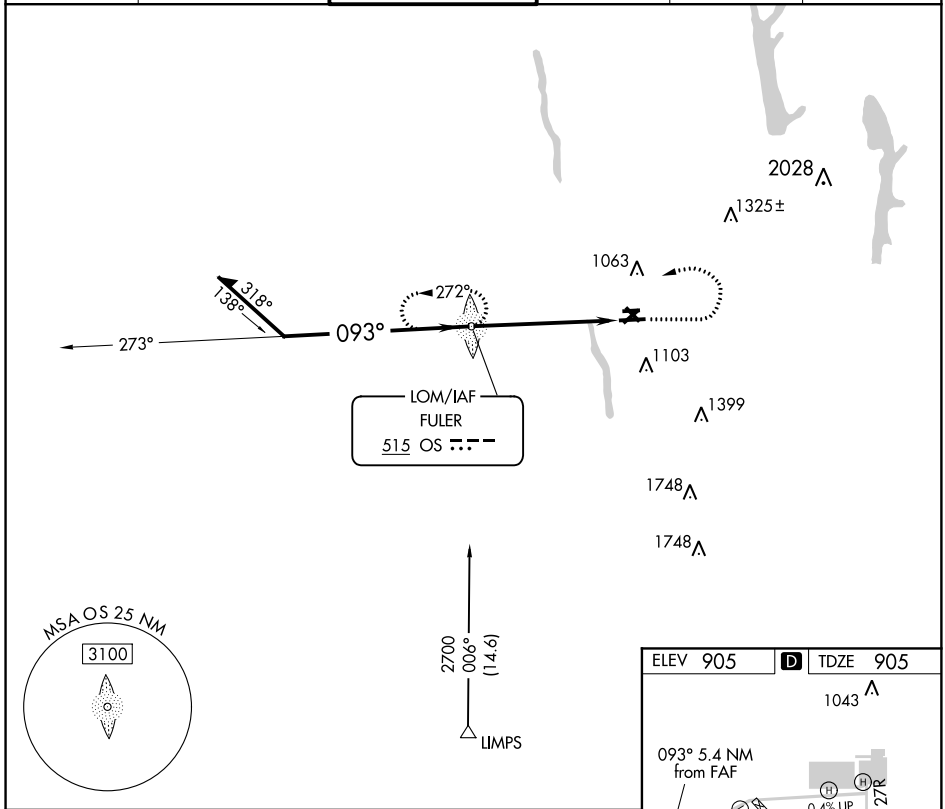
OHIO STATE UNIVERSITY (OSU)

⚠ When local altimeter setting not received, use Port Columbus altimeter setting and increase all MDA 40 feet. Increase S-9R Cat C/D and Circling Cat C visibility 1/8 mile.

MALSR

MISSED APPROACH: Climb to 3100 then left turn direct OS LOM and hold.

ATIS 121.35	COLUMBUS APP CON 125.95 317.775	STATE TOWER* 118.8 (CTAF) 254.325	GND CON 121.7	CLNC DEL 121.7	UNICOM 122.95
-----------------------	---	---	-------------------------	--------------------------	-------------------------



ELEV 905	D	TDZE 905
----------	----------	----------

REIL Rwy 27L
HIRL Rwy 9R-27L
MIRL Rwys 9L-27R and 5-23

FAF to MAP 5.4 NM

Knots	60	90	120	150	180
Min:Sec	5:24	3:36	2:42	2:10	1:48

CATEGORY	A	B	C	D
S-9R	1460-3/4 555 (600-3/4)		1460-1 1/8 555 (600-1 1/8)	
CIRCLING	1460-1 555 (600-1)		1460-1 5/8 555 (600-1 5/8)	1460-2 555 (600-2)

EC-2. 01 FEB 2018 to 01 MAR 2018

EC-2. 01 FEB 2018 to 01 MAR 2018