

WAAS CH 58125 W25A	APP CRS 253°	Rwy Idg TDZE Apt Elev	6004 113 113
--	------------------------	-----------------------------	---

RNAV (GPS) RWY 25

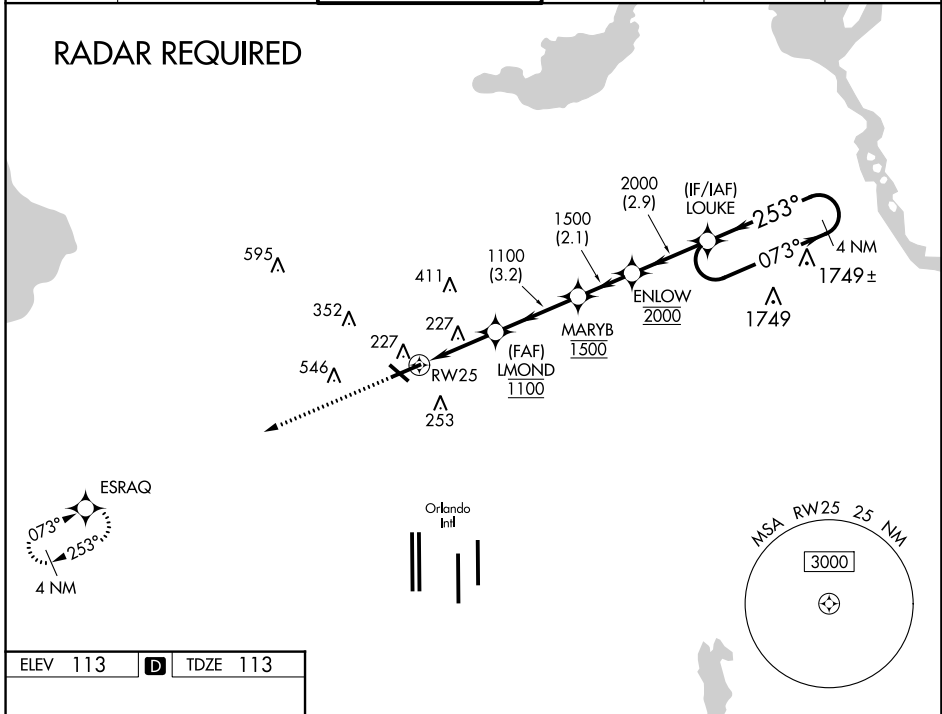
EXECUTIVE (ORL)

⚠ For uncompensated Baro-VNAV systems, LNAV/VNAV NA below 2°C (36°F) or above 54°C (130°F). Circling Rwy 31 NA at night. DME/DME RNP-0.3 NA. In minimum visibility conditions, bright lights on highway ½ mile south of airport may be mistaken for runway lights.

MISSED APPROACH:
Climb to 2000 direct ESRAQ and hold.

ATIS 127.25	ORLANDO APP CON 124.8 351.9	EXECUTIVE TOWER * 118.7(CTAF) 0 239.0	GND CON 121.4 239.0	CLNC DEL 128.45	UNICOM 122.95
-----------------------	---------------------------------------	---	-------------------------------	---------------------------	-------------------------

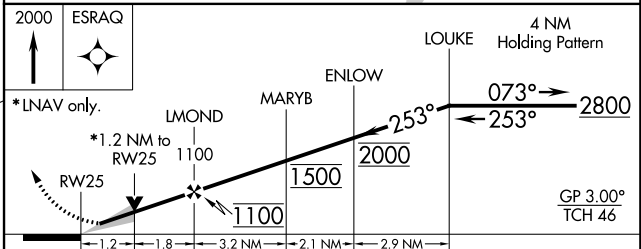
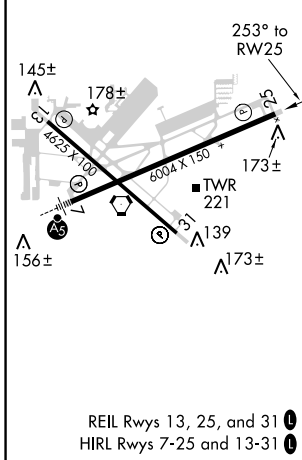
RADAR REQUIRED



SE-3, 29 MAR 2018 to 26 APR 2018

SE-3, 29 MAR 2018 to 26 APR 2018

ELEV 113	D	TDZE 113
----------	----------	----------



CATEGORY	A	B	C	D
LPV DA		313-3/4	200 (200-3/4)	
LNAV/VNAV DA		371-7/8	258 (300-7/8)	
LNAV MDA	540-1	427 (500-1)	540-1/4	427 (500-1/4)
C CIRCLING	580-1 467 (500-1)	680-1 567 (600-1)	860-2/4 747 (800-2/4)	860-2/2 747 (800-2/2)