

WAAS CH 70729 W07A	APP CRS 073°	Rwy Idg 5704 TDZE 109 Apt Elev 113
--	------------------------	---

RNAV (GPS) RWY 7

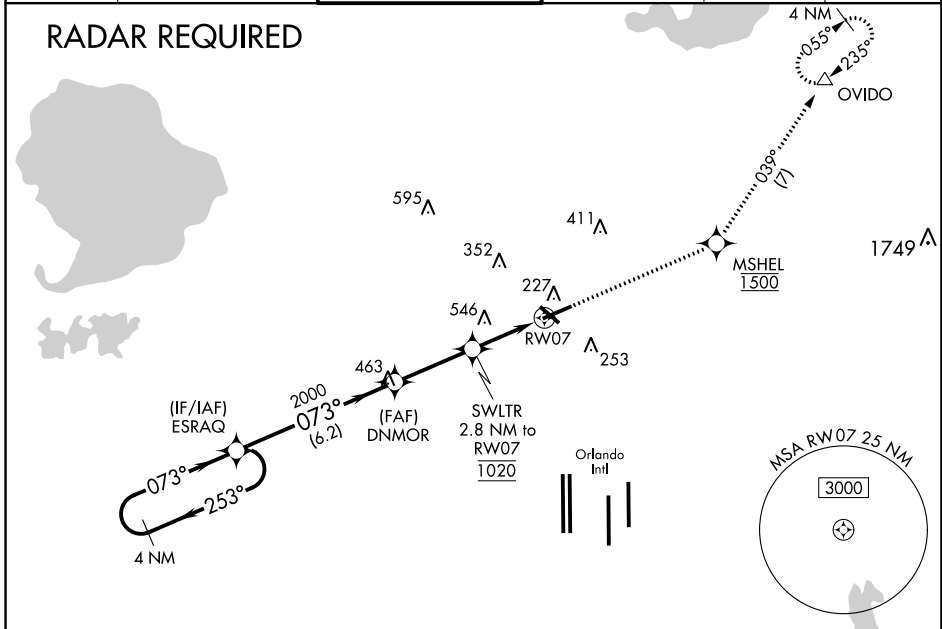
EXECUTIVE (ORL)

▼ For uncompensated Baro-VNAV systems, LNAV/VNAV NA below 2°C (36°F) or above 54°C (130°F). Circling Rwy 31 NA at night. DME/DME RNP-0.3 NA. For inop MALSR, increase LNAV Cats C/D visibility to 1¾. In minimum visibility conditions, bright lights on highway ½ mile south of airport may be mistaken for runway lights. **RVR 1800 authorized with use of FD or AP or HUD to DA.

MALSR
MISSED APPROACH: Climb to 1500 direct MSHEL, cross MSHEL at 1500, then climb to 1600 on track 039° to OVIDO and hold.

ATIS 127.25	ORLANDO APP CON 124.8 351.9	EXECUTIVE TOWER * 118.7 (CTAF) 0 239.0	GND CON 121.4 239.0	CLNC DEL 128.45	UNICOM 122.95
-----------------------	---------------------------------------	--	-------------------------------	---------------------------	-------------------------

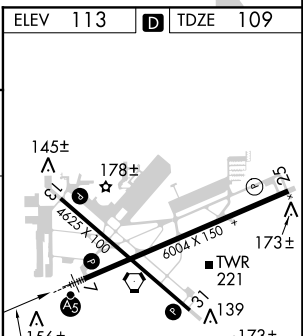
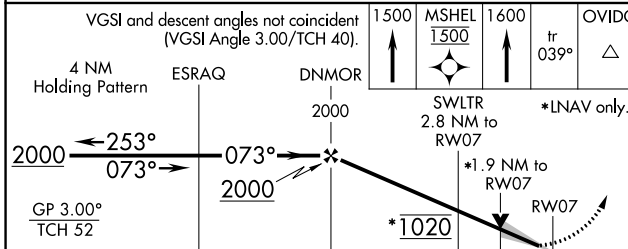
RADAR REQUIRED



SE-3: 01 FEB 2018 to 01 MAR 2018

SE-3: 01 FEB 2018 to 01 MAR 2018

ELEV 113	TDZE 109
----------	----------



CATEGORY	A	B	C	D
LPV DA	**309/24 200 (200-½)			
LNAV/VNAV DA	447/30 338 (400-¾)			
LNAV MDA	740/24	631 (700-½)	740-1⅜	631 (700-1⅜)
CIRCLING	740-1	627 (700-1)	860-2¼ 747 (800-2¼)	860-2½ 747 (800-2½)

REIL Rws 13, 25 and 31
HIRL Rws 7-25 and 13-31