

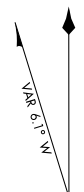
AIRPORT DIAGRAM

AL-305 (FAA)

EXECUTIVE (ORL)
ORLANDO, FLORIDA

ATIS
 127.25
 EXECUTIVE TOWER*
 118.7 239.0
 GND CON
 121.4 239.0
 CLNC DEL
 128.45

D

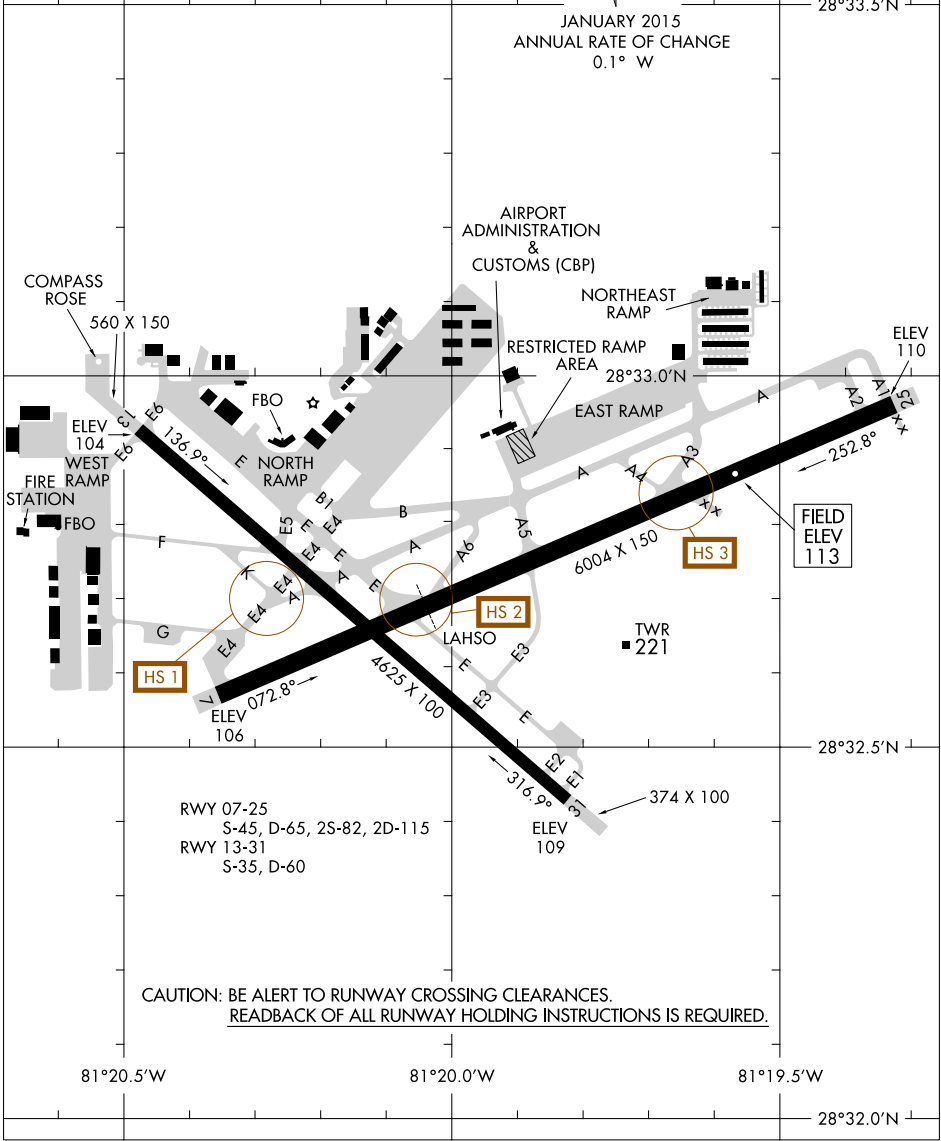


JANUARY 2015
 ANNUAL RATE OF CHANGE
 0.1° W

28°33.5'N

SE-3, 01 MAR 2018 to 29 MAR 2018

SE-3, 01 MAR 2018 to 29 MAR 2018



RWY 07-25
 S-45, D-65, 2S-82, 2D-115
 RWY 13-31
 S-35, D-60

CAUTION: BE ALERT TO RUNWAY CROSSING CLEARANCES.
 READBACK OF ALL RUNWAY HOLDING INSTRUCTIONS IS REQUIRED.

81°20.5'W

81°20.0'W

81°19.5'W

28°32.5'N

28°32.0'N

AIRPORT DIAGRAM

ORLANDO, FLORIDA
EXECUTIVE (ORL)