

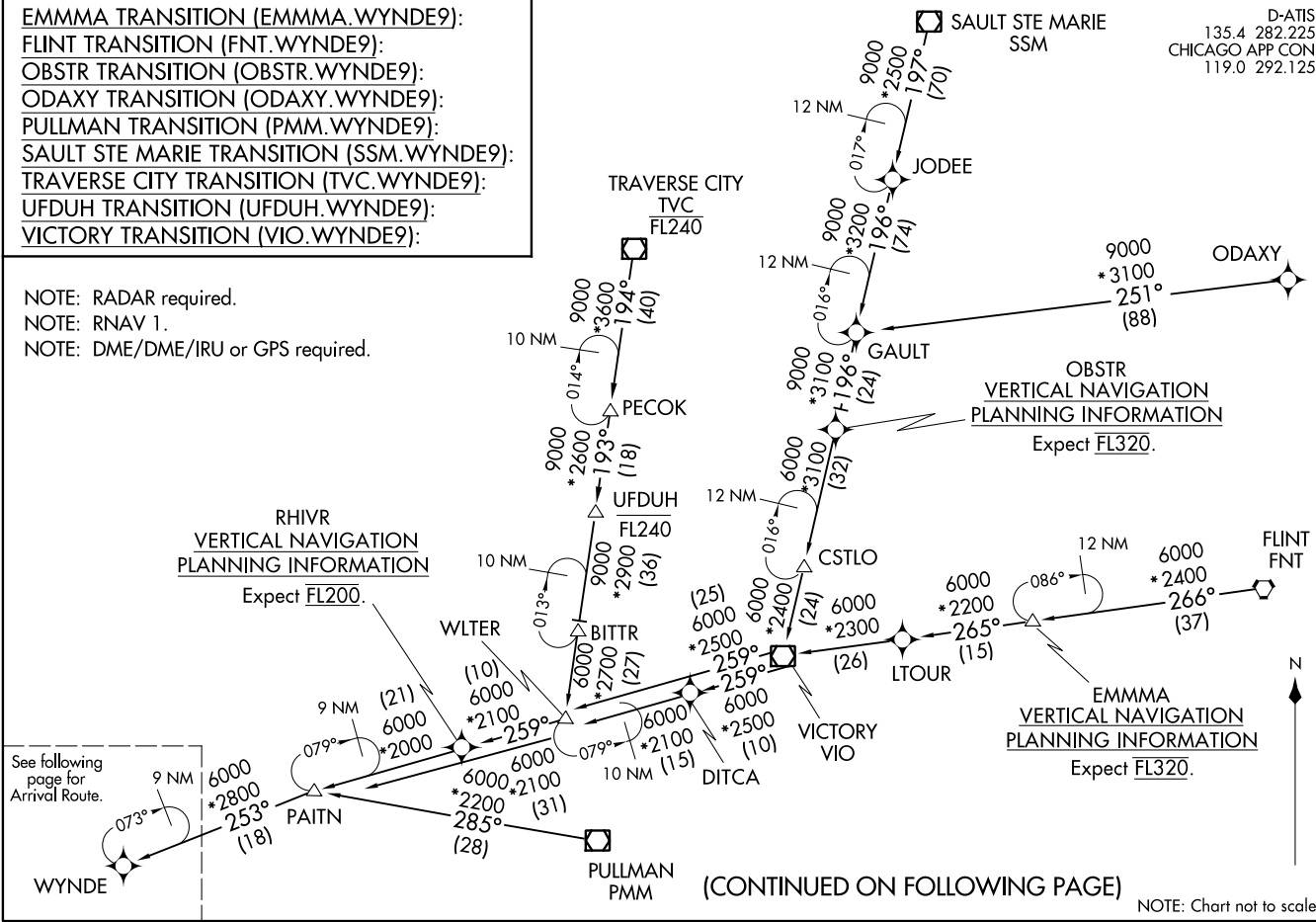
D-ATIS
135.4 282.225
CHICAGO APP CON
119.0 292.125

EMMMA TRANSITION (EMMMA.WYNDE9):
FLINT TRANSITION (FNT.WYNDE9):
OBSTR TRANSITION (OBSTR.WYNDE9):
ODAXY TRANSITION (ODAXY.WYNDE9):
PULLMAN TRANSITION (PMM.WYNDE9):
SAULT STE MARIE TRANSITION (SSM.WYNDE9):
TRAVERSE CITY TRANSITION (TVC.WYNDE9):
UFDUH TRANSITION (UFDUH.WYNDE9):
VICTORY TRANSITION (VIO.WYNDE9):

NOTE: RADAR required.
NOTE: RNAV 1.
NOTE: DME/DME/IRU or GPS required.

WYNDE NINE ARRIVAL (RNAV) Transition Routes
(WYNDE.WYNDE9) 03JAN19

(WYNDE.WYNDE9) 19003
AL-156 (FAA)
CHICAGO O'HARE INTL (ORD)
CHICAGO, ILLINOIS



(CONTINUED ON FOLLOWING PAGE)

NOTE: Chart not to scale.

ARRIVAL ROUTE DESCRIPTION

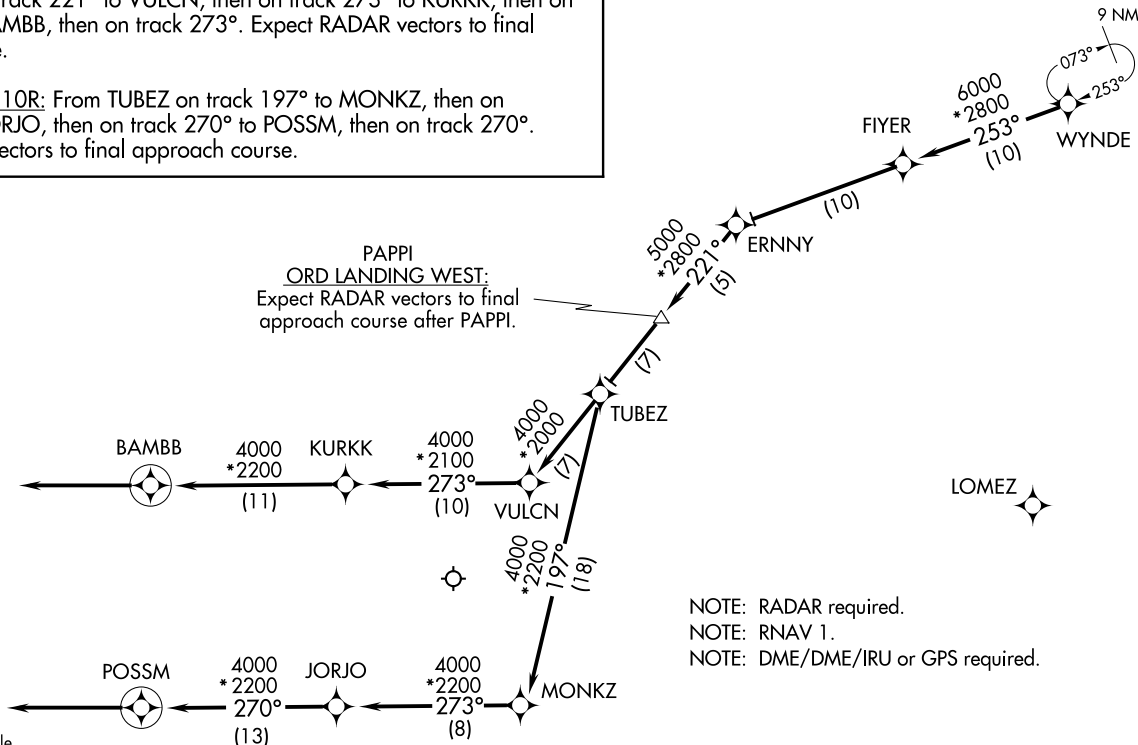
From WYNDE on track 253° to FIYER, then on track 253° to ERNNY, then on track 221° to PAPPI, then on track 221° to TUBEZ.

LANDING RWYS 4L/R, 9L/R, 10L/C, 22L/R, 27L/R, 28L/C/R:

From TUBEZ on track 221° to VULCN, then on track 273° to KURKK, then on track 273° to BAMBB, then on track 273°. Expect RADAR vectors to final approach course.

LANDING RWY 10R: From TUBEZ on track 197° to MONKZ, then on track 273° to JORJO, then on track 270° to POSSM. Expect RADAR vectors to final approach course.

D-ATIS
135.4 282.225
CHICAGO APP CON
119.0 292.125



NOTE: Chart not to scale.

NOTE: RADAR required.
NOTE: RNAV 1.
NOTE: DME/DME/IRU or GPS required.

WYNDE NINE ARRIVAL (RNAV) Arrival Routes
(WYNDE: WYNDE9) 03JAN19

CHICAGO, ILLINOIS
CHICAGO O'HARE INTL (ORD)

(WYNDE: WYNDE9) 19003
WYNDE NINE ARRIVAL (RNAV) Arrival Routes
AL-166 (FAA)

CHICAGO O'HARE INTL (ORD)
CHICAGO, ILLINOIS