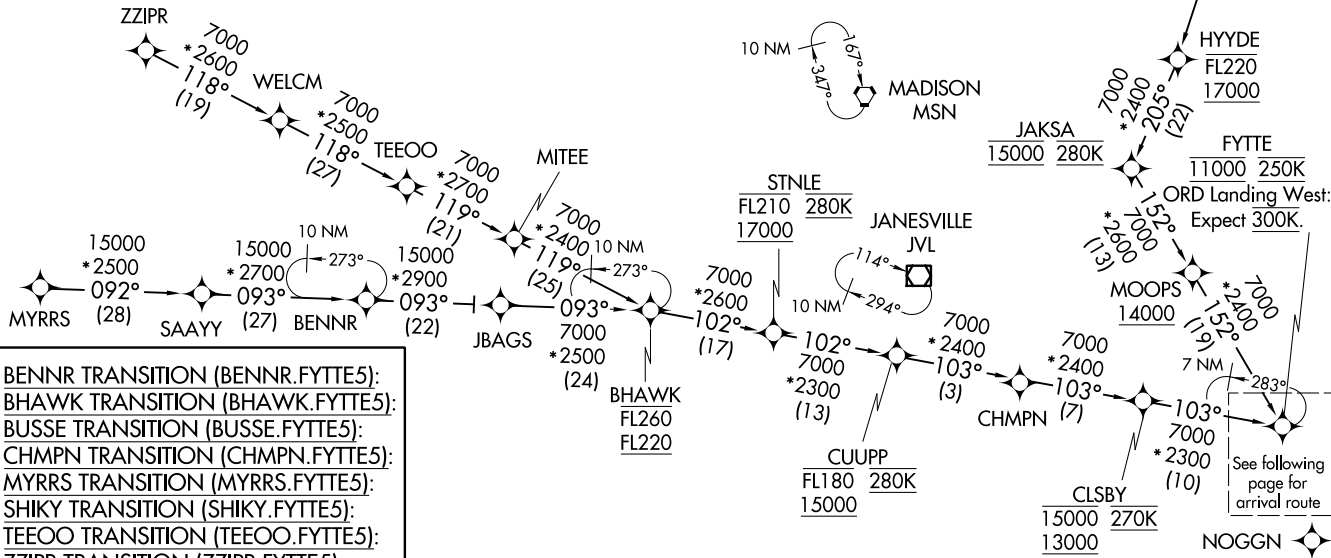


FYTFE FIVE ARRIVAL (RNAV) Transition Routes
(FYTFE.FYTFE5) 03JAN19

D-ATIS
135.4 282.225
CHICAGO APP CON
119.0 292.125

N

NOTE: RADAR required.
NOTE: RNAV 1.
NOTE: DME/DME/IRU or GPS required.



BENNR TRANSITION (BENNR.FYTFE5):
BHAWK TRANSITION (BHAWK.FYTFE5):
BUSSE TRANSITION (BUSSE.FYTFE5):
CHMPN TRANSITION (CHMPN.FYTFE5):
MYRRS TRANSITION (MYRRS.FYTFE5):
SHIKY TRANSITION (SHIKY.FYTFE5):
TEEOO TRANSITION (TEEOO.FYTFE5):
ZZIPR TRANSITION (ZZIPR.FYTFE5):

NOTE: Chart not to scale. (CONTINUED ON FOLLOWING PAGE)

(FYTFE.FYTFE5) 19003
FYTFE FIVE ARRIVAL (RNAV) Transition Routes

CHICAGO O'HARE INTL (ORD)
CHICAGO, ILLINOIS

A1-166

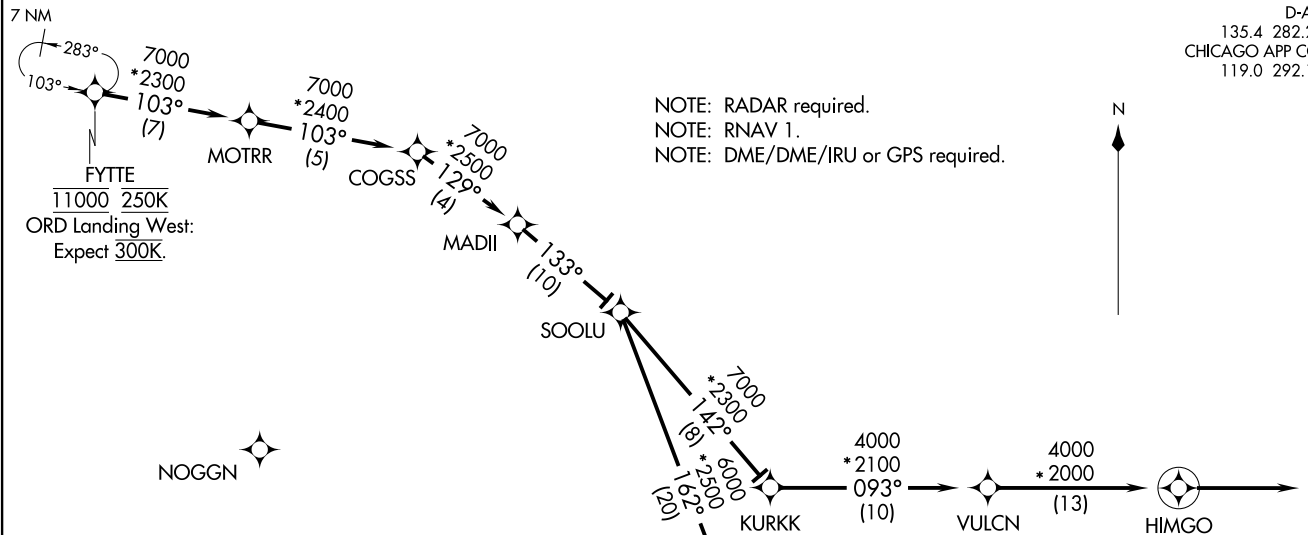
See following page for arrival route

D-ATIS
135.4 282.225
CHICAGO APP CON
119.0 292.125

(FYTE:FYTES) 19003
FYTE FIVE ARRIVAL (RNAV) Arrival Routes

A1-166

CHICAGO O'HARE INTL (ORD)
CHICAGO, ILLINOIS



NOTE: RADAR required.
NOTE: RNAV 1.
NOTE: DME/DME/IRU or GPS required.

ARRIVAL ROUTE DESCRIPTION

From FYTE on track 103° to MOTRR, then on track 103° to COGSS, then on track 129° to MADII, then on track 133° to SOOLU.

Landing Rwys 4L/R, 9L/R, 10L/C/R, 22L/R, 27L/R: From SOOLU on track 142° to KURKK, then on track 093° to VULCN, then on track 093° to HIMGO, then on track 093°. Expect RADAR vectors to final approach course.

Landing Rwys 28L/C/R: From SOOLU on track 162° to JORJO, then on track 093° to MONKZ, then on track 093° to TONIE, then on track 093°. Expect RADAR vectors to final approach course.

NOTE: Chart not to scale.

FYTE FIVE ARRIVAL (RNAV) Arrival Routes
(FYTE:FYTES) 03JAN19

CHICAGO, ILLINOIS
CHICAGO O'HARE INTL (ORD)