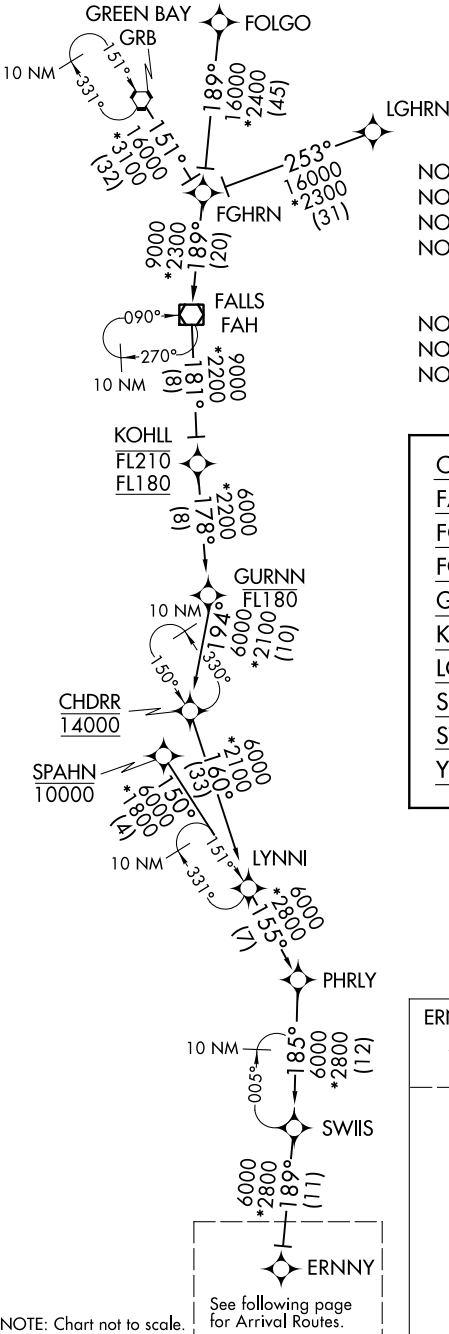


ERNNY FIVE ARRIVAL (RNAV) Transition Routes

CHICAGO, ILLINOIS

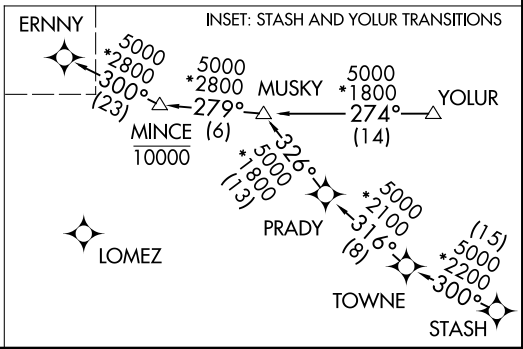
D-ATIS
135.4 282.225
CHICAGO APP CON
119.0 292.125



- NOTE: RADAR required.
- NOTE: RNAV 1.
- NOTE: DME/DME/IRU or GPS required.
- NOTE: Landing Rwy: 4L/R, 22L/R, 27L/R, 28L/C/R: Expect RADAR vectors to final approach course after ERNNY.
- NOTE: YOLUR transition - ATC assigned only.
- NOTE: STASH transition - ATC assigned only.
- NOTE: SPAHN transition: For Milwaukee terminal area departures only.

- CHDRR TRANSITION (CHDRR.ERNNY5):
- FALLS TRANSITION (FAH.ERNNY5):
- FGHRN TRANSITION (FGHRN.ERNNY5):
- FOLGO TRANSITION (FOLGO.ERNNY5):
- GREEN BAY TRANSITION (GRB.ERNNY5):
- KOHL TRANSITION (KOHL.ERNNY5):
- LGHRN TRANSITION (LGHRN.ERNNY5):
- SPAHN TRANSITION (SPAHN.ERNNY5):
- STASH TRANSITION (STASH.ERNNY5):
- YOLUR TRANSITION (YOLUR.ERNNY5):

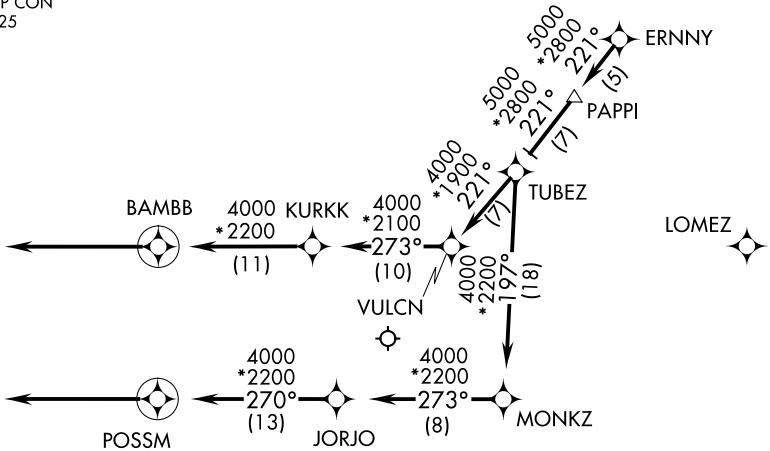
(CONTINUED ON FOLLOWING PAGE)



NOTE: Chart not to scale. See following page for Arrival Routes.

ERNNY FIVE ARRIVAL (RNAV) Arrival Routes

D-ATIS
135.4 282.225
CHICAGO APP CON
119.0 292.125



- NOTE: RADAR required.
- NOTE: RNAV 1.
- NOTE: DME/DME/IRU or GPS required.
- NOTE: Landing RwyS 4L/R, 22L/R, 27L/R, 28L/C/R: Expect RADAR vectors to final approach course after ERNNY.

NOTE: Chart not to scale.

ARRIVAL ROUTE DESCRIPTION

From ERNNY on track 221° to PAPP, then on track 221° to TUBEZ.

LANDING RWYS 4L/R, 09L/R, 10L/C, 22L/R, 27L/R, 28L/C/R: From TUBEZ on track 221° to VULCN, then on track 273° to KURKK, then on track 273° to BAMBB, then on track 273°. Expect RADAR vectors to final approach course.

LANDING RWY 10R: From TUBEZ on track 197° to MONKZ, then on track 273° to JORJO, then on track 270° to POSSM, then on track 270°. Expect RADAR vectors to final approach course.

EC-3, 05 DEC 2019 to 02 JAN 2020

EC-3, 05 DEC 2019 to 02 JAN 2020