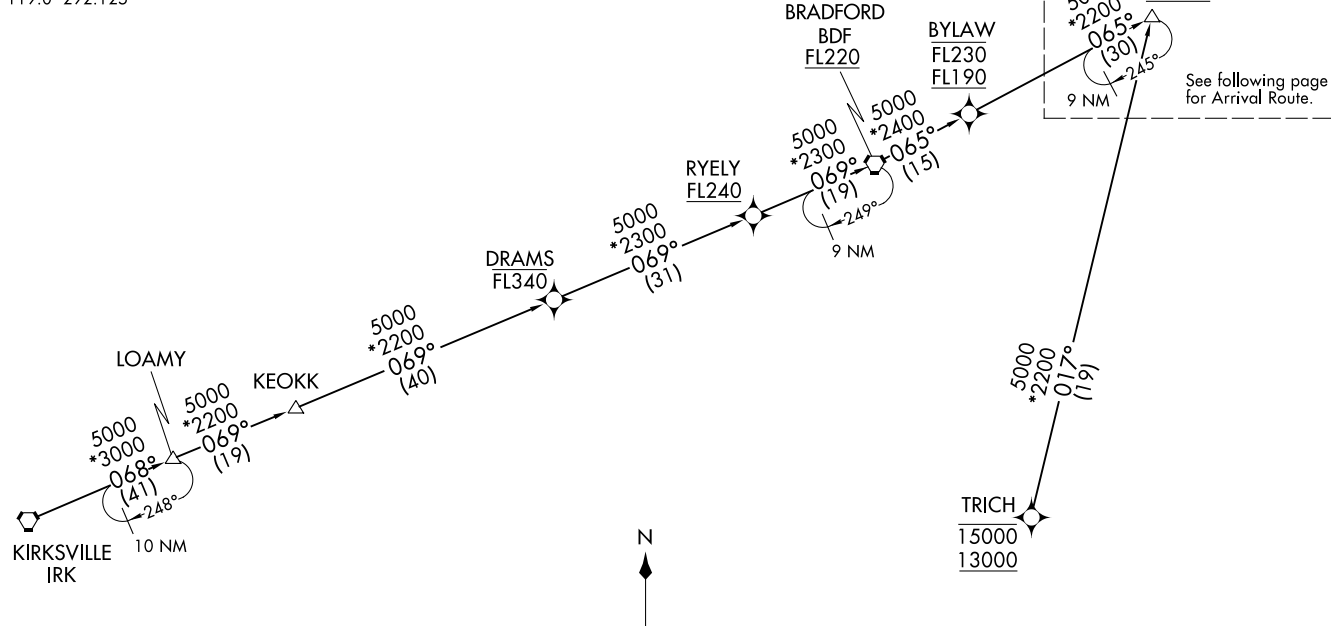


BENKY FIVE ARRIVAL (RNAV) Transition Routes
(BENKY.BENKY5) 03JAN19

D-ATIS
135.4 282.225
CHICAGO APP CON
119.0 292.125



See following page for Arrival Route.

(BENKY.BENKY5) 19003

AL-166 (FAA)

CHICAGO O'HARE INTL (ORD)
CHICAGO, ILLINOIS

NOTE: RADAR required.
NOTE: RNAV 1.
NOTE: DME/DME/IRU or GPS required.

BRADFORD TRANSITION (BDF.BENKY5):
BYLAW TRANSITION (BYLAW.BENKY5):
KIRKSVILLE TRANSITION (IRK.BENKY5):
LOAMY TRANSITION (LOAMY.BENKY5):
TRICH TRANSITION (TRICH.BENKY5):

(CONTINUED ON FOLLOWING PAGE)

NOTE: Chart not to scale.

CHICAGO, ILLINOIS
CHICAGO O'HARE INTL (ORD)

BENKY FIVE ARRIVAL (RNAV) Arrival Routes
(BENKY.BENKY5) 03JAN19

D-ATIS
135.4 282.225
CHICAGO APP CON
119.0 292.125

NOTE: RADAR required.
NOTE: RNAV 1.
NOTE: DME/DME/IRU or GPS required.



LENDR

BENKY
12000



NEWRK

5000
*2300
051°
(13)

AHSTN

5000
*2500
045°
(14)

PETAH

4000
*2600
027°
(14)

KURKK

4000
*2100
093°
(10)

VULCN

4000
*2000
(13)

HIMGO

4000
*2100
093°
(7)

JORJO

4000
*2200
(8)

MONKZ

4000
*3400
(14)

TONIE



NOTE: Chart not to scale.

ARRIVAL ROUTE DESCRIPTION

From BENKY on track 065° to NEWRK, then on track 051° to AHSTN, then on track 045° to PETAH.

LANDING RWYS 4L/R, 9L/R, 10L/C/R, 22L/R, 27L, 28L/C/R:

From PETAH on track 093° to JORJO, then on track 093° to MONKZ, then on track 093° to TONIE, then on track 093°. Expect RADAR vectors to final approach course.

LANDING RWY 27R: From PETAH on track 027° to KURKK, then on track 093° to VULCN, then on track 093° to HIMGO, then on track 093°. Expect RADAR vectors to final approach course.

(BENKY.BENKY5) 19003

AL-166 (FAA)

CHICAGO O'HARE INTL (ORD)
CHICAGO, ILLINOIS

CHICAGO, ILLINOIS
CHICAGO O'HARE INTL (ORD)