

WAAS CH 99340 W10E	APP CRS 093°	Rwy Idg TDZE Apt Elev	7500 680 680
--	------------------------	-----------------------------	---

RNAV (GPS) Z RWY 10R

CHICAGO O'HARE INTL (ORD)

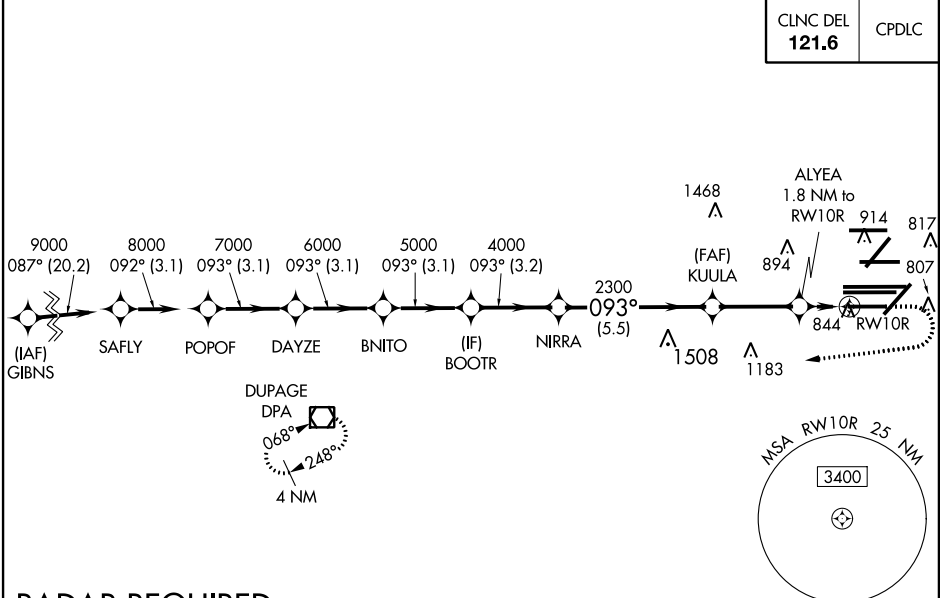
▼ For uncompensated Baro-VNAV systems, LNAV/VNAV NA below -19°C (-2°F) or above 54°C (130°F). Simultaneous approach authorized. Use of FD or AP providing RNAV track guidance required during simultaneous operations. LNAV procedure NA during simultaneous operations. DME/DME RNP-0.3 NA. For inop ALS, increase LNAV Cat C and D visibility to RVR 6000.

ALS-F-2

MISSED APPROACH: Climb to 1200 then climbing right turn to 4000 direct DPA VOR/DME and hold.

D-ATIS 135.4 282.225	CHICAGO APP CON 119.0 292.125	O'HARE TOWERS 128.15 348.0 (Rwy 9L/27R) 133.0 348.0 (10R/28L) 120.75 121.15 126.9 132.7 348.0 (CENTER)	CND CON (TWR NORTH) 124.125 118.05 226.675 (ALL TWRs)	(TWR CENTER) 121.75 (OBND) 121.9 (IBND)
--	---	--	---	---

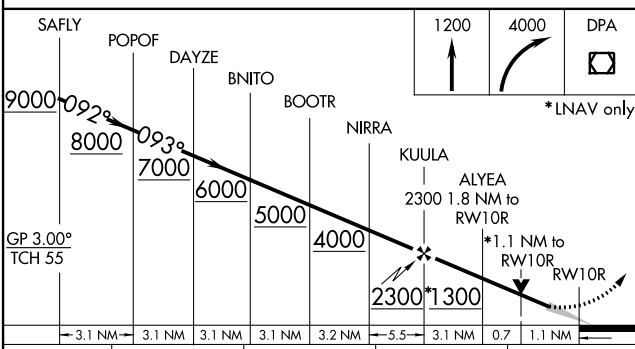
CLNC DEL 121.6	CPDLC
--------------------------	-------



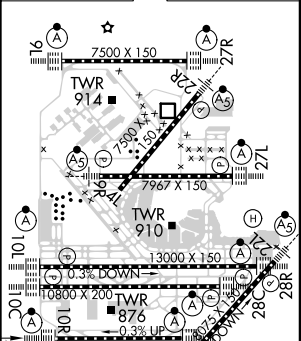
EC-3, 20 JUN 2019 to 18 JUL 2019

EC-3, 20 JUN 2019 to 18 JUL 2019

RADAR REQUIRED



ELEV 680	D	TDZE 680
----------	----------	----------



CATEGORY	A	B	C	D
LPV DA		881/18	201 (300-½)	
LNAV/VNAV DA		1122/50	442 (500-1)	
LNAV MDA	1100/24	420 (500-½)	1100/40	420 (500-¾)

HIRL all Rwys
TDZ/CL all Rwys except 4L