


WAAS CH 42804 W28A	APP CRS 273°	Rwy Idg TDZE Apt Elev	13000 651 680
--	------------------------	-----------------------------	--

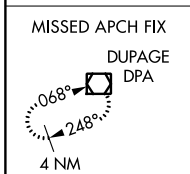
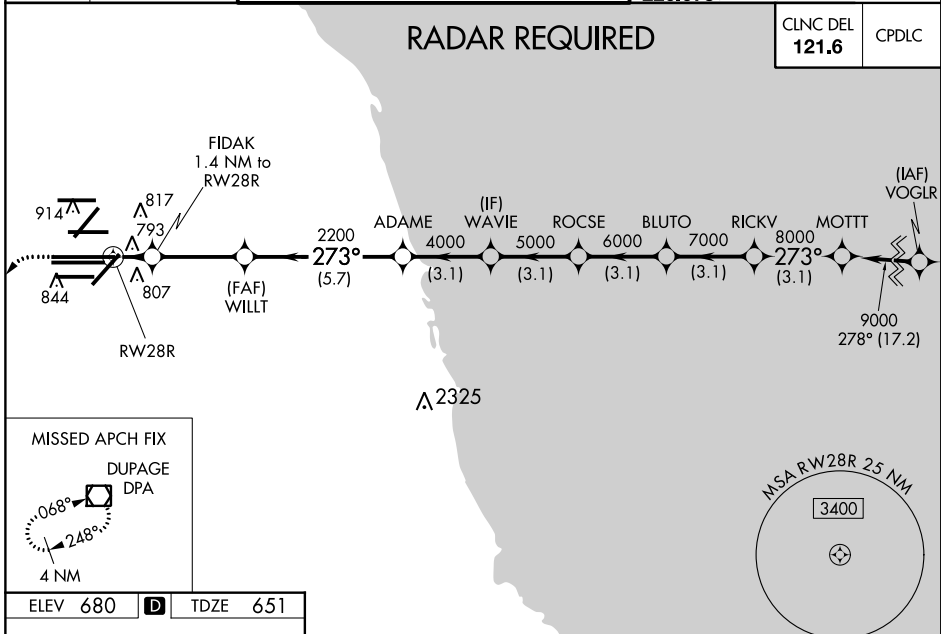
RNAV (GPS) RWY 28R

CHICAGO O'HARE INTL (ORD)

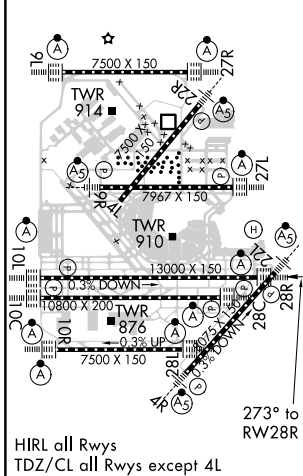
▼ For uncompensated Baro-VNAV systems, LNAV/VNAV NA below -19°C (-2°F) or above 54°C (130°F). Simultaneous approach authorized. DME/DME RNP-0.3 NA. For inop ALSF-2, increase LNAV/VNAV all Cats visibility to 1½ mile and LNAV Cats C/D visibility to RVR 6000. LNAV procedure NA during simultaneous operations. Use of FD or AP providing RNAV track guidance required during simultaneous operations.

ALSF-2

 MISSED APPROACH: Climb to 1200 then climbing left turn to 4000 direct DPA VOR/DME and hold.

D-ATIS 135.4	CHICAGO APP CON 119.0 292.125	O'HARE TOWERS 128.15 348.0 (Rwy 9L/27R) 133.0 348.0 (110R/28L) 120.75 121.15 126.9 132.7 348.0 (CENTER)	GND CON (TWR CENTER) 124.125 (TWR NORTH) 121.75 (OBND) 118.05 (TWR SOUTH) 121.9 (IBND) 226.675 (ALL TWRs)
------------------------	---	---	---



ELEV 680	D	TDZE 651
----------	----------	----------



1200	4000	DPA	VGSi and RNAV glidepath not coincident (VGSi Angle 3.00°/TCH 70).					
*LNAV only.								
	FIDAK 1.4 NM to RWY 28R	WILLT 2200	ADAME 4000	WAVIE 5000	ROCSE 6000	RICKV 7000	MOTT 8000	9000
	1.4	3.3 NM	5.7 NM	3.1 NM	3.1 NM	3.1 NM	3.1 NM	GP 3.00° TCH 54
CATEGORY	A		B		C		D	
LPV DA			851/18		200 (200-½)			
LNAV/VNAV DA			1041/45		390 (400-¾)			
LNAV MDA	1060/24		409 (400-½)		1060/40		409 (400-¾)	

EC-3, 15 AUG 2019 to 12 SEP 2019

EC-3, 15 AUG 2019 to 12 SEP 2019