

WAAS CH <b>42634</b> <b>W28B</b>	APP CRS <b>273°</b>	Rwy Idg <b>10800</b> TDZE <b>651</b> Apt Elev <b>680</b>
--	------------------------	--

# RNAV (GPS) RWY 28C

CHICAGO O'HARE INTL (ORD)

**▼** DME/DME RNP-0.3 NA. Simultaneous approach authorized. For uncompensated Baro-VNAV systems, LNAV/VNAV NA below -19°C (-2°F) or above 54°C (130°F). LNAV procedure NA during simultaneous operations. Use of FD or AP providing RNAV track guidance required during simultaneous operations. For inop ALSF, increase LNAV Cat C and D visibility to RVR 6000.

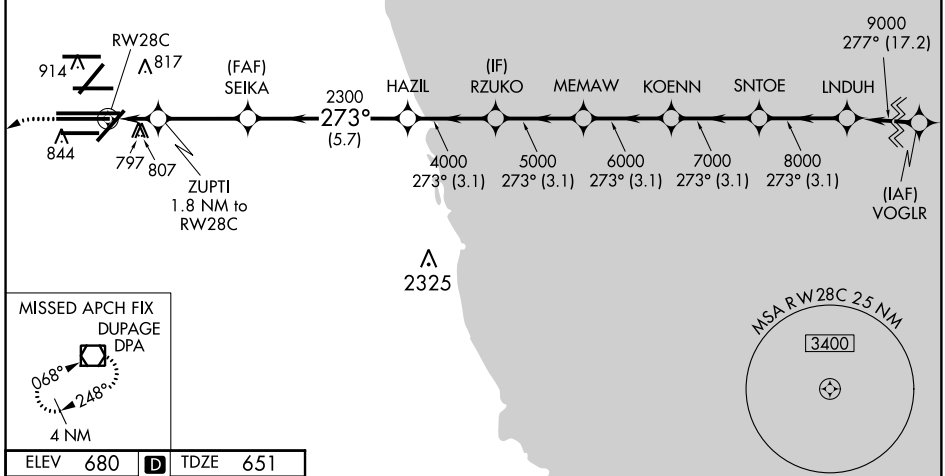
ALSF-2

**MISSED APPROACH:**  
Climb to 1100 then climbing left turn to 4000 direct DPA VOR/DME and hold.

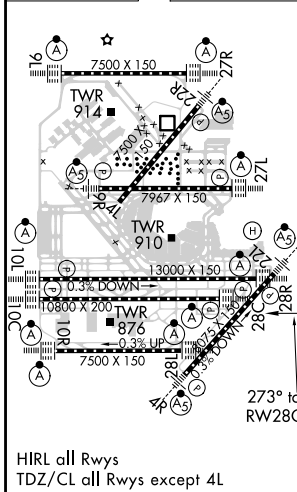
D-ATIS <b>135.4</b> <b>282.225</b>	CHICAGO APP CON <b>119.0 292.125</b>	O'HARE TOWERS <b>128.15 348.0</b> (Rwy 9L/27R) <b>133.0 348.0</b> (10R/28L) <b>126.9 126.9</b> (CENTER)				GND CON (TWR NORTH) <b>124.125 118.05</b> (TWR SOUTH) <b>226.675</b> (ALL TWRs)	(TWR CENTER) <b>121.75</b> (OBND) <b>121.9</b> (IBND)
--	---	--	--	--	--	---	---

CLNC DEL <b>121.6</b>	CPDLC
--------------------------	-------

## RADAR REQUIRED



ELEV <b>680</b>	<b>D</b>	TDZE <b>651</b>
-----------------	----------	-----------------



1100	4000	DPA	VGSi and RNAV glidepath not coincident (VGSi Angle 3.00/TCH 80).				
*LNAV only.							
ZUPTI 1.8 NM to RW28C	SEIKA 2300	HAZIL	RZUKO	MEMAW	KOENN	SNTOE	LNDUH
*1 NM to RW28C							9000
RW28C							8000
							GP 3.00° TCH 55
	1.260	2300					
	1 NM	0.8	3.2 NM	5.7 NM	3.1 NM	3.1 NM	3.1 NM
CATEGORY	A		B		C		D
LPV DA			851/18		200 (200-½)		
LNAV/VNAV DA			1094/50		443 (500-1)		
LNAV MDA	1060/24		409 (400-½)		1060/40		409 (400-¾)

EC-3, 15 AUG 2019 to 12 SEP 2019

EC-3, 15 AUG 2019 to 12 SEP 2019