

WAAS CH 69508 W27B	APP CRS 273°	Rwy Idg TDZE 664 Apt Elev 680	7500
--	------------------------	---	-------------

RNAV (GPS) RWY 27R

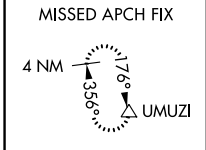
CHICAGO O'HARE INTL (ORD)

▼ For uncompensated Baro-VNAV systems, LNAV/VNAV NA below -19°C (-2°F) or above 54°C (130°F). Simultaneous approach authorized. DME/DME RNP-0.3 NA. LNAV procedure NA during simultaneous operations. Use of FD or AP providing RNAV track guidance required during simultaneous operations.



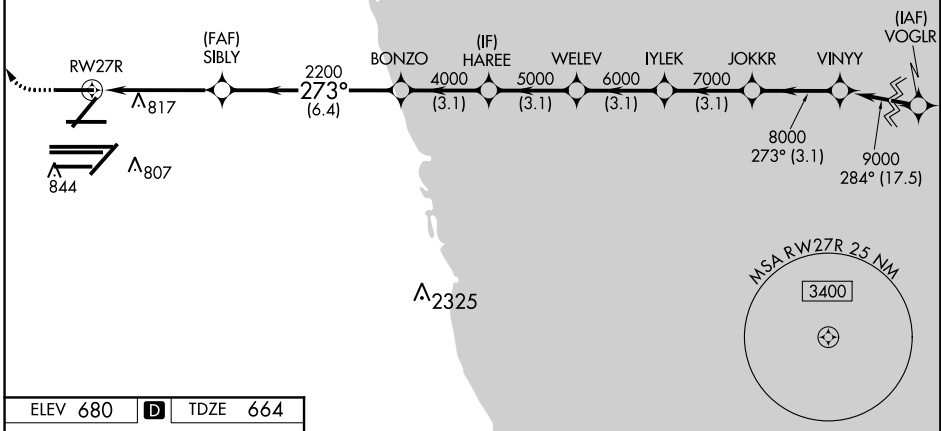
MISSED APPROACH: Climb to 1100 then climbing right turn to 4000 direct UMUZI and hold.

D-ATIS 135.4 282.225	CHICAGO APP CON 119.0 393.1	O'HARE TOWERS 128.15 348.0 (Rwy 9L/27R) 133.0 348.0 (10R/28L) 120.75 121.15 126.9 132.7 348.0 (CENTER)	GND CON (TWR CENTER) 124.125 (TWR NORTH) 121.75 (OBND) (TWR SOUTH) 118.05 (ALL TWRs) 121.9 (IBND) 226.675 134.15
--	---------------------------------------	--	---

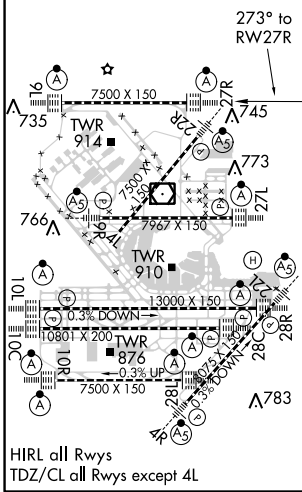


RADAR REQUIRED

CLNC DEL 121.6	CPDLC
--------------------------	-------



ELEV 680	D	TDZE 664
----------	----------	----------



1100	4000	UMUZI						
* LNAV only.								
		SIBLY 2200	BONZO 4000	HAREE 5000	WELEV 6000	IYLEK 7000	JOKKR 8000	VINNY 9000
		* 1.3 NM to RW27R						GP 3.00 TCH 55
		1.3	3.4	6.4 NM	3.1 NM	3.1 NM	3.1 NM	3.1 NM
CATEGORY	A		B		C		D	
LPV DA			864/18		200 (200-1/2)			
LNAV/VNAV DA			961/24		297 (300-1/2)			
LNAV MDA	1120/24		456 (500-1/2)		1120/45		456 (500-3/4)	