

WAAS CH <b>90504</b> <b>W22A</b>	APP CRS <b>223°</b>	Rwy Idg <b>7500</b> TDZE <b>652</b> Apt Elev <b>672</b>
--	------------------------	---

# RNAV (GPS) RWY 22R

CHICAGO-O'HARE INTL (ORD)

▼ For uncompensated Baro-VNAV systems, LNAV/VNAV NA below -22°C (-7°F) or above 39°C (102°F). Simultaneous approach authorized with Rwy 22L. DME/DME RNP-0.3 NA. LNAV procedure NA during simultaneous operations. Use of FD or AP providing RNAV track guidance required during simultaneous operations.

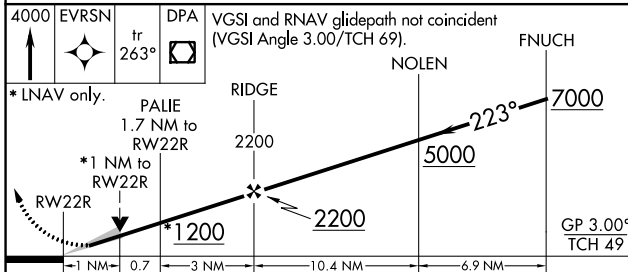
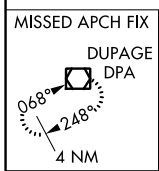
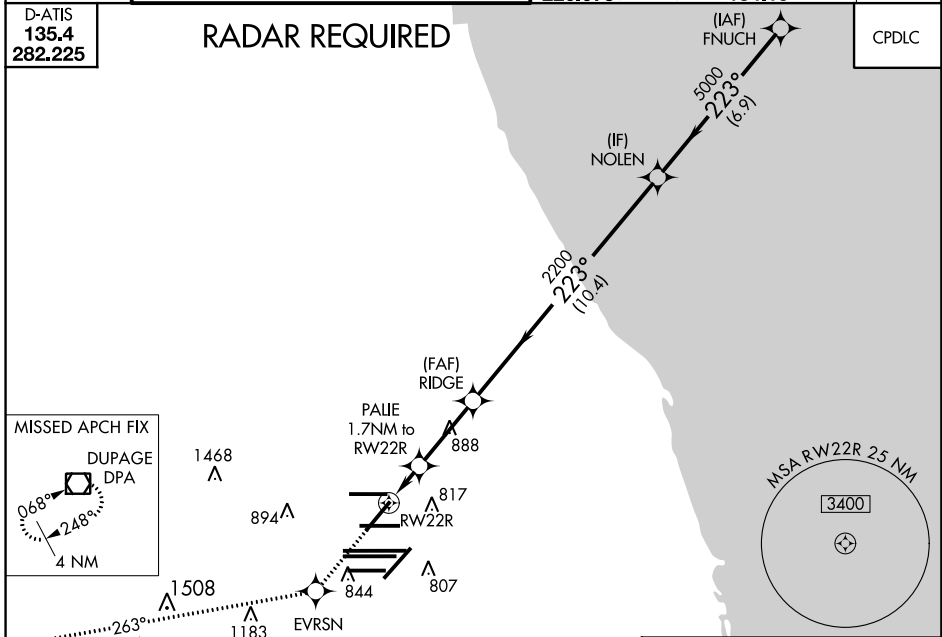


MISSED APPROACH: Climb to 4000 direct EVRSN and on track 263° to DPA VOR/DME and hold.

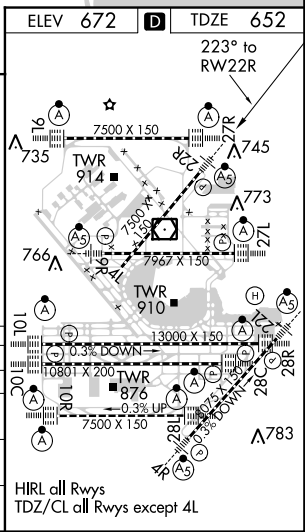
CHICAGO APP CON <b>119.0 393.1</b>	O'HARE TOWERS <b>128.15 348.0</b> (Rwy 9L/27R) <b>133.0 348.0</b> (10R/28L) <b>120.75 121.15 126.9 132.7 348.0</b> (CENTER)	GND CON (TWR CENTER) <b>124.125</b> (TWR NORTH) <b>121.75</b> (OBND) <b>118.05</b> (TWR SOUTH) <b>121.9</b> (BND) <b>226.675</b> (ALL TWRs) <b>134.15</b>	CLNC DEL <b>121.6</b>
---------------------------------------	--	--	--------------------------

D-ATIS <b>135.4</b> <b>282.225</b>
--

## RADAR REQUIRED



CATEGORY	A	B	C	D
LPV DA		852/18	200 (200-½)	
LNAV/VNAV DA		972/32	320 (300-¾)	
LNAV MDA	1040/24	388 (400-½)	1040/35	388 (400-¾)
CIRCLING	1220-1	548 (600-1)	1220-1½	1240-2
		548 (600-1½)	548 (600-2)	



EC-3, 29 MAR 2018 to 26 APR 2018

EC-3, 29 MAR 2018 to 26 APR 2018