


WAAS CH 99508 W09B	APP CRS 093°	Rwy Idg 7500 TDZE 668 Apt Elev 680
----------------------------------------	------------------------	---------------------------------------------------------------

RNAV (GPS) RWY 9L

CHICAGO O'HARE INTL (ORD)

▽ For uncompensated Baro-VNAV systems, LNAV/VNAV NA below -1°C (-2°F) or above 54°C (130°F). Simultaneous approach authorized. DME/DME RNP-0.3 NA. LNAV procedure NA during simultaneous operations. Use of FD or AP providing RNAV track guidance required during simultaneous operations. For inop ALSF, increase LNAV/VNAV all Cats visibility to RVR 5000 and LNAV Cats C/D visibility to RVR 6000.

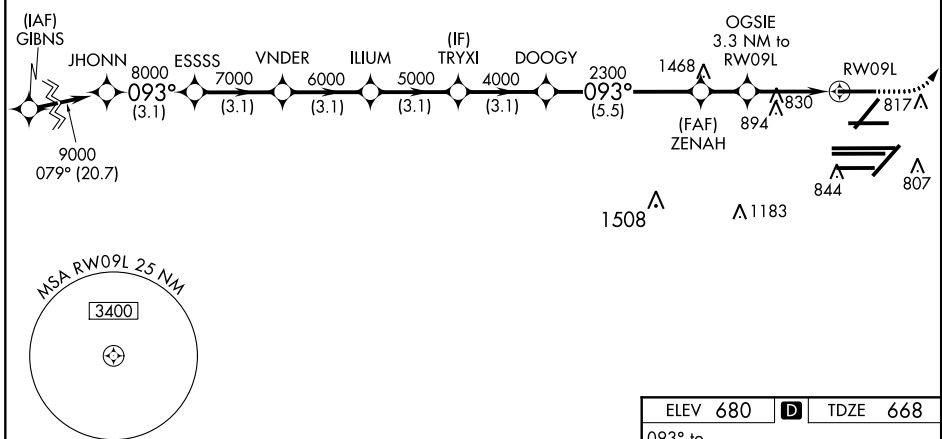
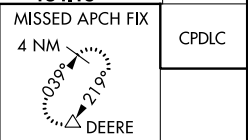
ALSF-2
(A) 

MISSED APPROACH:
Climb to 1100 then climbing left turn to 4000 direct DEERE and hold.

CHICAGO APP CON 119.0 393.1	O'HARE TOWERS 128.15 348.0 (Rwy 9L/27R) 133.0 348.0 (10R/28L) 120.75 121.15 126.9 132.7 348.0 (CENTER)	GND CON (TWR CENTER) 124.125 (TWR NORTH) 121.75 (OBND) 118.05 (TWR SOUTH) 121.9 (IBND) 226.675 (ALL TWRS) 134.15	CLNC DEL 121.6
---------------------------------------	--------------------------------------------------------------------------------------------------------------------------------	---------------------------------------------------------------------------------------------------------------------------------------------------------------	--------------------------

D-ATIS
135.4
282.225

RADAR REQUIRED



EC-3, 29 MAR 2018 to 26 APR 2018

EC-3, 29 MAR 2018 to 26 APR 2018

JHONN 9000 GP 3.00° TCH 55	ESSSS 8000	VNDER 7000	ILIUM 6000	TRYXI 5000	DOOGY 4000	ZENAH 2300	OGSIE 3.3 NM to RW09L	RW09L 1760
3.1 NM	3.1 NM	3.1 NM	3.1 NM	3.1 NM	5.5 NM	1.7 NM	2.2	1.1
CATEGORY	A		B		C		D	
LPV DA			868/18		200 (200-½)			
LNAV/VNAV DA			989/30		321 (400-¾)			
LNAV MDA	1080/24		412 (500-½)		1080/40		412 (500-¾)	

