


WAAS CH <b>81929</b> <b>W04A</b>	APP CRS <b>044°</b>	Rwy Idg <b>8075</b> TDZE <b>661</b> Apt Elev <b>672</b>
--	------------------------	---

# RNAV (GPS) RWY 4R

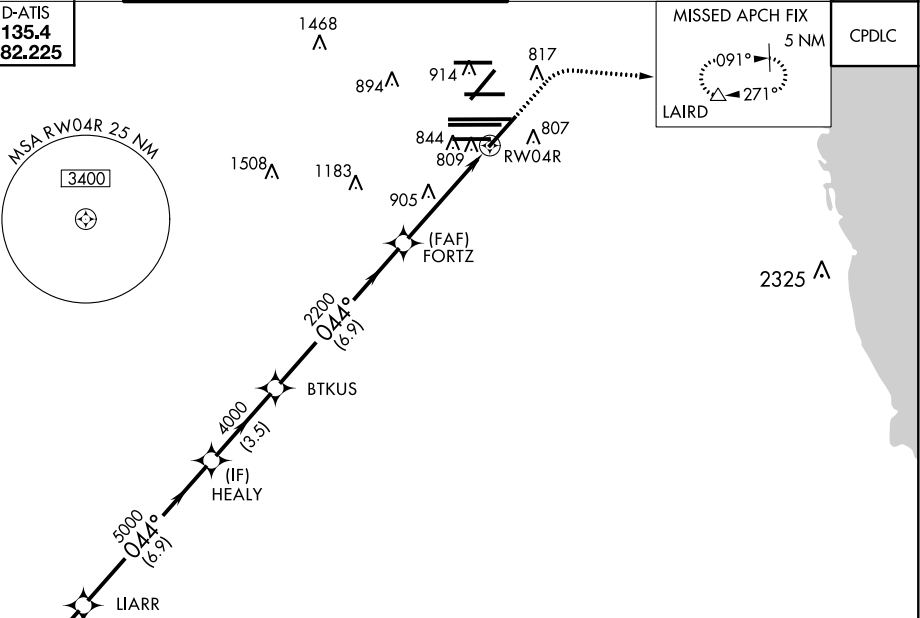
CHICAGO O'HARE INTL (ORD)

**▽** For uncompensated Baro-VNAV systems, LNAV/VNAV NA below -22°C (-7°F) or above 39°C (102°F). Simultaneous approach authorized with Rwy 4L. DME/DME RNP-0.3 NA. LNAV procedure NA during simultaneous operations. Use of FD or AP providing RNAV track guidance required during simultaneous operations.

**MALSR**  **MISSED APPROACH:** Climb to 1200 then climbing right turn to 4000 direct LAIRD and hold, continue climb-in-hold to 4000.

CHICAGO APP CON <b>119.0 292.125</b>	O'HARE TOWERS <b>128.15 348.0</b> (Rwy 9L/27R) <b>133.0 348.0</b> (10R/28L) <b>120.75 121.15 126.9 132.7 348.0</b> (CENTER)	GND CON (TWR CENTER) <b>124.125</b> (TWR NORTH) <b>118.05</b> (TWR SOUTH) <b>226.675</b> (ALL TWRs)	(TWR CENTER) <b>121.75</b> (OBND) <b>121.9</b> (IBND)	CLNC DEL <b>121.6</b>
---	--	--	--	--------------------------

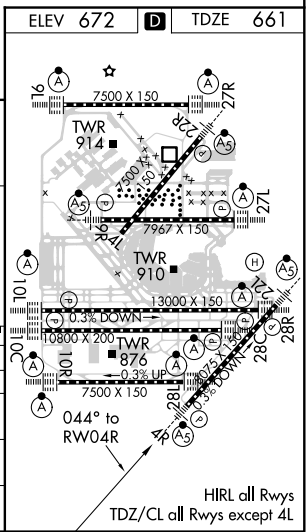
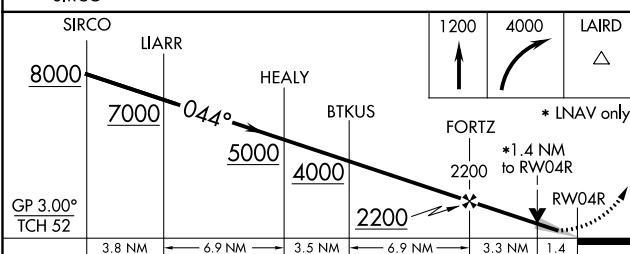
D-ATIS  
**135.4**  
**282.225**



EC-3, 15 AUG 2019 to 12 SEP 2019

EC-3, 15 AUG 2019 to 12 SEP 2019

## RADAR REQUIRED



CATEGORY	A	B	C	D
LPV DA		861/18	200 (200-½)	
LNAV/VNAV DA		990/32	329 (400-⅓)	
LNAV MDA	1160/24	499 (500-½)	1160/50	499 (500-1)
CIRCLING	1220-1	548 (600-1)	1220-1½ 548 (600-1½)	1240-2 568 (600-2)