

LOC/DME I-ZJ 110.75 Chan 44 (Y)	APP CRS 094°	Rwy Idg 7500 TDZE 680 Apt Elev 680
--	------------------------	---

ILS Z or LOC Z RWY 10R

CHICAGO O'HARE INTL (ORD)

RNAV 1-GPS or RADAR required for procedure entry. DME or RADAR required.
From GIBNS: RNAV-1 GPS required.
Simultaneous approach authorized.
For inop ALS, increase S-LOC 10R Cat C and D visibility to RVR 6000.

ALS F-2
MISSED APPROACH: Climb to 1200 then climbing right turn to 4000 direct DPA VOR/DME and hold.

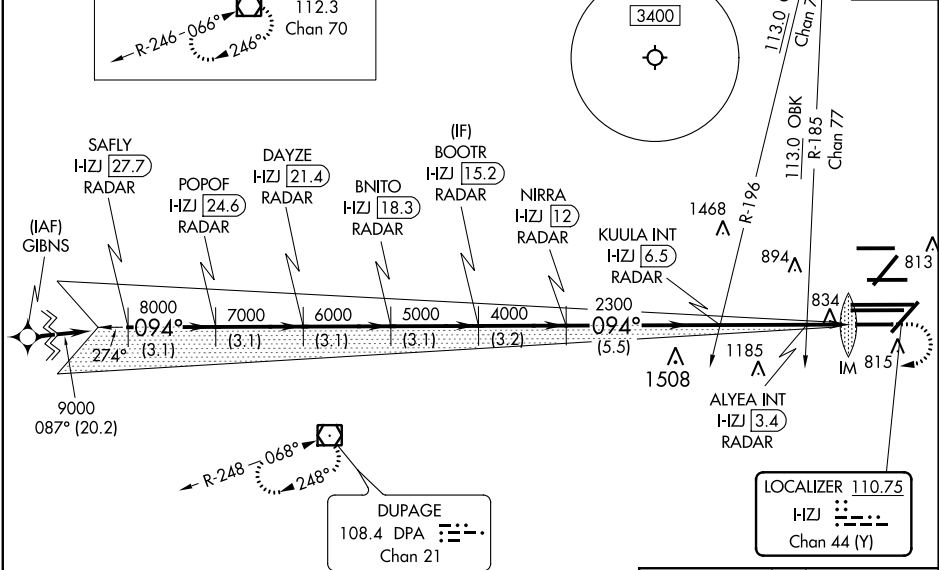
CHICAGO APP CON 119.0 292.125	O'HARE TOWERS 128.15 348.0 (Rwy 9L/27R) 133.0 348.0 (10R/28L) 126.9 132.7 348.0 (CENTER)	GND CON (TWR CENTER) 124.125 (TWR NORTH) 118.05 (TWR SOUTH) 226.675 (ALL TWRS)	121.75 (OBND) 121.9 (IBND)	CLNC DEL 121.6
---	--	--	---	--------------------------

D-ATIS **135.4**
282.225

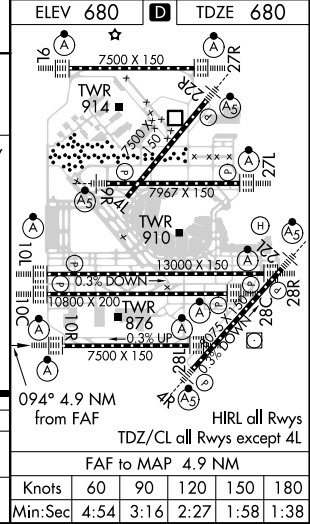
ALTERNATE MISSED APCH FIX

JOLIET JOT 112.3 Chan 70

CPDLC



	SAFLY I-HZJ [27.7] RADAR	POPOF I-HZJ [24.6] RADAR	DAYZE I-HZJ [21.4] RADAR	BNITO I-HZJ [18.3] RADAR	NIIRRA I-HZJ [12] RADAR	KUULA INT I-HZJ [6.5] RADAR	ALYEA INT I-HZJ [3.4] RADAR	1200	4000	DPA
										*LOC only
	9000	8000	7000	6000	5000	4000	2300	*1220		
	3.1 NM	3.1 NM	3.1 NM	3.1 NM	3.2 NM	5.5 NM	3.1 NM	0.7 NM	0.1 NM	
CATEGORY	A		B		C		D			
S-ILS 10R			880/18		200 (200-½)					
S-LOC 10R			1100/24		420 (500-½)					



EC-3, 10 OCT 2019 to 07 NOV 2019

EC-3, 10 OCT 2019 to 07 NOV 2019