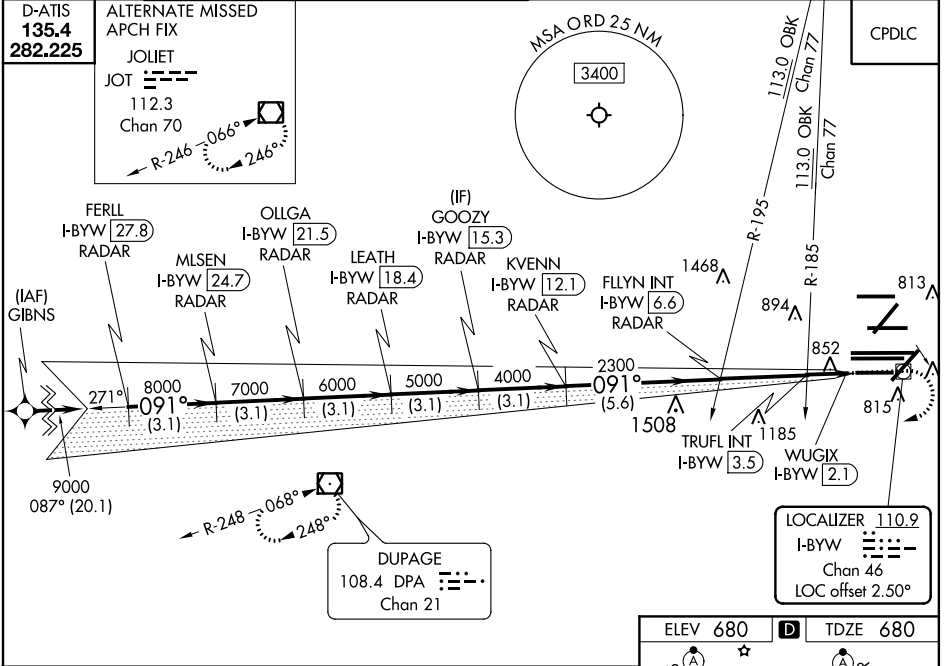


LOC/DME I-BYW 110.9 Chan 46	APP CRS 091°	Rwy Idg 7500 TDZE 680 Apt Elev 680
--	------------------------	---

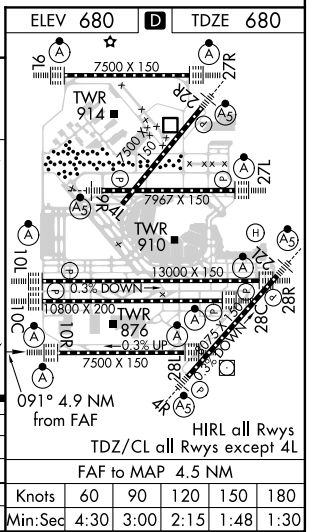
ILS Y or LOC Y RWY 10R

CHICAGO O'HARE INTL (ORD)

RNAV 1-GPS or RADAR required for procedure entry. DME or RADAR required. From GIBNS: RNAV-1 GPS required.		ALS-F-2 A	MISSED APPROACH: Climb to 1200 then climbing right turn to 4000 direct DPA VOR/DME and hold.	CLNC DEL 121.6	
CHICAGO APP CON 119.0 292.125		O'HARE TOWERS 128.15 348.0 (Rwy 9L/27R) 133.0 348.0 (10R/28L) 126.9 132.7 348.0 (CENTER)		GND CON (TWR NORTH) 124.125 (TWR SOUTH) 118.05 (ALL TWRs) 226.675	(TWR CENTER) (OBND) 121.75 (IBND) 121.9



FERLL I-BYW [27.8] RADAR	OLLGA I-BYW [21.5] RADAR	GOOZY I-BYW [15.3] RADAR	FLYIN INT I-BYW [6.6] RADAR	TRUFL INT I-BYW [3.5] RADAR	WUGIX I-BYW [2.1] RADAR
MLSN I-BYW [24.7] RADAR	LEATH I-BYW [18.4] RADAR	KVENN I-BYW [12.1] RADAR			
9000 091° 8000 7000 6000 5000 4000 2300 *1220					
GS 3.00° TCH 55					
3.1 NM		3.1 NM		3.1 NM	
3.1 NM		3.1 NM		5.6 NM	
3.1 NM		3.1 NM		3.1 NM	
3.1 NM		3.1 NM		0.6 NM	
3.1 NM		3.1 NM		0.8 NM	
3.1 NM		3.1 NM		0.4 NM	
CATEGORY	A		B		C
S-ILS 10R	930-3/4		250 (300-3/4)		
S-LOC 10R	1220-3/4		540 (600-3/4)		1220-1 540 (600-1)
TRUFL FIX MINIMUMS (DUAL VOR RECEIVERS OR DME REQUIRED)					
S-LOC 10R	1120-3/4		440 (500-3/4)		



EC-3, 10 OCT 2019 to 07 NOV 2019

EC-3, 10 OCT 2019 to 07 NOV 2019