

LOC/DME I-VQX 110.75 Chan 44(Y)	APP CRS 274°	Rwy ldg TDZE Apt Elev	7500 667 680
-----------------------------------------------------	------------------------	-----------------------------	-----------------------------------------

ILS RWY 28L (CAT II & III)

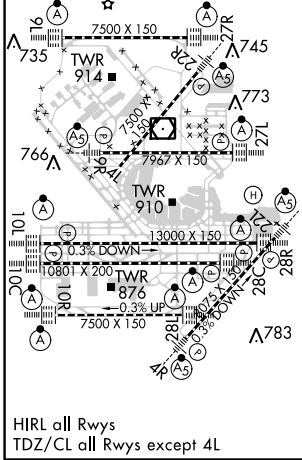
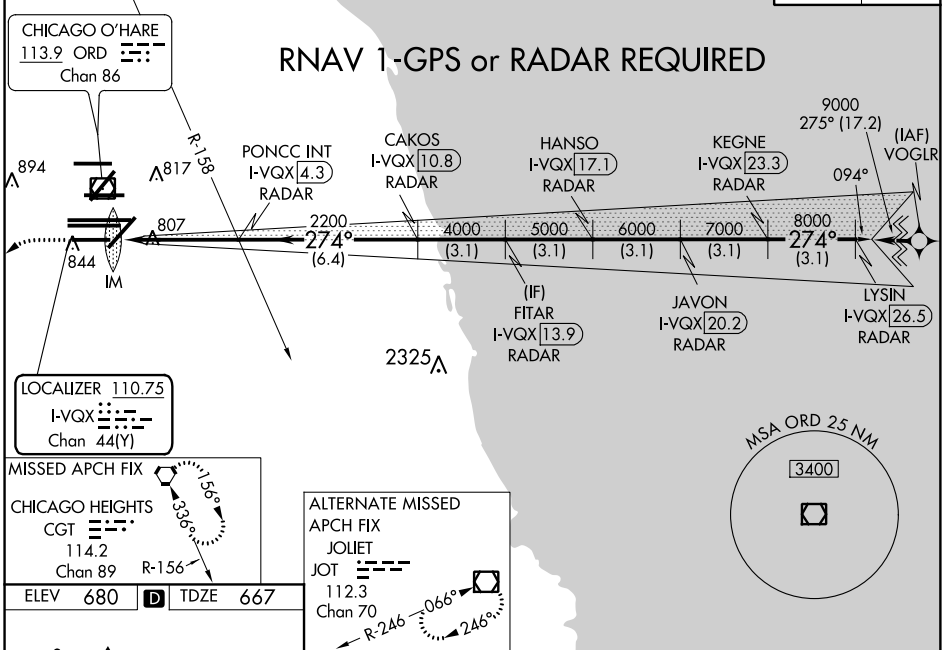
CHICAGO-O'HARE INTL (ORD)

Simultaneous approach authorized. DME or RADAR required.
CAT II: RVR 1000 authorized with specific OPSPEC, MSPEC, or LOA approval and use of autoland or HUD to touchdown.

MISSED APPROACH: Climb to 1200 then climbing left turn to 4000 direct CGT VORTAC and hold.

D-ATIS 135.4 282.225	CHICAGO APP CON 119.0 393.1	O'HARE TOWERS 128.15 348.0 (Rwy 9L/27R) 133.0 348.0 (10R/28L) 120.75 121.15 126.9 132.7 348.0 (CENTER)	GND CON (TWR CENTER) 121.75 (TWR NORTH) (TWR SOUTH) 118.05 (ALL TWRs) 121.9 (TWR CENTER) 121.9 (TWR NORTH) 121.9 (TWR SOUTH) 134.15
------------------------------------------	---------------------------------------	--------------------------------------------------------------------------------------------------------------------------------	-------------------------------------------------------------------------------------------------------------------------------------------------------------------------------------------------

113.0 OBK Chan 77	CLNC DEL 121.6	CPDLC
----------------------	--------------------------	-------



1200	4000	CGT								
			PONCC INT I-VQX 4.3 RADAR	CAKOS I-VQX 10.8 RADAR	HANSO I-VQX 17.1 RADAR	JAVON I-VQX 20.2 RADAR	KEGNE I-VQX 23.3 RADAR	LYSIN I-VQX 26.5 RADAR		
			IM 2200	2200	4000	5000	6000	7000	8000	
			99.4°	4.7 NM	6.4 NM	3.1 NM	3.1 NM	3.1 NM	3.1 NM	
CATEGORY			A	B	C	D				
S-ILS 28L			CAT II RA 106/12 100 DA 767							
S-ILS 28L			CAT III RVR 06							

CATEGORY II & III ILS - SPECIAL AIRCREW & AIRCRAFT CERTIFICATION REQUIRED

EC-3, 21 JUN 2018 to 19 JUL 2018

EC-3, 21 JUN 2018 to 19 JUL 2018