

LOC/DME I-ABU <b>111.75</b> Chan 54 (Y)	APP CRS <b>273°</b>	Rwy Idg <b>7500</b> TDZE <b>664</b> Apt Elev <b>680</b>
---	------------------------	---

# ILS RWY 27R (SA CAT I)

## CHICAGO O'HARE INTL (ORD)

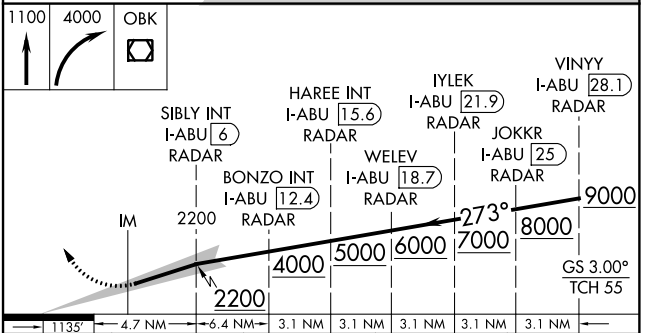
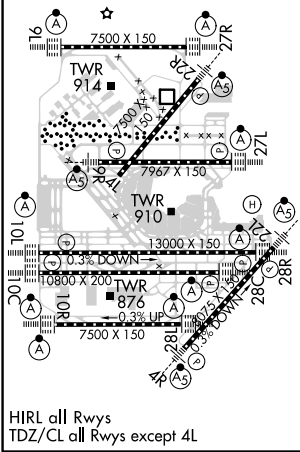
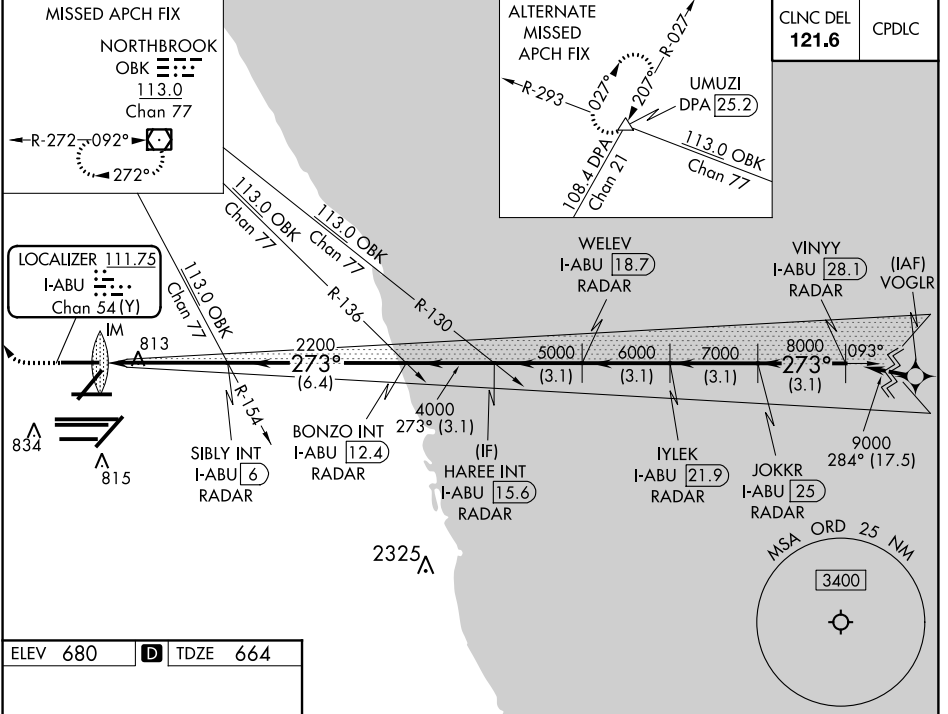
RNAV-1 GPS or RADAR required for procedure entry. RADAR or DME required.

ALSF-2

MISSED APPROACH: Climb to 1100 then climbing right turn to 4000 direct OBK VOR/DME and hold, continue climb-in-hold to 4000.

Simultaneous approach authorized. Requires specific OPSPEC, MSPEC, or LOA approval and use of HUD to DH.

D-ATIS <b>135.4</b> <b>282.225</b>	CHICAGO APP CON <b>119.0 292.125</b>	O'HARE TOWERS APP CON <b>128.15 348.0</b> <b>120.75 121.15 126.9 132.7 348.0</b> (CENTER)	GND CON (TWR NORTH) <b>124.125</b> (TWR SOUTH) <b>118.05</b> (ALL TWRs) <b>226.675</b>	TWR CENTER <b>121.75</b> (OBND) <b>121.9</b> (IBND)
--	---	--	---	---



CATEGORY	A	B	C	D
S-ILS-27R	RA 171/14 150 DA 814			
<b>SA CATEGORY I ILS - SPECIAL AIRCREW &amp; AIRCRAFT CERTIFICATION REQUIRED</b>				

EC-3, 10 OCT 2019 to 07 NOV 2019

EC-3, 10 OCT 2019 to 07 NOV 2019