

LOC I-FJU <b>110.1</b>	APP CRS <b>045°</b>	Rwy ldg TDZE Apt Elev	<b>8075</b> <b>661</b> <b>680</b>
---------------------------	------------------------	-----------------------------	---

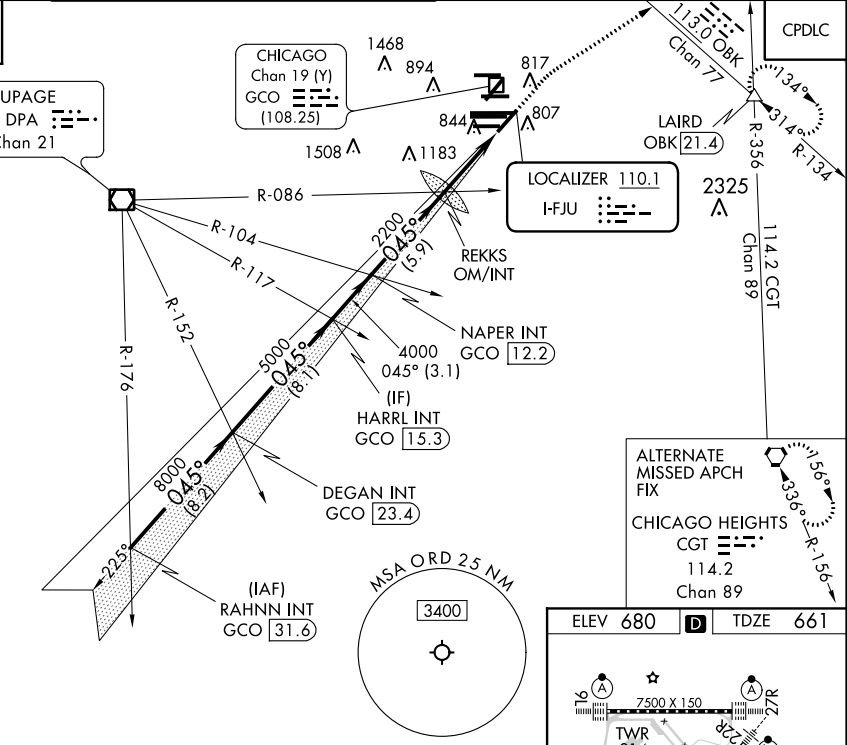
# ILS RWY 4R (SA CAT I & II)

CHICAGO O'HARE INTL (ORD)

RADAR required for procedure entry.		MALSR	MISSED APPROACH: Climb to 1200 then climbing right turn to 4000 on heading 060° and OBK VOR/DME R-134 to LAIRD INT/OBK 21.4 DME and hold.
Simultaneous approach authorized. SA CAT I: Requires specific OPSPEC, MSPEC, or LOA approval and use of HUD to DH. SA CAT II: Reduced lighting; Requires specific OPSPEC, MSPEC, or LOA approval and use of autoland or HUD to touchdown.			

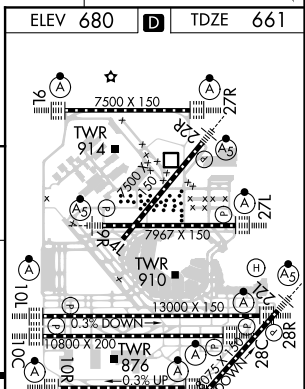
CHICAGO APP CON <b>119.0 292.125</b>	O'HARE TOWERS <b>128.15 348.0</b> (Rwy 9L/27R) <b>120.75 121.15 126.9 132.7 348.0</b> (CENTER)	GND CON (TWR NORTH) <b>124.125 118.05</b> (TWR SOUTH) <b>226.675</b> (ALL TWRs)	(TWR CENTER) <b>121.75</b> (OBND) <b>121.9</b> (IBND)	CLNC DEL <b>121.6</b>
---	--	--	---	--------------------------

D-ATIS <b>135.4</b> <b>282.225</b>
--



ALTERNATE MISSED APCH FIX
CHICAGO HEIGHTS CGT 114.2 Chan 89

RAHNN INT GCO 31.6	DEGAN INT GCO 23.4	HARRL INT GCO 15.3	NAPER INT GCO 12.2	REKKS OM/INT 21.28	OBK R-134	LAIRD
VGSI and ILS glidepath not coincident (VGSI Angle 3.00/TCH 67).		1200	4000	hdg 060°		
GS 3.00° TCH 52		11000 — 8.2 NM — 8.1 NM — 3.1 NM — 5.9 NM — 4.4 NM — 1049'				



CATEGORY	A	B	C	D
S-ILS 4R	SA CAT I	RA 160/16	150 DA 811	
S-ILS 4R	SA CAT II	RA 111/12	100 DA 761	

**SA CATEGORY I & II ILS - SPECIAL AIRCREW & AIRCRAFT CERTIFICATION REQUIRED**

ELEV 680	TDZE 661
HIRL all Rwys TDZ/CL all Rwys except 4L	

EC-3, 15 AUG 2019 to 12 SEP 2019

EC-3, 15 AUG 2019 to 12 SEP 2019