

LOC/DME I-SXH <b>108.95</b> Chan 26(Y)	APP CRS <b>093°</b>	Rwy Ldg TDZE Apt Elev	<b>10540</b> <b>669</b> <b>680</b>
--	------------------------	-----------------------------	--

# ILS or LOC RWY 10C

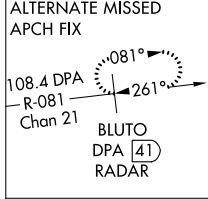
CHICAGO O'HARE INTL (ORD)

From GIBNS: RNAV-1 GPS required.  
RNAV 1-GPS or RADAR required for procedure entry. DME or RADAR required.  
Simultaneous approach authorized.

ALSf-2  
MISSED APPROACH: Climb to 4000 on heading 093° and CGT VORTAC R-336 to CGT VORTAC and hold.

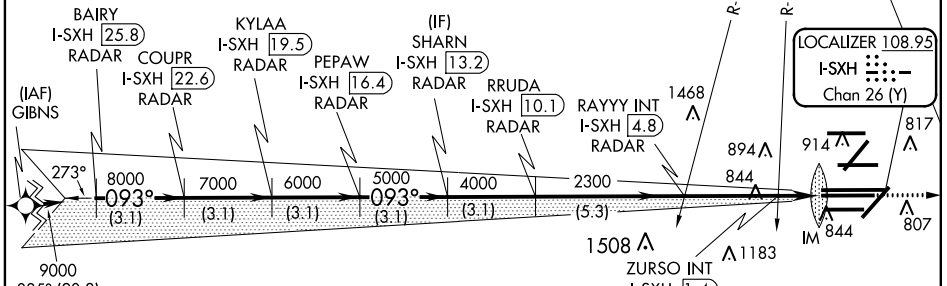
CHICAGO APP CON <b>119.0 292.125</b>	O'HARE TOWERS Rwy 9L/27R <b>128.15 348.0 133.0 348.0</b> (10R/28L) <b>120.75 121.15 126.9 132.7 348.0</b> (CENTER)	GND CON (TWR NORTH) <b>124.125</b> (TWR SOUTH) <b>118.05</b> (ALL TWRs) <b>226.675</b>	(TWR CENTER) <b>121.75</b> (OBND) <b>121.9</b> (IBND)	CLNC DEL <b>121.6</b>
---	---	---	---	--------------------------

D-ATIS  
**135.4**  
**282.225**



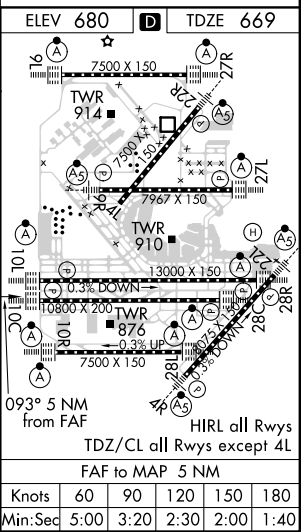
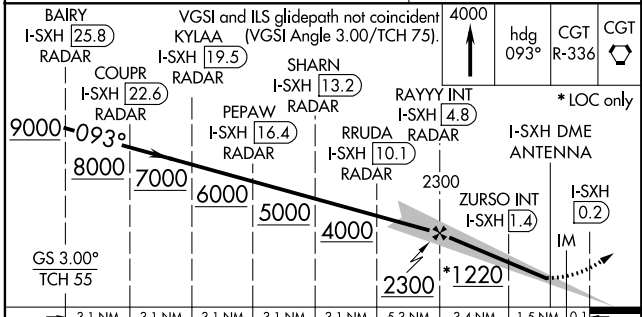
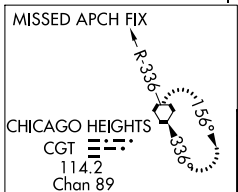
NORTHBROOK  
113.0 OBK  
Chan 77

114.2 CGT  
R-336  
Chan 89



EC-3, 18 JUL 2019 to 15 AUG 2019

EC-3, 18 JUL 2019 to 15 AUG 2019



3.1 NM	3.1 NM	3.1 NM	3.1 NM	3.1 NM	5.3 NM	3.4 NM	1.5 NM	0.1 NM
CATEGORY A					CATEGORY B		CATEGORY C	
S-ILS 10C					869/18 200 (200-½)			
S-LOC 10C					1220/24 551 (600-½) 1220/60 551 (600-1¼)			
ZURSO FIX MINIMUMS (DUAL VOR RECEIVERS OR DME REQUIRED)								
S-LOC 10C					1100/24 431 (500-½) 1100/40 431 (500-¾)			

HIRL all Rwy's TDZ/CL all Rwy's except 4L					
FAF to MAP 5 NM					
Knots	60	90	120	150	180
Min:Sec	5:00	3:20	2:30	2:00	1:40