


RNAV (RNP) Z RWY 35L

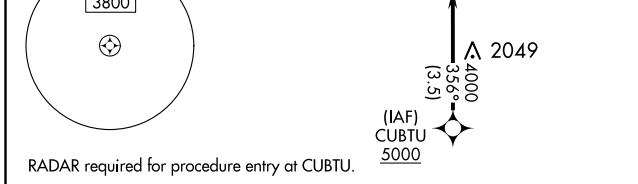
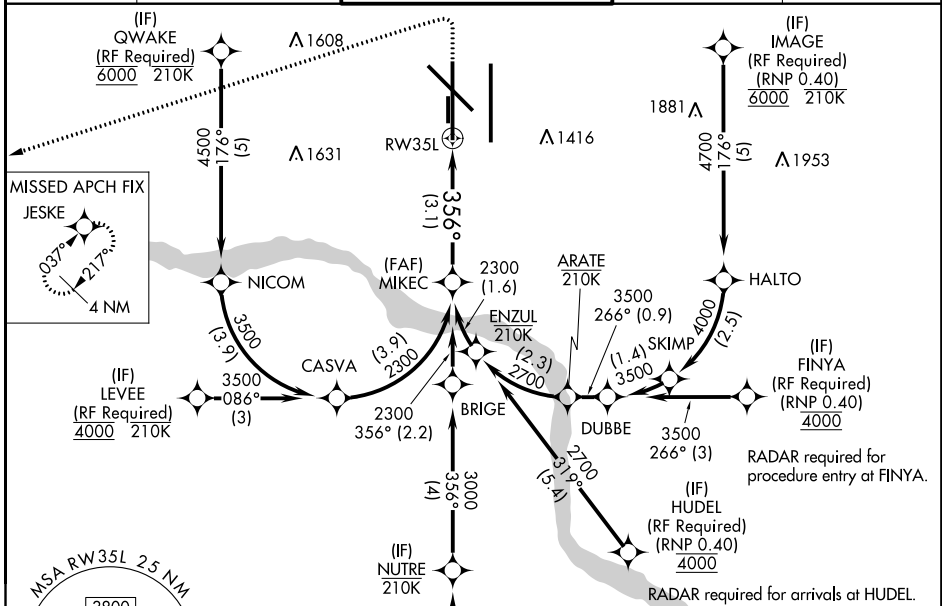
WILL ROGERS WORLD (OKC)

APP CRS 356°	Rwy Idg 9800
	TDZE 1276
	Apt Elev 1296

ASR For uncompensated Baro-VNAV systems, procedure NA below -12°C (11°F) or above 54°C (130°F). GPS required. Simultaneous approach authorized with Rwy 35R. Use of FD or AP providing RNAV track guidance required during simultaneous operations. For inop ALS, increase RNP 0.30 all Cats visibility to 1/4 SM.

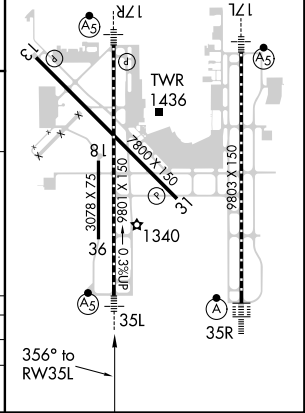
MALSR  MISSED APPROACH: Climb to 2000 then climbing left turn to 3000 direct JESKE and hold.

D-ATIS 125.85	OKE CITY APP CON 124.6 266.8	ROGERS TOWER 119.35 269.45	GND CON 121.9 348.6	CLNC DEL 124.35
-------------------------	--	--------------------------------------	-------------------------------	---------------------------



ELEV 1296 **D** TDZE 1276

REIL Rwys 13 and 31
TDZ/CL Rwy 35R
MIRL Rwy 13-31
HIRL Rwys 17L-35R and 17R-35L



CATEGORY	A	B	C	D
RNP 0.30 DA		1646/38	370 (400-3/4)	

AUTHORIZATION REQUIRED

SC-1, 30 JAN 2020 to 27 FEB 2020

SC-1, 30 JAN 2020 to 27 FEB 2020