

# RNAV (GPS) Y RWY 17R

WILL ROGERS WORLD (OKC)

WAAS CH <b>50102</b> <b>W17A</b>	APP CRS <b>176°</b>	Rwy Idg TDZE <b>1282</b> Apt Elev <b>1296</b>	<b>9800</b>
--	------------------------	---	-------------

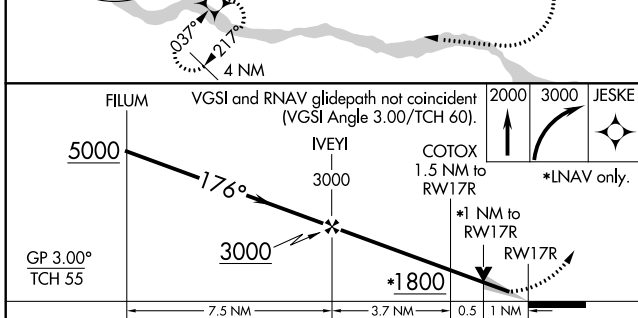
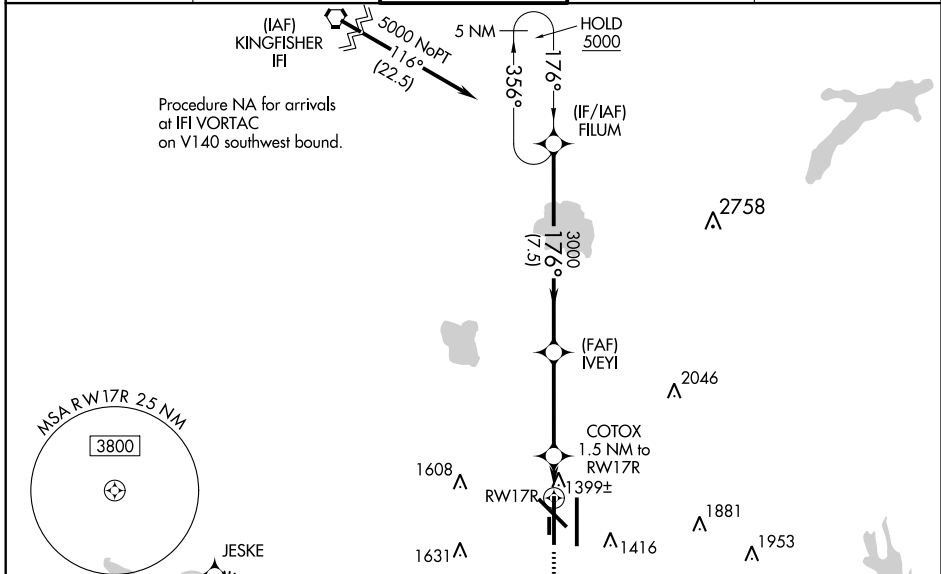
RNP APCH.

For uncompensated Baro-VNAV systems, LNAV/VNAV NA below -13°C or above 54°C. For inop ALS, increase LPV Cat E visibility to RVR 4000, and increase LNAV/VNAV all Cats visibility to RVR 4500. Increase LNAV Cats C/D/E visibility to RVR 5500. Simultaneous approach authorized. LNAV procedure NA during simultaneous operations. Use of FD or AP required during simultaneous operations.  
**\*\* RVR 1800 authorized with use of FD or AP or HUD to DA.**

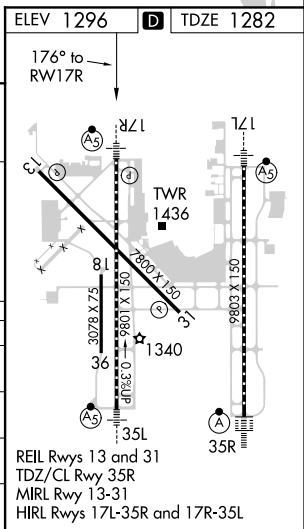
MALSRS

MISSED APPROACH: Climb to 2000 then climbing right turn to 3000 direct JESKE and hold.

D-ATIS <b>125.85</b>	OKE CITY APP CON <b>124.6 266.8</b>	ROGERS TOWER <b>119.35 269.45</b>	GND CON <b>121.9 348.6</b>	CLNC DEL <b>124.35</b>
-------------------------	--	--------------------------------------	-------------------------------	---------------------------



CATEGORY	A	B	C	D	E
LPV DA **		1482/24	200 (200-½)		
LNAV/VNAV DA		1589/24	307 (300-½)		
LNAV MDA	1660/24	378 (400-½)	1660/35	378 (400-¾)	
CIRCLING	1740-1 444 (500-1)	1760-1 464 (500-1)	1960-1¾ 664 (700-1¾)	2000-2¼ 704 (800-2¼)	2240-3 944 (1000-3)



SC-1, 05 DEC 2019 to 02 JAN 2020

SC-1, 05 DEC 2019 to 02 JAN 2020