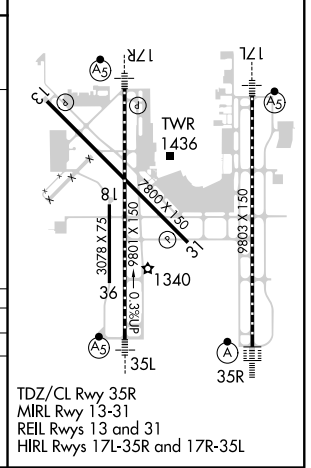
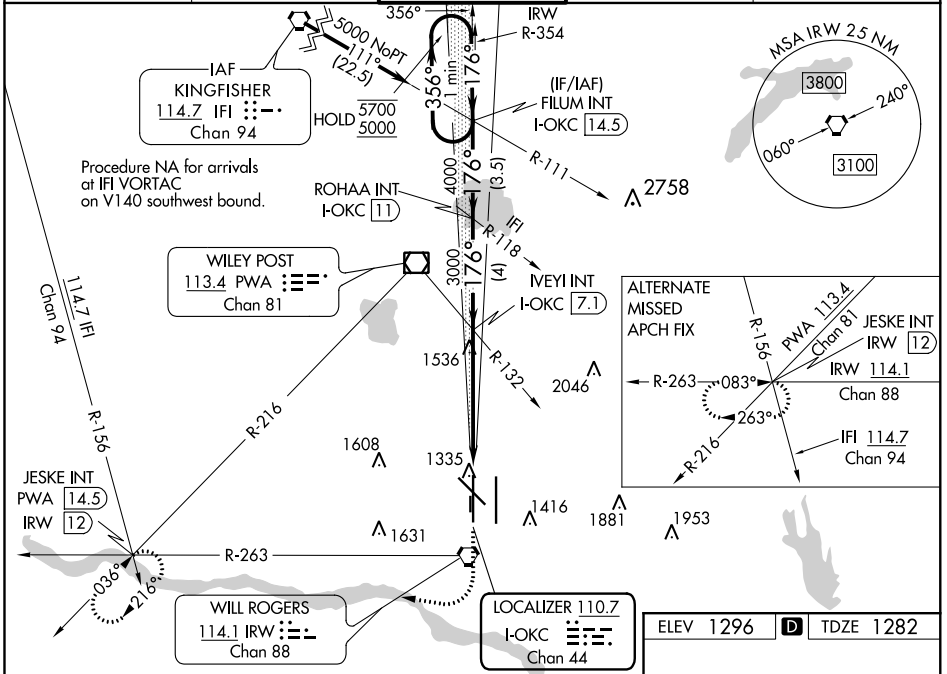


LOC/DME I-OKC 110.7 Chan 44	APP CRS 176°	Rwy Idg 9800 TDZE 1282 Apt Elev 1296
--	------------------------	---

ILS RWY 17R (SA CAT II)

WILL ROGERS WORLD (OKC)

Simultaneous approach authorized. Reduced Lighting: requires specific OPSPEC, MSPEC, or LOA approval and use of autoland or HUD to touchdown. ASR		MALSRL	MISSED APPROACH: Climb to 2000 then climbing right turn to 3000 on heading 311° and on PWA VOR/DME R-216 to JESKE INT/PWA 14.5 DME and hold.	
D-ATIS 125.85	OKE CITY APP CON 124.6 266.8	ROGERS TOWER 119.35 269.45	GND CON 121.9 348.6	CLNC DEL 124.35



ELEV 1296	D	TDZE 1282		
One Minute Holding Pattern	VGSi and ILS glidepaths not coincident (VGSi Angle 3.00/TCH 60).	2000 3000 hdg 311°		
FILUM INT I-OKC 14.5	ROHAA INT I-OKC 11	IVEYI INT I-OKC 7.1		
5700 ← 356°	176° → 5000	3000		
GS 3.00° TCH 55	Use I-OKC DME when on localizer course.	3000		
CATEGORY	A	B	C	D
5-ILS 17R	RA 102/12 100 DA 1382			
SA CATEGORY II ILS - SPECIAL AIRCREW & AIRCRAFT CERTIFICATION REQUIRED				

SC-1, 05 DEC 2019 to 02 JAN 2020

SC-1, 05 DEC 2019 to 02 JAN 2020