

WAAS CH <b>69528</b> <b>W09A</b>	APP CRS <b>089°</b>	Rwy Idg <b>6006</b> TDZE <b>292</b> Apt Elev <b>302</b>
--	------------------------	---

# RNAV (GPS) RWY 9

OGDENSBURG INTL (OGS)

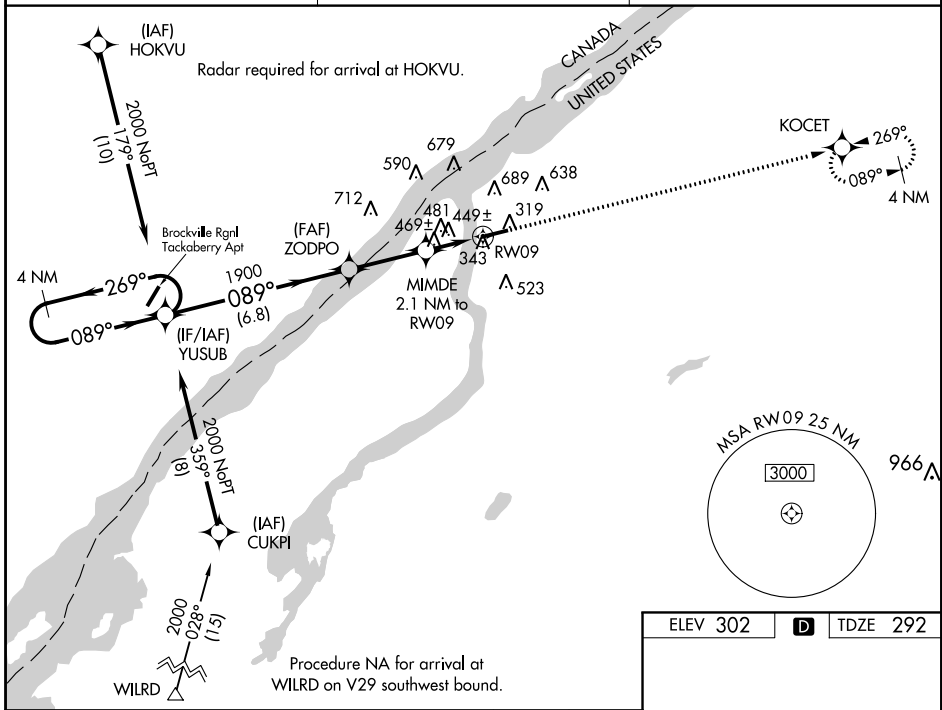
**V** Baro-VNAV NA when using Massena altimeter setting. For uncompensated Baro-VNAV systems, LNAV/VNAV NA below -15°C (5°F) or above 42°C (107°F). DME/DME RNP-0.3 NA. Rwy 9 helicopter visibility reduction below 3/4 SM NA. When local altimeter setting not received, use Massena altimeter setting; increase LPV DA to 623 feet, LNAV/VNAV DA to 848 feet and all visibilities 3/8 SM; increase all MDAs 100 feet and LNAV/Circling Cat C/D visibility 1/2 SM.

**NA** MISSED APPROACH: Climb to 2000 direct KOCET and hold.

AWOS-3  
**118.525**

BOSTON CENTER  
**135.25 377.1**

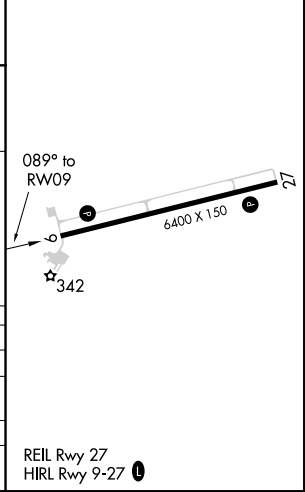
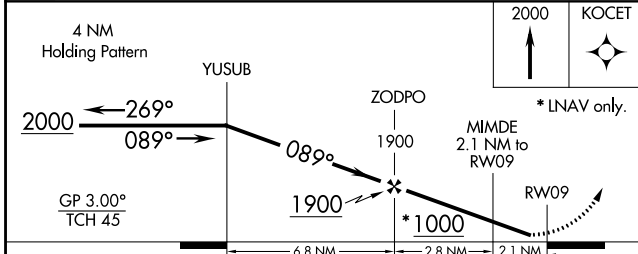
UNICOM  
**122.8 (CTAF)**



NE-2, 04 JAN 2018 to 01 FEB 2018

NE-2, 04 JAN 2018 to 01 FEB 2018

ELEV 302	<b>D</b>	TDZE 292
----------	----------	----------



CATEGORY	A	B	C	D
LPV DA		542-1	250 (300-1)	
LNAV/DA VNAV		767-1 5/8	475 (500-1 5/8)	
LNAV MDA	740-1	448 (500-1)	740-1 3/8	448 (500-1 3/8)
<b>C</b> CIRCLING	760-1 458 (500-1)	1000-1 698 (700-1)	1000-2 698 (700-2)	1000-2 1/4 698 (700-2 1/4)

REIL Rwy 27  
HIRL Rwy 9-27