

WAAS CH <b>86318</b> W29A	APP CRS <b>293°</b>	Rwy Idg 6200 TDZE 2980 Apt Elev 3004
---------------------------------	------------------------	---

AL-5689 (FAA)

# RNAV (GPS) RWY 29

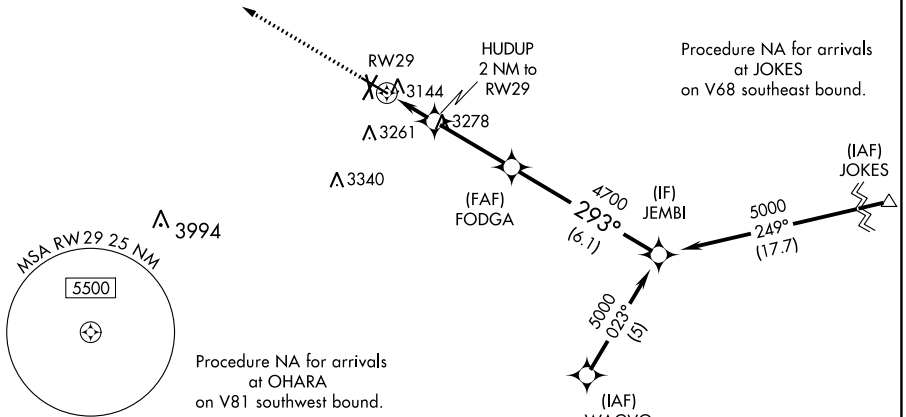
ODESSA-SCHLEMEYER FIELD (ODO)

RNP APCH.

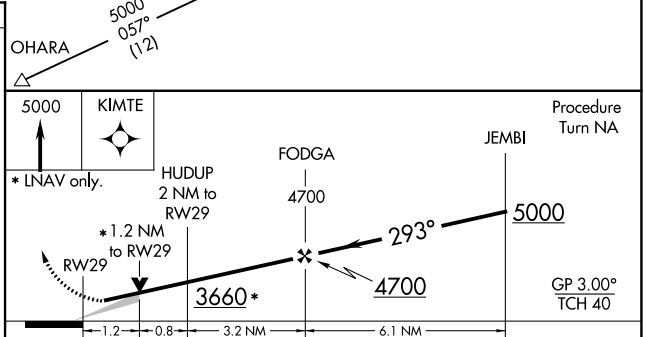
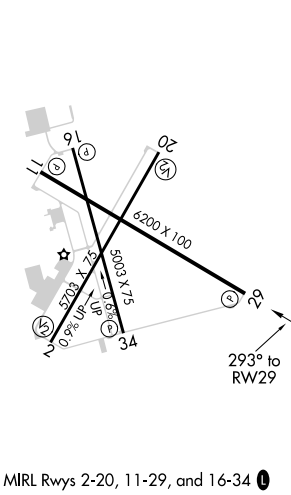
**▼** Baro-VNAV NA when using Midland Intl Air and Space Port altimeter setting. For uncompensated Baro-VNAV systems, LNAV/VNAV NA below -21°C or above 43°C. Circling NA south of Rws 2 and 34. When local altimeter setting not received use Midland Intl Air and Space Port altimeter setting and increase all DAs 41 feet and all MDAs 60 feet and increase LNAV Cats C and D visibility ½ mile. VDP NA with Midland Intl Air and Space Port altimeter setting.

**MISSED APPROACH:**  
Climb to 5000 direct KIMTE and hold.

ASOS <b>119.275</b>	MIDLAND APP CON ★ <b>124.6 256.875</b>	CINC DEL <b>121.7</b>	UNICOM <b>123.0</b> (CTAF) <b>📻</b>
------------------------	---	--------------------------	--



ELEV 3004	TDZE 2980
-----------	-----------



CATEGORY	A	B	C	D
LPV DA	3180-¾ 200 (200-¾)			
LNAV/VNAV DA	3414-1½ 434 (500-1½)			
LNAV MDA	3400-1	420 (500-1)	3400-1¼ 420 (500-1¼)	
CIRCLING	3460-1	456 (500-1)	3460-1½ 456 (500-1½)	3600-2 596 (600-2)

SC-3, 17 JUN 2021 to 15 JUL 2021

SC-3, 17 JUN 2021 to 15 JUL 2021