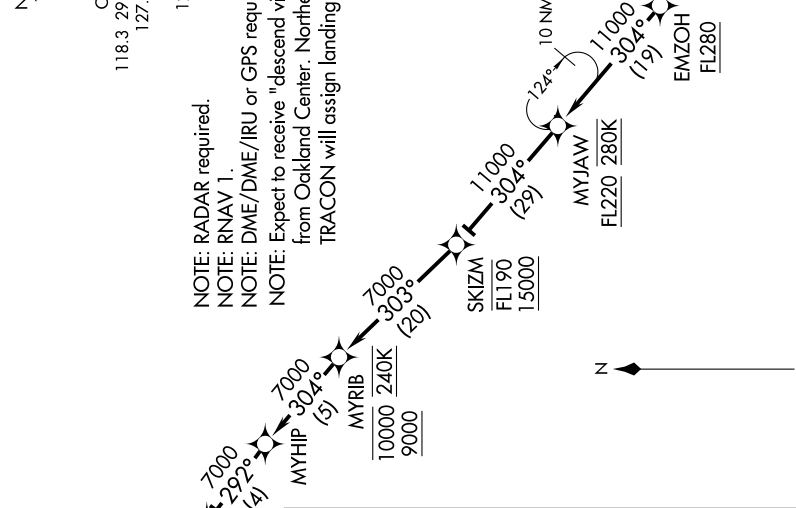


SW-2, 02 JAN 2020 to 30 JAN 2020

OAKLAND CENTER
133.7 285.4
NORCAL APP CON
124.525 348.675
D-AITIS
133.775

OAKLAND TOWER
118.3 291.65 (Rwys 28L/R)
127.2 256.9 (Rwy 30)
GND CON
121.9 (Rwys 28L/R)
121.75 (Rwy 30)

NOTE: RADAR required.
NOTE: RNAV 1.
NOTE: DME/DME/IRU or GPS required.
NOTE: Expect to receive "descend via" clearance from Oakland Center. Northern California TRACON will assign landing runway.



ARRIVAL ROUTE DESCRIPTION
RGOOD TRANSITION (RGOOD.EMZOH3)

From EMZOH on track 304° to cross MYJAW at or above FL220 and at 280K, then on track 304° to cross SKIZM between 15000 and FL190.

LANDING RUNWAYS 28L/R: From SKIZM on track 303° to cross MYRIB between 9000 and 10000 and at 240K, then on track 304° to MYHIP, then on track 292° to cross MYNEE at 7000, then on track 292° to cross MYSHN at or above 6200, then on track 292° to cross CYMBL at 5300. Expect assigned instrument approach procedure.

LANDING RUNWAY 30: From SKIZM on track 303° to cross MYRIB between 9000 and 10000 and at 240K, then on track 304° to MYHIP, then on track 292° to cross MYNEE at 7000, then on track 292° to cross MYSHN at or above 6200, then on track 264° to cross FIXME at or above 5200, then on track 264° to cross MYCAF at or above 5000, then on track 264° to cross BIGPD at or above 4500, then on track 264° to cross FRNNY at or above 4100. Expect assigned instrument approach procedure.

NOTE: Chart not to scale.

SW-2, 02 JAN 2020 to 30 JAN 2020