

APP CRS	Rwy Idg	2909
314°	TDZE	271
	Apt Elev	272

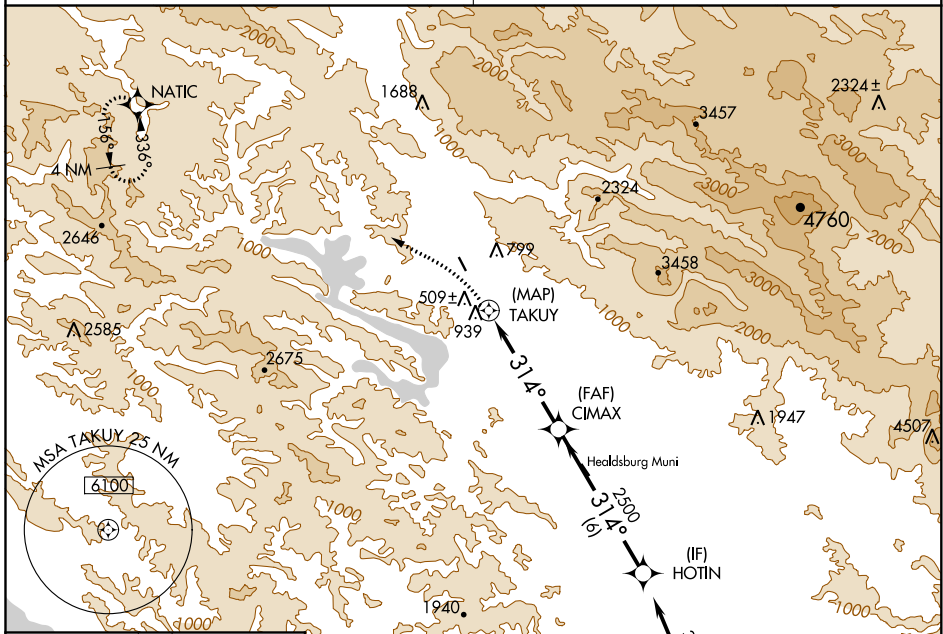
RNAV (GPS) RWY 32

CLOVERDALE MUNI (O60)

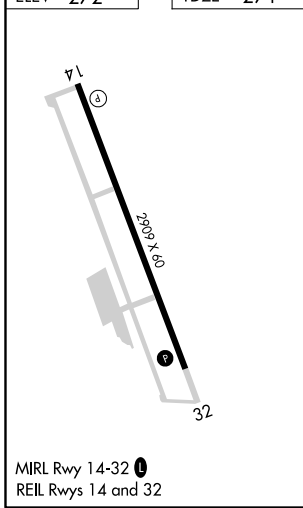
▽ Use Santa Rosa/Charles M Schulz-Sonoma County altimeter setting; when not received procedure NA.
△ NA Procedure NA at night. Circling NA east of Rwy 14-32 GPS or RNP-0.3 required. DME/DME RNP-0.3 NA.

MISSED APPROACH: Climbing left turn to 6000 direct NATIC WP and hold.

OAKLAND CENTER 127.8 353.5	UNICOM 122.8 (CTAF) 0
--------------------------------------	---------------------------------

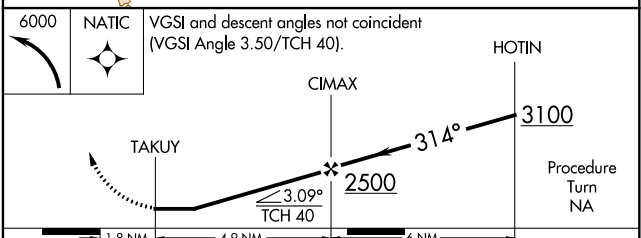


ELEV 272	TDZE 271
----------	----------



MIRL Rwy 14-32
 REIL Rwy 14 and 32

Procedure NA for arrival at STS VOR/DME via V494 southbound.



CATEGORY	A	B	C	D
LNAV MDA	1440-2	1169 (1200-2)	1440-3 1169 (1200-3)	NA
CIRCLING	1440-2	1168 (1200-2)	1640-3 1368 (1400-3)	NA

SW-2, 20 MAY 2021 to 17 JUN 2021

SW-2, 20 MAY 2021 to 17 JUN 2021